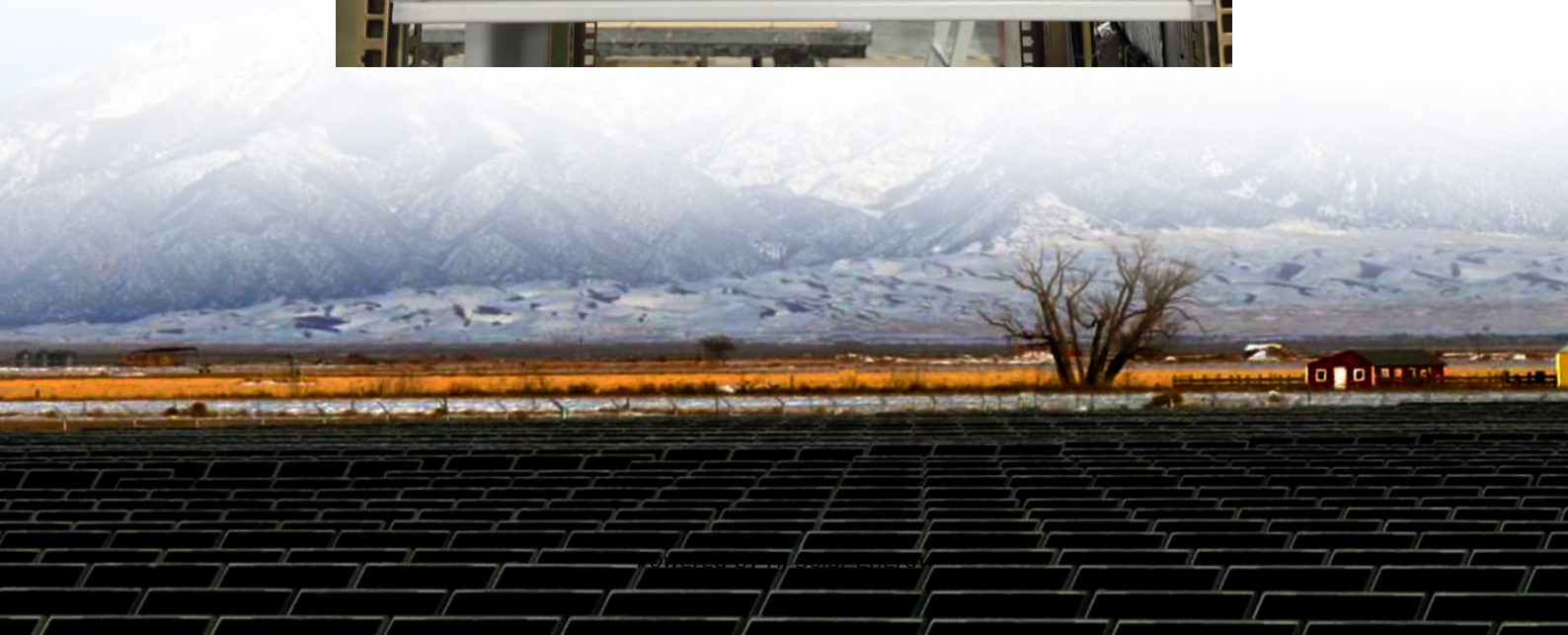
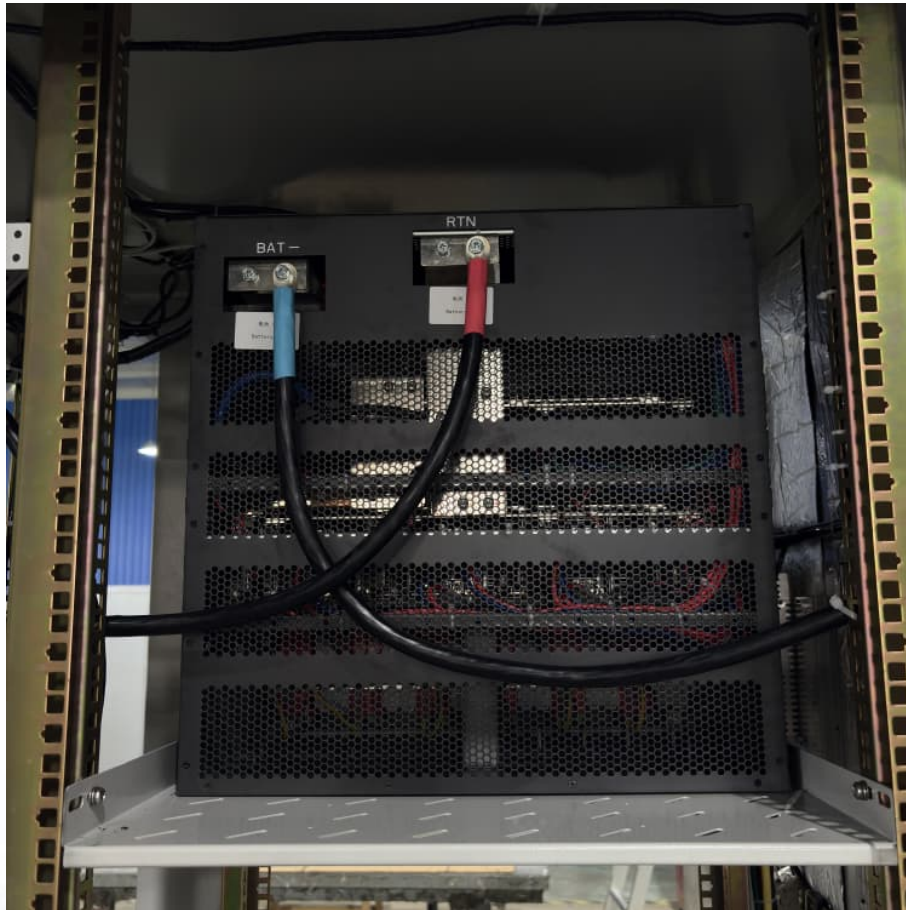


How many kwh does my solar panel produce





Overview

How many kWh does a solar panel produce a month?

Depending on its wattage, an average solar panel may produce anywhere from 25 kWh to 60 kWh per month. To calculate a solar panel's monthly production in kilowatt-hours, multiply its expected daily output by the number of days in a month. Statistically speaking, the average number of days per month is 30.4.

How many Watts Does a solar panel produce?

Panel wattage is related to potential output over time — e.g., a 400-watt solar panel could potentially generate 400 watt-hours of power in one hour of direct sunlight. 1,000 watts (W) equals one kilowatt (kW), just as 1,000 watt-hours (Wh) equals one kilowatt-hour (kWh). How much energy does a solar panel produce?

.

How much power does a solar system produce?

Solar panels are tested and rated their power output under standard test conditions (which I'm gonna discuss in a bit in detail). These conditions include 1000 watt per meter square of sunlight intensity (1kw/m²) So we use peak sun hours as a baseline when estimating how much power output we can expect from a solar system in a specific location.

How much energy does a solar panel system need?

A typical American household would need around 10,000 kWh per year. A 20 to 30 panel system should generate enough power to cover annual energy needs. But, just as every home and family is different, the same is true for the solar panel systems that will accommodate their habits and needs.

How many solar panels per day?



Find your local peak sun hours (consult a solar map or use an estimate). For example, if you use 30 kWh per day, have 4.5 sun hours and plan to install 400 W panels: $400 \text{ W} \times 4.5 = 1,800 \text{ Wh}$ (1.8 kWh) per panel per day. $30 \text{ kWh} \div 1.8 \text{ kWh} \approx 17$ panels.

What is solar panel output?

Solar panel output, fundamentally, represents the quantity of electrical energy that solar panels can produce over a given period. This output is a critical measure of a solar panel system's efficiency and its capacity to convert sunlight into usable electricity.



How many kwh does my solar panel produce

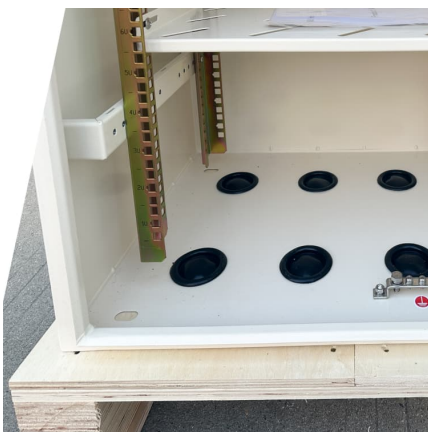


[Solar Panel Output Calculator , Get Maximum Power ...](#)

This specific calculator and accompanying guide can help users translate solar panel specifications and local conditions into expected kWh production, offering a hands-on approach to understanding solar output.

[How Many kWh Does A Solar Panel Produce Per Day?](#)

To illustrate how many kWh different solar panel sizes produce per day, we have calculated the kWh output for locations that get 4, 5, or 6 peak sun hours. Here are all the results, gathered in ...



[How Much Energy Does A Solar Panel Produce?](#)

On average, a solar panel can output about 400 watts of power under direct sunlight, and produce about 2 kilowatt-hours (kWh) of energy per day. Most homes install around 18 solar panels, ...

[How many kWh does a solar panel produce?](#)

Want to learn how much power a solar panel produces? We'll break down what you need to know and how to calculate your solar panel's energy production.



Solar Panel Output Calculator , Get Maximum Power Output

This specific calculator and accompanying guide can help users translate solar panel specifications and local conditions into expected kWh production, offering a hands-on ...



How Much Energy Does A Solar Panel Produce? -

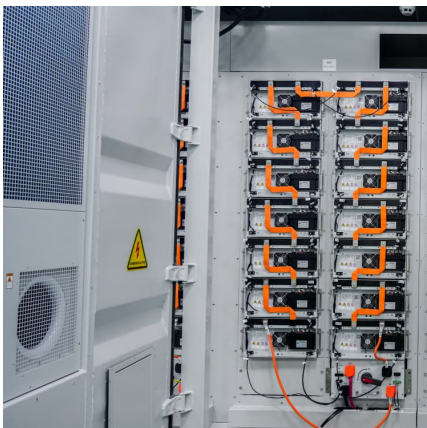
...

While solar panel systems start at 1 KW and produce between 750 and 850 Kilowatt hour (KwH) annually, larger homes and bigger households typically want to be on the higher end.



Solar Panel Output Calculator

Use this solar panel output calculator to find out the total output, production, or power generation from your solar panels per day, month, or in year. Also, I'm gonna share ...





[How Much Energy Does A Solar Panel Produce?](#)

A 400-watt panel can generate roughly 1.6-2.5 kWh of energy per day, depending on local sunlight. To cover the average U.S. household's 900 kWh/month consumption, you typically need 12-18 panels. Output depends on ...



[How Many kWh Does a Solar Panel Produce Per Day?](#)

Calculate how many kWh a solar panel produces daily with our easy formula + chart. Learn how panel size and peak sun hours impact energy output in your state.

Solar Panels kWh Calculator , Calculate Energy Production

Calculate how much electricity (kWh) your solar panels will produce based on system size, location, and panel specifications. Estimate daily, monthly and annual solar energy production.



[Solar Panel Output: How Much Power Can You Expect?](#)

Learn how much power a solar panel produces and what impacts output, from panel type to sunlight exposure, to help you plan your solar investment.



How Much Energy Does A Solar Panel Produce?

A 400-watt panel can generate roughly 1.6-2.5 kWh of energy per day, depending on local sunlight. To cover the average U.S. household's 900 kWh/month ...



How many kWh does a solar panel produce?

Want to learn how much power a solar panel produces? We'll break down what you need to know and how to calculate your solar panel's energy production.

How Much Energy Does A Solar Panel Produce? - Forbes Home

While solar panel systems start at 1 KW and produce between 750 and 850 Kilowatt hour (KwH) annually, larger homes and bigger households typically want to be on the higher end.





[How Much Energy Does A Solar Panel Produce?](#)

On average, a solar panel can output about 400 watts of power under direct sunlight, and produce about 2 kilowatt-hours (kWh) of energy per day. Most homes install around 18 solar panels, producing an average of 36 kWh of solar ...

Contact Us

For catalog requests, pricing, or partnerships, please visit:
<https://www.conrad.edu.pl>