

How much outdoor energy storage space is required for a car





Overview

According to Garage Chief, the standard for your average midsize sedan is 15 to 16 feet. By vehicle class, average lengths break down as follows: Judging by the size of the average vehicle type, you'll likely need a self-storage unit that's at the very least 20 feet.

According to Garage Chief, the standard for your average midsize sedan is 15 to 16 feet. By vehicle class, average lengths break down as follows: Judging by the size of the average vehicle type, you'll likely need a self-storage unit that's at the very least 20 feet.

The minimum size needed for storing a compact car is a 10x15 storage unit. Larger unit sizes, such as 10x20, 10x25, and 10x30, are perfect for medium to large vehicle's like sedans, pickup trucks, and vans. In order to determine what car storage unit size is ideal for you, we recommend physically.

You have four options for siting ESS in a residential setting: an enclosed utility closet, basement, storage or utility space within a dwelling unit with finished or noncombustible walls or ceilings; inside a garage or accessory structure; on the exterior wall of the home; and on ground mounts.

Our experience suggests that compact cars typically fit comfortably into a 10x15 unit, which affords enough room for maintenance space around the vehicle. For larger sedans, SUVs, or crossovers, a 10x20 unit is often recommended. These sizes can accommodate most vehicles while providing some extra.

According to Garage Chief, the standard for your average midsize sedan is 15 to 16 feet. By vehicle class, average lengths break down as follows: Judging by the size of the average vehicle type, you'll likely need a self-storage unit that's at the very least 20 feet. So, the types of storage units.

How much energy storage capacity does a car have?

1. A car typically has energy storage capacities that vary based on its type and intended use.
2. Most electric vehicles (EVs) come equipped with battery



systems ranging from 20 kWh to over 100 kWh, providing sufficient energy for distances between.

In this blog, we will walk through the practical stuff, from sizes and costs to simple prep steps, and since Detroit has around 62 car storage facilities, which can make it a little confusing to choose from, we will show how Schaefer Lyndon can make choosing easy. There are a few common reasons. What size car storage unit do I Need?

Larger unit sizes, such as 10x20, 10x25, and 10x30, are perfect for medium to large vehicle's like sedans, pickup trucks, and vans. In order to determine what car storage unit size is ideal for you, we recommend physically measuring the length and width of your car to get a better idea.

Does extra space storage offer secure car storage?

Extra Space Storage offers secure car storage with select drive-up units. Be sure to measure your vehicle to help you decide what size storage unit will work for your vehicle. Browse the available unit sizes at a storage facility near you to determine your vehicle storage options!.

What size storage unit do I Need?

The minimum size needed for storing a compact car is a 10x15 storage unit. Larger unit sizes, such as 10x20, 10x25, and 10x30, are perfect for medium to large vehicle's like sedans, pickup trucks, and vans.

Does your car have enough storage space?

We've come a long way from the days when the only storage room in the average car was the glove box and trunk. But even though today's vehicles come with more holders and compartments, you still may not have enough space for your gear, and some vehicles have more room than others.

Does extra space storage have outdoor parking spaces?

Extra Space Storage has outdoor parking spaces in sizes like 10x15 to accommodate compact cars, or 10x20 options for larger automobiles. Need an indoor storage unit for your truck or SUV?

Our 10x20 storage units can accommodate small trucks and SUVs. For larger trucks and SUVs, we recommend renting one of our 10x30 SUV storage units.



Can a compact car fit in a 10x15 car storage unit?

Compact cars can fit our 10x15 car storage units, while sedans and crossovers can typically fit in our 10x20 car storage units. Need to rent covered car storage?

Help protect your car from the elements with one of our covered 10x15 parking spaces. Trying to find outdoor car storage?



How much outdoor energy storage space is required for a car

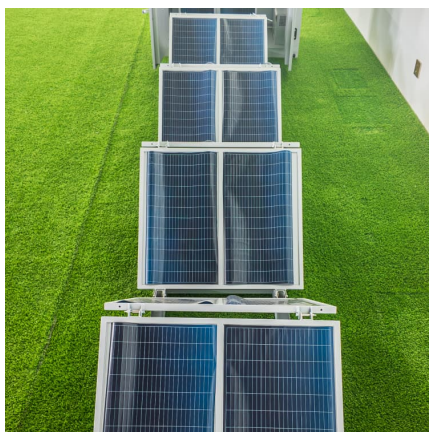


[Storing a Car Outside: How to Do It the Right Way](#)

If you don't have a driveway or unpaved lot to store your vehicle on, consider renting a car storage space through a storage marketplace like ...

[Vehicle Storage: What You Need to Know for Long ...](#)

Vehicle storage includes more than just your car. It's also common for people to use self storage for their motorcycles, boats, ATVs, and ...



[Spacious Parking: 4-Car Garage Square Footage Explained](#)

Learn about 4-car garage square footage and why you need a spacious parking area. Discover the benefits of ample space for vehicle storage and easy maneuvering.

What are the Essential Site Requirements for Battery Energy Storage

Battery Energy Storage Systems represent the future of grid stability and energy efficiency. However, their successful implementation



depends on the careful planning of ...



[Storing a Car Outside: How to Do It the Right Way](#)

If you don't have a driveway or unpaved lot to store your vehicle on, consider renting a car storage space through a storage marketplace like Neighbor. And if you can't bring ...



[Car Storage: Rent Cheap Auto Storage Near You](#)

Find Car Storage Near You Need secure car storage for a month or longer? Whether you're looking for short or long-term vehicle storage, Extra Space ...



Practical Considerations for Siting Utility-Scale Battery Projects

Getting cost-effective use out of a battery storage system isn't just a matter of plug-and-play. Where and how you site a battery can make a big difference.





[Ventilation for Acceptable Indoor Air Quality](#)

For example, the current standard specifies outdoor air requirements in the "breathing zone," which are very difficult to actually measure and therefore to enforce. It also requires one to ...



[Car Storage Unit Size Calculator: Find Your Vehicle ...](#)

Wondering what size storage unit you'll need for your car or vehicle? Our vehicle storage unit size calculator can help you find the right size!

[Car Storage: The Ultimate Guide to Protect Your ...](#)

The cost of renting a car storage unit varies depending on several factors, including the size of the unit, the type of storage (indoor or ...



How Much Space Do I Need ?

See also our other pages in the SpaceOut Guidelines section, to find out more about using SpaceOut Services. See the Storage Space Calculator page to help decide what your storage ...

Storage Units Big Enough for a Car: Secure



Vehicle Solutions ...

We'll guide you through understanding storage unit sizes, the distinctions between indoor and outdoor options, and special measures for safeguarding classic and luxury ...

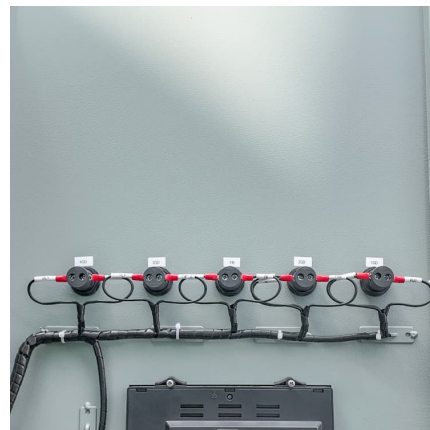


What Size Storage Unit for a Car is Best? , Price Self ...

If you've considered storing your vehicle elsewhere, you're probably wondering what size storage unit do I need for a car? Below, we'll answer that question ...

[Battery Storage Land Lease Requirements & Rates 2024](#)

Curious about BESS land lease requirements? Discover key insights on site selection, lease terms, and incentives to enhance your BESS ...



[How much space does a car wash need? - BusinessDojo](#)

How much space is needed for equipment storage in a car wash? Equipment storage in a car wash typically requires 100 to 200 square feet depending on the size and type ...



Parking Area Calculator [Space, Lot Size, Layout, Ratio]

The Parking Area Calculator is very helpful in planning the space, ratio, lot size of car parking. Whether you need to assess parking size for 20, 50 cars or 1 acre parking lot ...



Vehicle Storage Units , Store Space Self Storage

At many Store Space Self Storage facilities, guests can rent gated, outdoor vehicle parking spaces in a variety of lengths to store vehicles large and small. In some circumstances, drive ...

Standard Single-Car Garage: Square Footage Explained

The average size of a single-car garage varies between 240 and 384 square feet, with the standard size being 12 feet wide and 20 feet long (12x20). However, the size can ...



Standard Garage Sizes for 1, 2, 3, or 4 Cars (with Chart)

On the large size, a single car garage measuring 24? by 16? by 8? will provide space for one foot deep shelves on both sides and 10 to 12 feet of ...



[Standard Garage Sizes for 1, 2, 3, or 4 Cars \(w/ ...](#)

A fairly common form of multi-car garage, families often use one side for living or storage space when they only have one vehicle. These ...



[Outdoor Energy Storage Systems , Cloudenergy ...](#)

Discover Cloudenergy's reliable and efficient outdoor energy storage systems for your solar power needs. Experience advanced solutions that cater to a variety ...

[Standard Garage Sizes for 1, 2, 3, or 4 Cars \(with Chart\)](#)

On the large size, a single car garage measuring 24' by 16' by 8' will provide space for one foot deep shelves on both sides and 10 to 12 feet of work and living space ...





[New Residential Energy Storage Code Requirements](#)

In the world of outdoor energy storage vehicles, every cubic inch counts - whether you're powering a glacier research station or keeping the beer cold at Burning Man.

[Vehicle Storage , Car, Motorcycle, RV, Boat Storage](#)

Indoor Vehicle Storage Units If shielding your vehicle from outdoor elements is a priority for you, indoor vehicle storage may be the answer. Indoor storage units ...



Contact Us

For catalog requests, pricing, or partnerships, please visit:
<https://www.conrad.edu.pl>