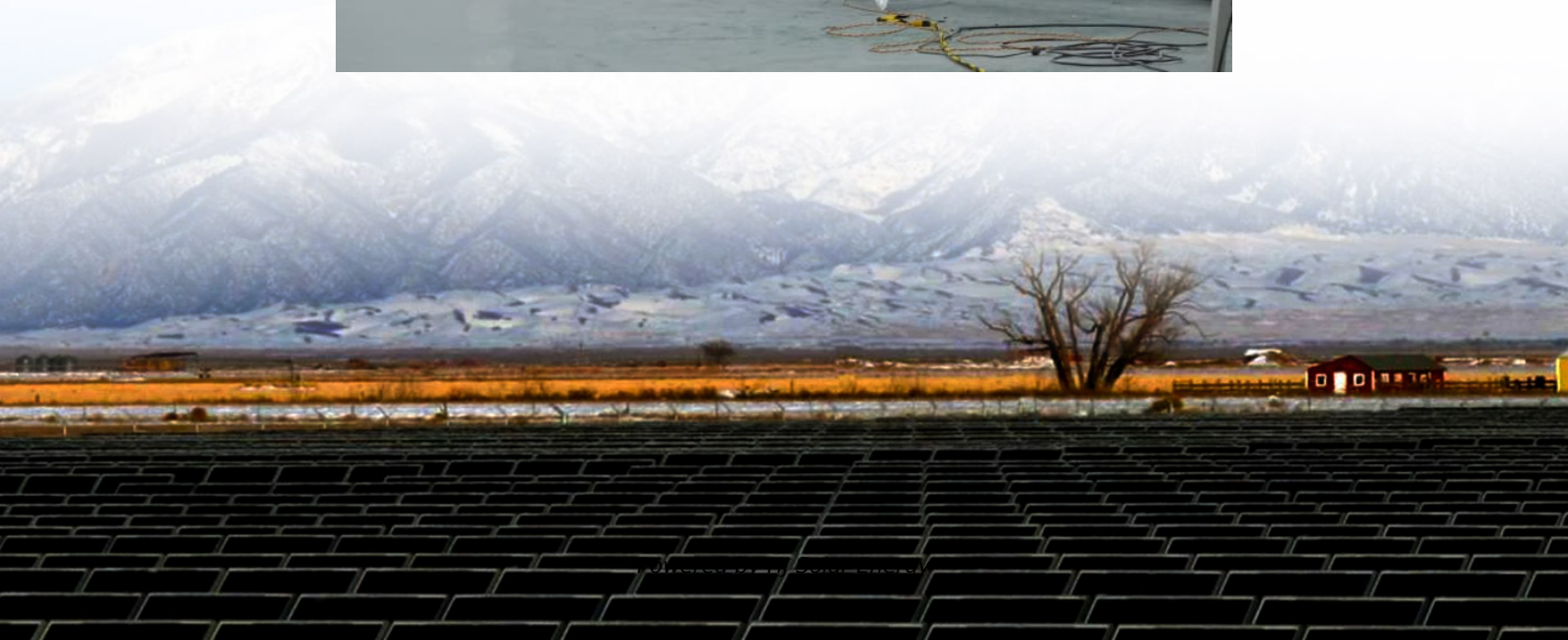


# How to calculate kwh for solar system





## Overview

---

The daily kWh generation of a solar panel can be calculated using the following formula: The power rating of the solar panel in watts  $\times$ — Average hours of direct sunlight = Daily watt-hours. Consider a solar panel with a power output of 300 watts and six hours of direct sunlight per.

The daily kWh generation of a solar panel can be calculated using the following formula: The power rating of the solar panel in watts  $\times$ — Average hours of direct sunlight = Daily watt-hours. Consider a solar panel with a power output of 300 watts and six hours of direct sunlight per.

Not because it's fairly simple - and we'll show you how to do it yourself with the help of our simple calculator - but because you need to know how to calculate solar panels output to estimate how many kWh per day can a solar panel produce. To calculate solar panel output per day (in kWh), we need.

Once you know the kWh desired, use the calculator here to determine the kilowatts (kW) of solar power you will need to generate the kWh for your location.  
Need Help?

Need Help?

A # kW solar kit could generate # per year in &nbsp;. The NEXT STEP, now that you have an estimate for the desired kW.

Online solar calculators can give a rough estimate of how much solar you need to power your home, but you may want to perform your own sizing calculations to fine-tune your choices. Here's a step-by-step overview of the process we follow when sizing solar systems for our customers. Note: This.

Definition: This calculator estimates the energy output of a solar system based on its size, operating hours, and efficiency. Purpose: It helps solar installers, homeowners, and energy professionals estimate solar system performance. 2. How Does the Calculator Work?

The calculator uses the formula:.



To calculate the daily kWh generated by solar panels, use the following steps:  
1. Determine the Size of One Solar Panel Multiply the size of one solar panel in square meters by 1,000 to convert it to square centimeters. Example: If a solar panel is 1.6 square meters, the calculation would be  $1.6 \times 1,000 = 1,600$  square centimeters.

In this guide, we ' ll simplify the math, provide a handy formula, and break down solar panel kWh production based on size, location, and sunlight. Whether you ' re sizing a system for your home or just curious about solar potential, you ' ll walk away with clear answers. Two variables dictate how. How do you calculate kWh generated by solar panels?

To calculate the daily kWh generated by solar panels, use the following steps:  
1. Determine the Size of One Solar Panel Multiply the size of one solar panel in square meters by 1,000 to convert it to square centimeters. Example: If a solar panel is 1.6 square meters, the calculation would be  $1.6 \times 1,000 = 1,600$  square centimeters. 2.

How do you calculate solar energy per day?

To calculate solar panel output per day (in kWh), we need to check only 3 factors: Solar panel's maximum power rating. That's the wattage; we have 100W, 200W, 300W solar panels, and so on. How much solar energy do you get in your area?

That is determined by average peak solar hours.

How to calculate solar panel output?

The first factor in calculating solar panel output is the power rating. There are mainly 3 different classes of solar panels: Small solar panels: 50W and 100W panels. Standard solar panels: 200W, 250W, 300W, 350W, 500W panels. There are a lot of in-between power ratings like 265W, for example. Big solar panel system: 1kW, 4kW, 5kW, 10kW system.

How do you calculate solar panel capacity?

Multiply the number of panels by the capacity of the solar panel system. Divide the capacity by the total size of the system (number of panels  $\times$  size of one panel). Example: Consider a system with 16 panels, where each panel is approximately 1.6 square meters and rated to produce 265 watts.

How many kWh does a 400W solar panel generate per month?



In states with sunnier climates like California, Arizona, and Florida, where the average daily peak sun hours are 5.25 or more, a 400W solar panel can generate 63 kWh or more of electricity per month. Also See: [How to Calculate Solar Panel KWp \(KWh Vs. KWp + Meanings\)](#) [How many kWh Per Year do Solar Panels Generate?](#)

.

How many kWh do solar panels generate a year?

We will also calculate how many kWh per year do solar panels generate and how much does that save you on electricity. Example: 300W solar panels in San Francisco, California, get an average of 5.4 peak sun hours per day. That means it will produce  $0.3\text{kW} \times 5.4\text{h/day} \times 0.75 = 1.215$  kWh per day. That's about 444 kWh per year.



## How to calculate kwh for solar system

---



### [How to Calculate Daily kWh from Your Solar Panels - ...](#)

Calculate how many kWh a solar panel produces daily with our easy formula + chart. Learn how panel size and peak sun hours impact energy output in your state.

### [Solar Panel Output Calculator , Get Maximum Power ...](#)

Use Solar Panel Output Calculator to find out the total output, production, or power generation from your solar panels per day, month, or in year.



### [Solar System Calculator 2025 , Online Solar Calculator](#)

Design Online Your Solar System. Calculate your daily Solar needs and get recommendations for panels, batteries & inverter--all in one place!

### [How to Calculate your Solar Energy Needs in kWh](#)

However, to build an efficient solar energy system, you need to determine how much power you consume daily and how many solar panels



you need. This guide will walk you through ...

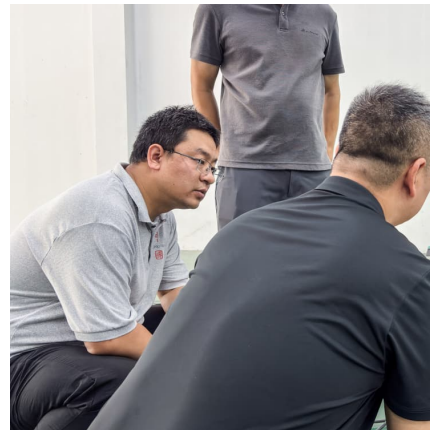


### **Solar Panels kWh Calculator , Calculate Energy Production**

Calculate how much electricity (kWh) your solar panels will produce based on system size, location, and panel specifications. Estimate daily, monthly and annual solar energy production.

### **How to Calculate Daily kWh from Your Solar Panels - EcoVault**

Calculate how many kWh a solar panel produces daily with our easy formula + chart. Learn how panel size and peak sun hours impact energy output in your state.



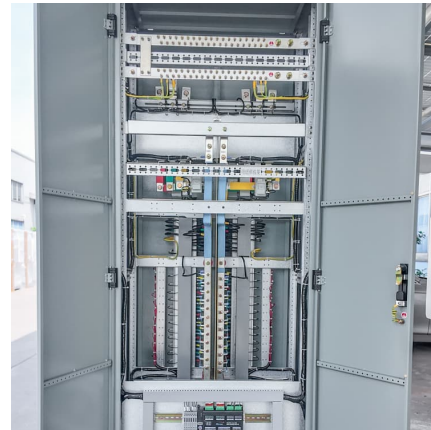
### **Solar Panel kWh Calculator: kWh Production Per Day, Month, Year**

Based on this solar panel output equation, we will explain how you can calculate how many kWh per day your solar panel will generate. We will also calculate how many kWh per year do solar ...



### Solar Panel Output Calculator , Get Maximum Power Output

Use Solar Panel Output Calculator to find out the total output, production, or power generation from your solar panels per day, month, or in year.



### Calculate How Much Solar Do I Need?

On our Calculate How Much Solar page, you will learn how much solar power in kilo-watts or kW is needed to generate the kilo-watt hours or kWh of energy used at your property.

### Solar System kWh Calculator

Definition: This calculator estimates the energy output of a solar system based on its size, operating hours, and efficiency. Purpose: It helps solar installers, homeowners, and energy ...



## Contact Us

---

For catalog requests, pricing, or partnerships, please visit:  
<https://www.conrad.edu.pl>