

How to check samsung solar remote battery level





Overview

To check the battery level, press the Home button, navigate to the settings menu on your TV, and select “Battery Status”. To check the battery level of your Samsung solar remote, press the voice button on the remote and say “Remote battery”. Your TV should display the percentage level.

To check the battery level, press the Home button, navigate to the settings menu on your TV, and select “Battery Status”. To check the battery level of your Samsung solar remote, press the voice button on the remote and say “Remote battery”. Your TV should display the percentage level.

The quickest way to check the battery level of your Samsung SolarCell Remote is by pressing the voice button on the remote and saying “Remote battery.” Your TV should display the percentage level of your remote’s battery on the TV screen. You can also check the battery level of your SolarCell.

Following my #shorts video on how to find out how much your Samsung Solar remote battery is charged (• Check Samsung solar remote control battery.), I made this video showing the quickest way to do it. You will need to have Bixby enabled in order to use this method.more Samsung BU8000 4K UHD.

This article will guide you through the simple steps to check your Samsung solar remote’s battery level. You’ll discover quick tips to keep your remote functioning at its best. By the end, you’ll be equipped to monitor your remote’s battery life with ease, so you can focus on enjoying your favorite.

How to check the remote controller battery status?

There are many models for Samsung remote controllers, among them the ones that charge with solar cells and many more, but from time to time they need to be charged based on their battery percentage. 1 Press the Home button to check the menu. 2.

To check the battery level, press the Home button, navigate to the settings menu on your TV, and select “Battery Status”. To check the battery level of your Samsung solar remote, press the voice button on the remote and say



“Remote battery”. Your TV should display the percentage level of your.

The first step in checking the battery level on your Samsung solar remote is to locate the battery indicator. The battery indicator is a small icon on the remote that tells you how much battery life is left. This icon is typically located in the top right corner of the remote, but it may vary. How do I know if my solarcell remote has a battery?

The quickest way to check the battery level of your Samsung SolarCell Remote is by pressing the voice button on the remote and saying “Remote battery.” Your TV should display the percentage level of your remote’s battery on the TV screen. You can also check the battery level of your SolarCell remote in your TV’s settings:.

How do I Check my remote battery level?

Press the Home button on the remote. Go to Menu then “ Settings.” Select “ All Settings.” Press “ General & Privacy.” Find and select “ Power and Energy Saving.” Go to “ Available Remote Battery ” and look at the percentage. Can You Check the Battery Level Without the Remote?

.

How to check the battery level of a smart remote control?

The smart remote control is quite an advanced device, the status information of the remote control is displayed on the TV. You can find out the battery level by looking at the remote control information on the TV. To do this, open the TV menu and find information about the remote control.

Can you use a solar remote while charging a Samsung TV?

To maximize your Samsung solar remote’s power and energy-saving benefits, leave it alone until it’s done charging. Using your SolarCell Remote while it charges will result in a longer charging time. While your SolarCell charges, you can control your TV with the SmartThings app.

Why is my Samsung solar remote not charging?

If your Samsung solar remote won’t charge with solar power, try charging it with a USB-C cable. If your remote still won’t charge, troubleshoot to see if it is functioning properly. To check the status of your SolarCell Remote, press and hold the Return button and the Play/Pause button until you see “Remote is



Connected” on the TV screen.

How do I Reset my solarcell remote?

To check the status of your SolarCell Remote, press and hold the Return button and the Play/Pause button until you see “Remote is Connected” on the TV screen. If the remote isn’t connected or responding to the TV, you might need to reset it: 2023 SolarCell Remote: Hold the Enter and Return buttons for 10 seconds.



How to check samsung solar remote battery level

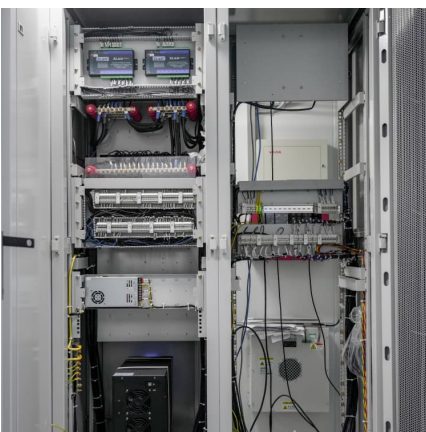


Samsung TV SolarCell Remote Guide

By exposing the remote's solar panel to indoor and outdoor light with the panel facing upwards, you can extend its usage time. To check the battery level or adjust remote ...

[How To Check Battery Level On Samsung Solar Remote](#)

To check the battery level of your Samsung solar remote, press the voice button on the remote and say "Remote battery". Your TV should display the percentage level of your ...



How to Check Battery Level on Samsung Solar Remote Quickly

To learn how to check battery level on Samsung solar remote, simply observe the indicator lights or access the settings menu for updates.

How to check battery level on samsung solar remote? - ...

Once you have located the battery indicator, you can check the battery level by pressing the power button on the remote. When you press the



power button, the battery ...



[Samsung SolarCell Remote Battery and Charging Guide](#)

The quickest way to check the battery level of your Samsung SolarCell Remote is by pressing the voice button on the remote and saying "Remote battery." Your TV should ...

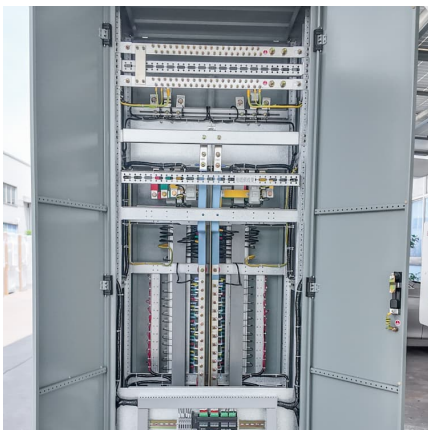
How to Check Battery Level on Samsung Solar Remote: A Step ...

Let's face it - we've all done the frantic couch-cushion dive when our TV remote dies mid-binge. But what happens when your Samsung Solar Remote starts acting up?



The quickest way to check Samsung Solar remote battery status

Following my #shorts video on how to find out how much your Samsung Solar remote battery is charged (o Check Samsung solar remote control battery), I made this video showing



How to Check Samsung Solar Remote



Battery Level and Ensure

This article will guide you through the simple steps to check your Samsung solar remote's battery level. You'll discover quick tips to keep your remote functioning at its best.



[How to check the remote controller battery status?](#)

There are many models for Samsung remote controllers, among them the ones that charge with solar cells and many more, but from time to time they need to be charged based on their battery percentage.

[How to check the remote controller battery status?](#)

There are many models for Samsung remote controllers, among them the ones that charge with solar cells and many more, but from time to time they need to be charged ...



Contact Us

For catalog requests, pricing, or partnerships, please visit:
<https://www.conrad.edu.pl>