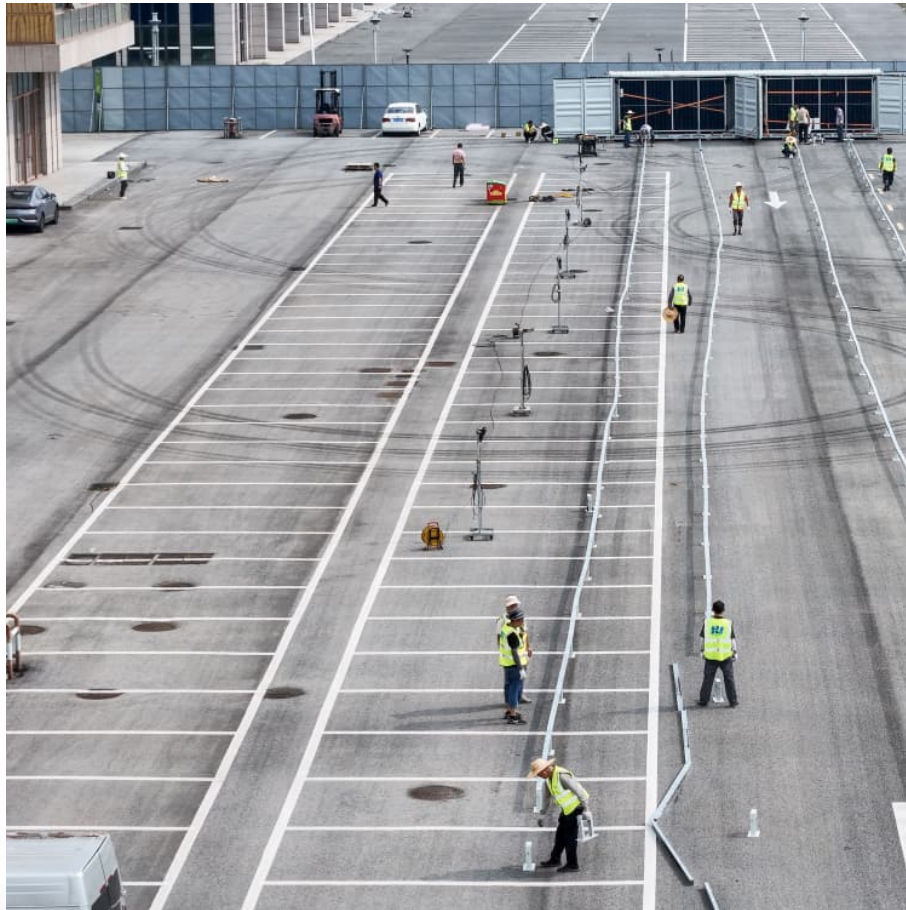


How to close the power storage device





Overview

How do I power off my external hard drive?

Locate the power button: Look for the power button on your external hard drive. It is typically located on the front or back of the drive. **Press the power button:** Once you have located the power button, press and hold it for a few seconds to initiate the power-off sequence.

How do I unplug my external hard drive?

Locate the power button on the drive and press it to turn off the device. If your drive doesn't have a dedicated power button, you can safely unplug it from the power source. **Store the drive properly:** Once your external hard drive is turned off, it's important to store it in a safe and secure location.

How do I safely remove an external drive from my PC?

Disconnecting or "safe removal" of an external drive from your PC is handled by the Windows Safely Remove program. The following are the steps necessary to safely remove an external drive from your Windows computer:
Note: Failure to follow this procedure may result in data loss to an external drive.

Why should I Turn Off my external hard drive?

By turning it off when not in use, you can reduce your environmental footprint and save on electricity costs. **Preventing data corruption:** Sudden power loss or improper disconnection of an external hard drive can result in data corruption or file system errors.

How do I eject a WD drive?

Safe eject a drive on Windows, macOS, or WD Drive Utilities. Click Safely Remove Hardware. Click the drive to eject. Remove the drive after the Safe to Remove Hardware message shows. Need more help?



Right-click the drive. Select Eject. Remove the drive once ejected. WD Drive Utilities can be used on supported WD drives.

How do I remove a removable device without using safely remove hardware?

If you have the removal policy (write caching) for a removable device set to quick removal, you can disconnect the device safely without needing to use Safely Remove Hardware. 1 Open This PC in File Explorer (Win+E). I never could get this option to work for me, so your milage may vary. 1 Open Run (Win+R). 1 Open Settings (Win+I).



How to close the power storage device



How to disconnect and reconnect USB devices on the command ...

sd 4:0:0:0: [sdb] Attached SCSI removable disk
power off gnome-drive 's power off button device disappears on everything, like physically unplugged indistinguishable from ...

How to turn-off "Allow this computer to turn off this device to save

We have a group of computers that we want to disable (un-check) "Allow this computer to turn off this device to save power" in Device Manager for all USB devices.



[How to Shut Down and Restart Your Dell EMC Unity DPE](#)

First, we'll show you how to power down your system in unisphere under the system heading, select service, then select service tasks. Now under storage system, select shutdown storage system, check the status of the shutdown process by looking at the SP led indicators.



PowerStore: Managing node, appliance, and cluster power cycles

PowerStore: Managing node, appliance, and cluster power cycles Summary: This article provides guidance on powering on and off or



rebooting the PowerStore series ...



[How to enable or disable USB Ports in Windows 11](#)

Restrict access or disable CD/DVD ROM Drives, USB Ports, USB mass storage in Windows 11/10 using Registry, Device Manager, Control Panel, Free Tools.

[Powering On or Off the Storage Device](#)

Powering on and powering off a storage device entail powering on or off interface modules and other hardware components. Following the correct procedure can prevent device damage ...



[How To Safely Disconnect an External Drive from ...](#)

You can now power down/disconnect your external drive from your computer. Note: At times while Safely Removing an external drive, Windows may show a ...



[Amazon : Portable Power Storage Systems](#)

1-16 of over 20,000 results for "portable power storage systems" Results Check each product page for other buying options. Price and other details may vary based on product size and color.



In Windows 11, do you have to safely eject a mass storage device ...

Is it true that in Windows 10 and Windows 11 you no longer have to click on the Safely Remove Hardware icon in the system tray to eject a USB connected mass storage device ...

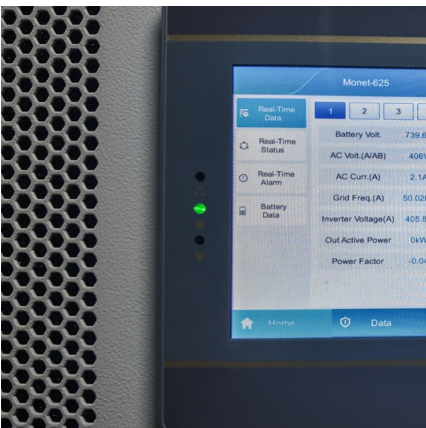
[Disable or Enable USB Drive Access on Your ...](#)

Gain complete control over USB drives on Windows. Learn multiple methods to disable/enable USB ports, block/unblock storage devices for enhanced ...



Electricity and Energy Storage

Electricity storage on a large scale has become a major focus of attention as intermittent renewable energy has become more prevalent. Pumped storage is well ...





Problem Ejecting USB Attached SCSI (UAS) Mass Storage Device ...

Problem Ejecting USB Attached SCSI (UAS) Mass Storage Device , How to Fix? In this video, I will show you Problem Ejecting USB Attached SCSI (UAS) Mass Stora



[Fix Problem Ejecting USB Mass Storage Device](#)

Fix Problem Ejecting USB Mass Storage Device, This Device Is Currently In Use, 2 Methods.If you like the tutorial, then please support my channel by

[What is a Storage Device? Definition, Types, Examples](#)

The storage unit is a part of the computer system which is employed to store the information and instructions to be processed. A storage ...



"problem ejecting usb attached scsi (uas) mass storage device" ...

Today for the first time it keeps telling me it cannot eject as some program is still using it: "Problem ejecting usb attached scsi (uas) mass storage device. Windows can't stop your 'USB ...



[Disable USB System or Certain Ports in Ubuntu 24.04...](#)

Your system will read the blacklist-usb-storage nf config file on startup, and block loading the 2 kernel modules (usb_storage and uas) for ...



[How to turn USB-connected device on and off in linux?](#)

Under Windows, i can go to the device manager and disable-enable the device, which results in it working again, but how can i do the same ...

Energy storage

Energy storage is the capture of energy produced at one time for use at a later time [1] to reduce imbalances between energy demand and energy production. A device that stores energy is ...



Powering off the Storage Device

To power off the storage device, you can either press and hold the controller enclosure's power button for 5 seconds or execute power-off operations on DeviceManager. This document ...



[How to Safely Eject an External Storage Device](#)

By safely ejecting an external storage device you can avoid lost or damaged files when disconnecting the device from your PC. This video shows you 2 ways that you can safely eject your



[How disable and enable usb port via command prompt?](#)

I have the same problem and I use a solution that takes the best of the two previous answers:
1º-We disable the functionality that allow us to detect new external storage ...

[Disable USB Ports/Devices in Windows 10 via PowerShell](#)

Obviously, I can't script this bit so trying to get the same result by disabling the USB port or the device itself. I've tried Disable-PnpDevice but I just get 'Generic failure'. There ...





[VMax3 and PowerMax Deallocation Steps , Dell EMC ...](#)

Storage Deallocation procedure for a Dell EMC VMax3 and PowerMax array. Steps and symcli commands used to perform Full or Partial reclaim.

Contact Us

For catalog requests, pricing, or partnerships, please visit:
<https://www.conrad.edu.pl>