

# How to connect solar charger to battery





## Overview

---

Proper Connection Steps: Follow a systematic connection process: disconnect power, connect the charge controller to the battery, attach solar panels to the charge controller, and finally link the inverter to the battery.

Proper Connection Steps: Follow a systematic connection process: disconnect power, connect the charge controller to the battery, attach solar panels to the charge controller, and finally link the inverter to the battery.

Whenever you add energy storage to a solar system, add a charge controller in between the panels and the battery • Lowers the voltage of panels down to the level of the battery. When the battery is directly connected to panels whose voltage is higher, the battery heats up. Not only does it decrease.

Proper Connection Steps: Follow a systematic connection process: disconnect power, connect the charge controller to the battery, attach solar panels to the charge controller, and finally link the inverter to the battery. Safety Precautions: Prioritize safety by disconnecting power sources, using.

Charging your batteries with a solar panel is a great way to use clean, renewable energy. However, before you can get started, you'll need to install a charge controller, which regulates the voltage from the solar panel as it's transferred to the battery. Otherwise, on sunny days, the solar panel.

In this article, I will explain how to connect a solar panel to a battery step-by-step. I will also share a few tips you need to know along the way. Here is a diagram connecting a single 100W solar panel to a 12V 100Ah lithium battery and a 500W inverter: In the first step, you will wire the.

To connect a battery to a solar charger effectively, it involves several key steps and considerations. 1. Understand the type of battery being used, which is typically either lead-acid or lithium-ion, as each has distinct characteristics. 2. Choose the correct solar charger, ensuring it matches the.

Connecting a solar charge controller to a battery is a crucial step in setting up a solar power system. A solar charge controller regulates the flow of electricity



from your solar panels to your battery, ensuring safe and efficient charging. In this blog post, we'll guide you through the process of.



## How to connect solar charger to battery

---



### How to Connect Solar Panel to Battery & Light with controller

How to Connect Solar Panel to Battery & Light with controller , Solar Charge Controller installation Wiring Solar Charge Controller to Battery and Solar panel

### Simple Ways to Charge a Battery with a Solar Panel: 11 Steps

Here I will show you how to connect a solar panel to a 12V battery. You will need a charge controller to prevent overcharging. I use diagrams to explain



### How to Hook Up a Solar Panel to a Battery: A Step-by-Step Guide

Connecting solar panels to a battery system is essential for storing energy generated from the sun. This setup allows you to use solar power when the sun isn't shining, ...

### How to Connect Solar Panel Charge Controller Battery and ...

Learn how to effectively wire solar panels, charge controllers, batteries, and inverters for maximum efficiency. We provide step-by-step

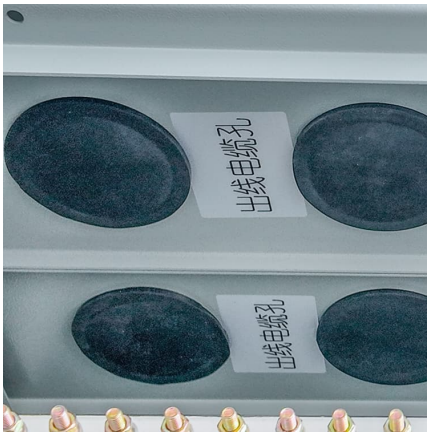


instructions, essential safety tips, ...



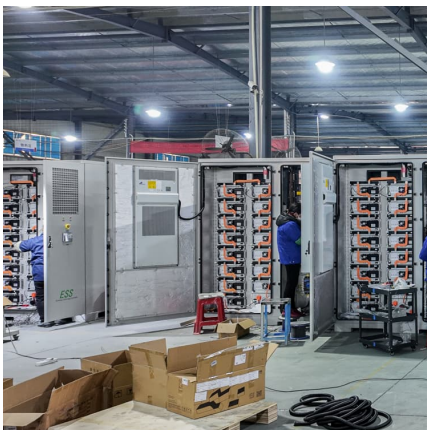
### **How to connect solar panels to battery bank, charge controller ...**

A charge controller acts as a safety barrier between panels and a battery and should be a part of every home solar panel installation. In this article, we'll explain how to wire ...



### [How to Connect a Solar Panel to a 12V Battery? \[Diagrams\]](#)

Here I will show you how to connect a solar panel to a 12V battery. You will need a charge controller to prevent overcharging. I use diagrams to explain



### **How to Connect Solar Charge Controller to Battery? - ECGSOLAX**

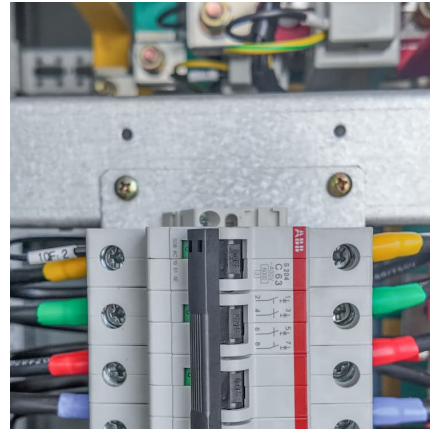
Connecting a solar charge controller to a battery is a relatively simple process, but it's important to do it correctly to ensure safe and efficient charging. By following the steps ...

### **Connect Panels to a Battery Bank, Charge**



### Controller & Inverter

This article from ShopSolar provides a guide on how to connect solar panels to a battery bank, charge controller, and inverter in a DIY solar panel system. It emphasizes the ...



### How to Connect Solar Panel to Battery & Light with controller , Solar

How to Connect Solar Panel to Battery & Light with controller , Solar Charge Controller installation Wiring Solar Charge Controller to Battery and Solar panel

### [How to connect a battery to a solar charger , NenPower](#)

To connect a battery to a solar charger effectively, it involves several key steps and considerations. 1. Understand the type of battery being used, which is ty...



### How to Connect Solar Charge Controller to Battery? - ...

Connecting a solar charge controller to a battery is a relatively simple process, but it's important to do it correctly to ensure safe and efficient charging. By following the steps and tips outlined in this blog post, you can ...



## Simple Ways to Charge a Battery with a Solar Panel: 11 Steps

To charge a battery with a solar panel, connect a charge connector to the solar panel. Divide the wattage of the solar panel by the voltage of the battery to get the number of ...



## Contact Us

---

For catalog requests, pricing, or partnerships, please visit:  
<https://www.conrad.edu.pl>