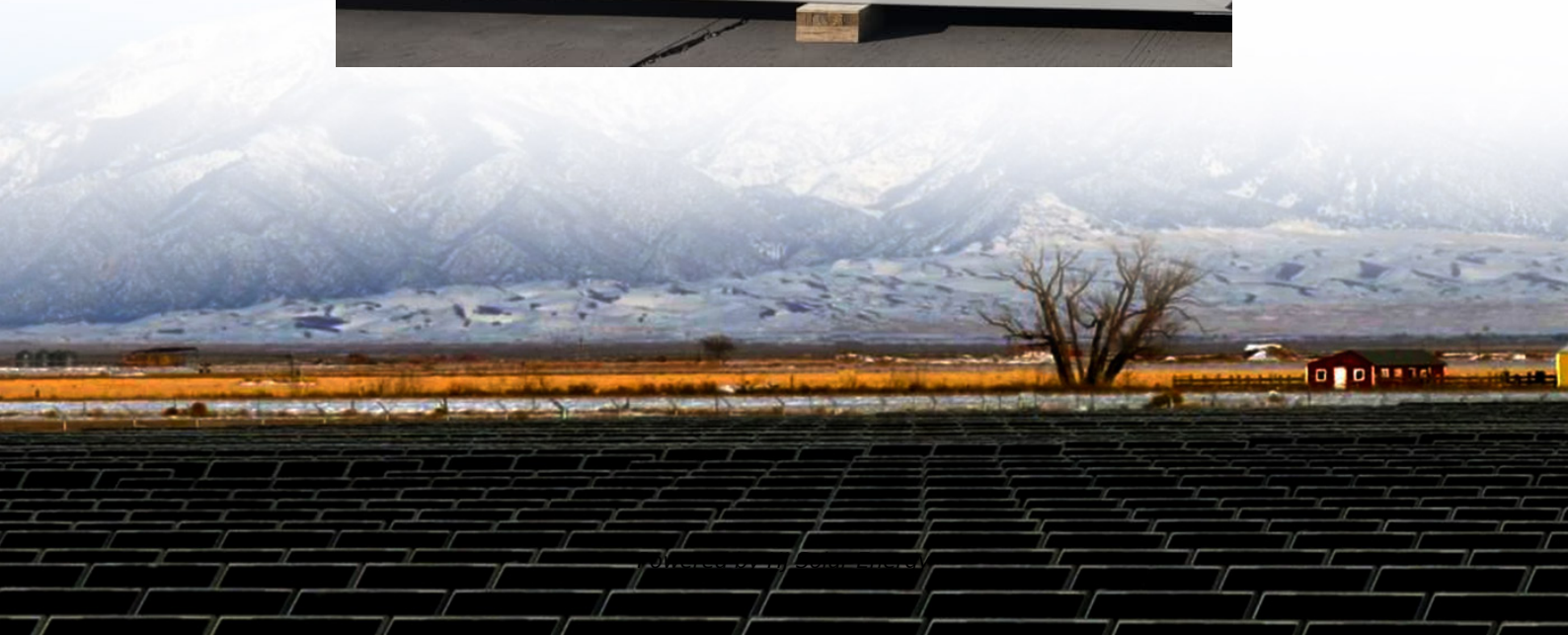


How to connect solar panel to battery and charge controller





Overview

This article from ShopSolar.com provides a guide on how to connect solar panels to a battery bank, charge controller, and inverter in a DIY solar panel system. It emphasizes the importance of proper preparation, using the right components, and.

This article from ShopSolar.com provides a guide on how to connect solar panels to a battery bank, charge controller, and inverter in a DIY solar panel system. It emphasizes the importance of proper preparation, using the right components, and.

Whenever you add energy storage to a solar system, add a charge controller in between the panels and the battery • Lowers the voltage of panels down to the level of the battery. When the battery is directly connected to panels whose voltage is higher, the battery heats up. Not only does it decrease.

Connecting solar panels to batteries is a critical skill for anyone looking to harness renewable energy for their home, RV, boat, or off-grid system. While the process might seem straightforward, improper connections can lead to equipment damage, safety hazards, or system failures that cost.

In this article, I will explain how to connect a solar panel to a battery step-by-step. I will also share a few tips you need to know along the way. Here is a diagram connecting a single 100W solar panel to a 12V 100Ah lithium battery and a 500W inverter: In the first step, you will wire the.

Proper Connection Steps: Follow a systematic connection process: disconnect power, connect the charge controller to the battery, attach solar panels to the charge controller, and finally link the inverter to the battery. Safety Precautions: Prioritize safety by disconnecting power sources, using.

In this guide I'll show you how to connect a solar panel to a charge controller in JUST 3 steps. To help you out, I've made a wiring diagram and step-by-step videos. Follow along and your charge controller will be wired and set up properly in no time. Here we go: Note: I've sized the materials for.



This article from ShopSolar.com provides a guide on how to connect solar panels to a battery bank, charge controller, and inverter in a DIY solar panel system. It emphasizes the importance of proper preparation, using the right components, and ensuring safety throughout the installation process. How do you connect a solar panel system to a battery?

To connect your solar panel system, first, disconnect all components. Connect the charge controller to the battery, then attach the solar panels to the charge controller. Finally, connect the inverter to the battery. Always turn on the charge controller before the inverter and check that all indicators are functioning properly.

Do solar panels need a charge controller?

A battery is a fragile thing and high voltage of solar panels can easily destroy it. A charge controller acts as a safety barrier between panels and a battery and should be a part of every home solar panel installation. In this article, we'll explain how to wire together solar panels, a regulator and a battery. But what does a battery fear?

.

How do you connect a solar panel to a charge controller?

Connecting the Charge Controller Connect Solar Panel to Controller: Attach the positive wire from the solar panel to the charge controller's positive terminal, and do the same with the negative wire. Secure Connections: Tighten all terminal screws to prevent loose connections that could disrupt the current flow or cause safety issues.

What is a solar charge controller?

The charge controller is the critical component that regulates power flow when you connect solar panels to battery systems: Maximum Power Point Tracking (MPPT) controllers extract 20-30% more energy from solar panels by continuously adjusting to optimal voltage and current combinations.

How to connect a solar inverter to a battery?

Proper Connection Steps: Follow a systematic connection process: disconnect power, connect the charge controller to the battery, attach solar panels to the charge controller, and finally link the inverter to the battery.



How to wire solar panels?

In the first step, you will wire the battery to a charge controller. It is essential to wire this component before you wire the solar panels. If you wire the solar panels to your charge controller first, the fuse of the charge controller might blow. If your charge controller has no replaceable fuse, you can't use it anymore.



How to connect solar panel to battery and charge controller



[Connect Solar Panel to Charge Controller: 3 Steps \(w/ ...\)](#)

In this guide I'll show you how to connect a solar panel to a charge controller in JUST 3 steps. To help you out, I've made a wiring diagram and step-by-step videos.

How to connect solar panels to charge controller in 3 ...

The question of how to connect a solar panel to a charge controller usually comes from customers who want to build a small DIY off-grid system on their own. Let's start by gathering the parts.



[How to Connect Solar Panels to Batteries: A Step by ...](#)

Learn the step-by-step process to safely and efficiently connect solar panels to batteries, ensuring optimal energy storage and performance for your solar power system.

Complete Solar Panel Connection with Solar Charge Controller ...

Complete Solar Panel Connection for Home with Inverter & Battery in this video, we are trying to let you know that how to connect solar panel ?



[Complete Solar Panel Connection with Solar Charge ...](#)

Complete Solar Panel Connection for Home with Inverter & Battery in this video, we are trying to let you know that how to connect solar panel ?



How to Connect Solar Panel Charge Controller Battery and ...

Learn how to effectively wire solar panels, charge controllers, batteries, and inverters for maximum efficiency. We provide step-by-step instructions, essential safety tips, ...



Connect Panels to a Battery Bank, Charge Controller & Inverter

This article from ShopSolar provides a guide on how to connect solar panels to a battery bank, charge controller, and inverter in a DIY solar panel system. It emphasizes the ...





How to Connect Solar Panels to Batteries: A Step by Step Guide

Learn the step-by-step process to safely and efficiently connect solar panels to batteries, ensuring optimal energy storage and performance for your solar power system.



[How to connect solar panels to charge batteries](#)

By understanding and implementing each aspect carefully, individuals can successfully connect solar panels to charge batteries, leading to greater energy independence and environmental responsibility.

How to connect solar panels to battery bank, charge controller ...

A charge controller acts as a safety barrier between panels and a battery and should be a part of every home solar panel installation. In this article, we'll explain how to wire ...



Connect Solar Panel to Charge Controller: 3 Steps (w/ Videos)

In this guide I'll show you how to connect a solar panel to a charge controller in JUST 3 steps. To help you out, I've made a wiring diagram and step-by-step videos.



How to connect solar panels to charge batteries , NenPower

By understanding and implementing each aspect carefully, individuals can successfully connect solar panels to charge batteries, leading to greater energy independence ...



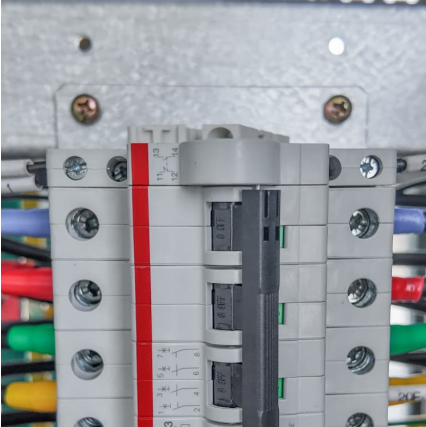
[How to Connect Solar Panels to Battery: Complete ...](#)

Learn how to safely connect solar panels to batteries with our expert step-by-step guide. Includes wiring diagrams, safety tips, and troubleshooting advice.

[How to Connect a Solar Panel to a 12V Battery?](#)

Here I will show you how to connect a solar panel to a 12V battery. You will need a charge controller to prevent overcharging. I use diagrams to explain

[How to Connect Solar Panels to Battery: Complete 2025 Safety ...](#)



Learn how to safely connect solar panels to batteries with our expert step-by-step guide. Includes wiring diagrams, safety tips, and troubleshooting advice.

How to connect solar panels to charge controller in 3 steps

The question of how to connect a solar panel to a charge controller usually comes from customers who want to build a small DIY off-grid system on their own. Let's start ...



[How to Connect a Solar Panel to a 12V Battery? \[Diagrams\]](#)

Here I will show you how to connect a solar panel to a 12V battery. You will need a charge controller to prevent overcharging. I use diagrams to explain

Contact Us

For catalog requests, pricing, or partnerships, please visit:
<https://www.conrad.edu.pl>