

How to do if the abb inflatable cabinet mechanism loses power





Overview

Check the power source and its connections; look for loose wires, blown fuses, etc. Use a multimeter to test the voltage levels, ensuring they are within the limits specified by the manufacturer. Replace any worn-out equipment and ensure voltage supply stability through surge.

Check the power source and its connections; look for loose wires, blown fuses, etc. Use a multimeter to test the voltage levels, ensuring they are within the limits specified by the manufacturer. Replace any worn-out equipment and ensure voltage supply stability through surge.

An instruction on how to eliminate the danger to simplify doing the work. The table below defines the captions specifying the danger levels used throughout this manual. Warns that an accident will occur if the instructions are not followed, resulting in a serious or fatal injury and/or severe.

Hello everyone, in this video I will go over some inflatable fixes that I did not discuss in the first video. My inflatable had no power when I plugged it up this year. I'll go over sizing the inflatable power supply. How to size new inflatable lights with your old inflatable power supply. I.

Power supply failure is one of the most common problems with ABB parts, especially with drives and control panels. The leading causes of power supply failure include voltage fluctuation, loose connections, and equipment aging. Check the power source and its connections; look for loose wires, blown.

Except as may be expressly stated anywhere in this manual, nothing herein shall be construed as any kind of guarantee or warranty by ABB for losses, damages to persons or property, fitness for a specific purpose or the like. Troubleshooting the system power supply . . . 4.10 Troubleshooting.

If its the IRC5 controller then there is no backup battery in the controller, instead you have an ultra-capacitor which provides enough power when shutting system off to save out the system onto the flash drive. If you you have an S4C+ M2000 controller then there will be a 21.7V battery down on the.



The operation sequence of Gas filled cabinet usually includes the following steps to ensure safe and correct operation: Check the air pressure: Before operation, first check the air pressure gauge of the inflatable cabinet to ensure that the air pressure is within the safe range. If the air. What are the most common problems with ABB parts?

Such an understanding could aid businesses in maintaining efficiency while minimizing downtime losses. Power supply failure is one of the most common problems with ABB parts, especially with drives and control panels. The leading causes of power supply failure include voltage fluctuation, loose connections, and equipment aging.

Is ABB liable for damages arising from use of this manual?

In no event shall ABB be liable for incidental or consequential damages arising from use of this manual and products described herein. This manual and parts thereof must not be reproduced or copied without ABB's written permission, and contents thereof must not be imparted to a third party nor be used for any unauthorized purpose.

What is ABB & how does it work?

ABB is a continental giant in industrial automation and electrical equipment. Its components find application in a multitude of industries, including manufacturing, energy, transportation, and infrastructure. Nevertheless, like any mechanical or electrical component, ABB parts may face issues that will, in turn, lead to interruptions in operations.

Is ABB responsible for errors in this manual?

ABB assumes no responsibility for any errors that may appear in this manual. Except as may be expressly stated anywhere in this manual, nothing herein shall be construed as any kind of guarantee or warranty by ABB for losses, damages to persons or property, fitness for a specific purpose or the like.

What happens if an ABB sensor or actuator fails?

Automation systems depend on sensors and actuators. Malfunctioning sensors and actuators can cause erroneous readings or failure of operations. If an ABB sensor or actuator is inoperative, the wiring and connections must be examined for loose or broken parts. Also, calibration checks must be done regularly to ensure accuracy.

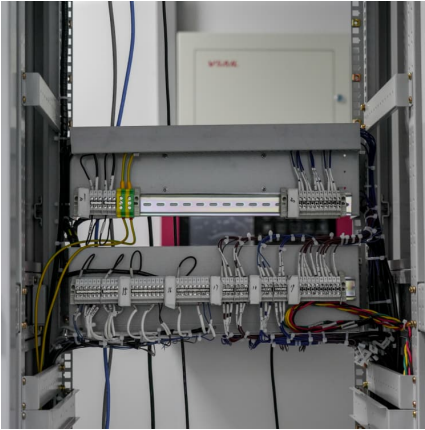


Is the information in this manual a commitment to ABB?

The information in this manual is subject to change without notice and should not be construed as a commitment by ABB. ABB assumes no responsibility for any errors that may appear in this manual.



How to do if the abb inflatable cabinet mechanism loses power

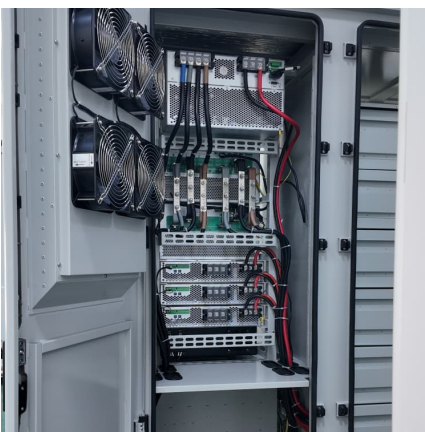


Document template

To power up the NGC in an office/lab environment, make sure to have an AC ground and jumper the AC and DC output grounds on the power supply as per Table 1--4 or Table 1--5.

[ABB IRC5 Control Cabinet Repair Case -- inRobots.shop](#)

In this case study, learn how to troubleshoot common failures, from power issues to unresponsive controllers, to ensure industrial automation uptime and efficiency.



5/15 kV non-arc resistant switchgear

The system/product owners must establish and maintain appropriate measures, including, but not limited to, the installation of firewalls, application of authentication measures, encryption of ...

How to Find an Air Leak in Your Inflatable Hot Tub: A ...

Slow leak in your inflatable hot tub? Learn 7 proven methods to find air leaks fast! DIY soapy water test, submersion & more. Save money on



repairs.



[Coleman Saluspa Troubleshooting: step by step guide](#)

Discover simple Coleman Saluspa troubleshooting solutions for heating, pump, or inflation problems. Restore your spa and relax stress-free.

[Common Generator Problems \(with Troubleshooting ...\)](#)

While keeping your generator well-maintained by performing routine maintenance can help minimize problems, when you own a generator long enough you can ...



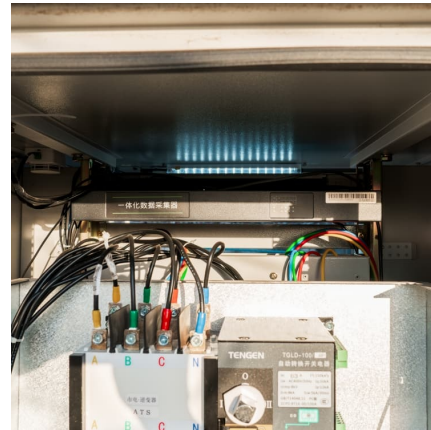
ABB Synchronizing equipment

SYNCHROTECT cabinets can be designed specifically for customers requirements and are used to synchronize generators and to parallel lines Application Synchronizing system for automatic ...



Where is the inflatable cabinet generally suitable for?_Shenheng Power

The whole cabinet adopts air insulation combined with sulfur hexafluoride gas chamber, which is compact and expandable, suitable for distribution automation. The charging cabinet has the ...

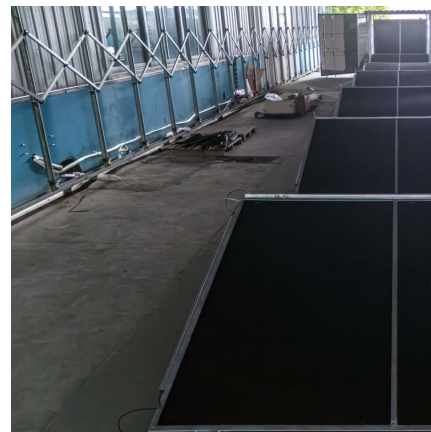


[Common Issues with ABB Parts & Troubleshooting ...](#)

Check the power source and its connections; look for loose wires, blown fuses, etc. Use a multimeter to test the voltage levels, ensuring they are within the ...

ABB Select Remote I/O (RIO) Cabinets

Overview ABB Select Remote I/O Cabinets allow customers to install standardized cabinets early during a project, then select the type of I/O later. They arrive ready for installation close to field ...



CABINET_DESIGN_04

Welcome to the Principle Cabinet Design training module for the DCS800, ABB DC drives. If you need help navigating this module, please click the Help button in the top right-hand corner. To ...



Abb s high-voltage cabinet inflatable cabinet does not store ...

Why should you choose ABB control cabinets? ABB has developed a wide portfolio of control cabinets to be able to meet today's diverse and evolving customer requirements within power ...



ACS580MV Troubleshooting manual

oOnly ABB Service and ABB certified service partners are allowed to service the drive and change any of the parameters described in this manual. oRead the complete safety instructionsbefore ...

Operating manual

While trouble shooting, all or any power may be switched on, the manipulator movement may be controlled manually from the FlexPendant, by a locally running robot program or by a PLC to ...





Inflatable Fix, How to Fix an Inflatable with no Power, Inflatable ...

Hello everyone, in this video I will go over some inflatable fixes that I did not discuss in the first video. My inflatable had no power when I plugged it up this year.

December 2006 ABB circuit-breakers inside LV switchboards

This Technical Paper is intended to deal in detail with the equipment in the switchboard, providing the reader with the basic information necessary to choose the circuit-breakers to be installed ...



High pressure inflatable cabinet structure principle and ...

The main switch of high-voltage inflatable cabinet can be used either with permanent magnet mechanism vacuum circuit breaker or spring ...



Test Cabinet (Inspection Box)

The test cabinet, catalog no. GTC250 (Fig.1) is used to operate an EntelliGuard GTM Drawout low voltage power circuit breaker that has been removed from the metal-enclosed equipment.



Outdoor SF6 Circuit Breaker

The operating mechanism, the activating kinematics of the moving contact, all the control and operating circuits and the anti-condensation heater are located inside the tight metal cabinet ...



Hot Tub Not Working After a Power Outage? Here's What to Do

It can be stressful to lose power as a hot tub owner. Depending on the weather and the circumstances of the power outage, there are several concerns to think about including ...



ABB drive troubleshooting , ABB Drive Repair , CM Industry ...

How do I know if my ABB drive is overloaded? If your ABB drive is overloaded, the drive will usually trip the circuit breaker. You can also look at the drive's operating ...





Contact Us

For catalog requests, pricing, or partnerships, please visit:
<https://www.conrad.edu.pl>