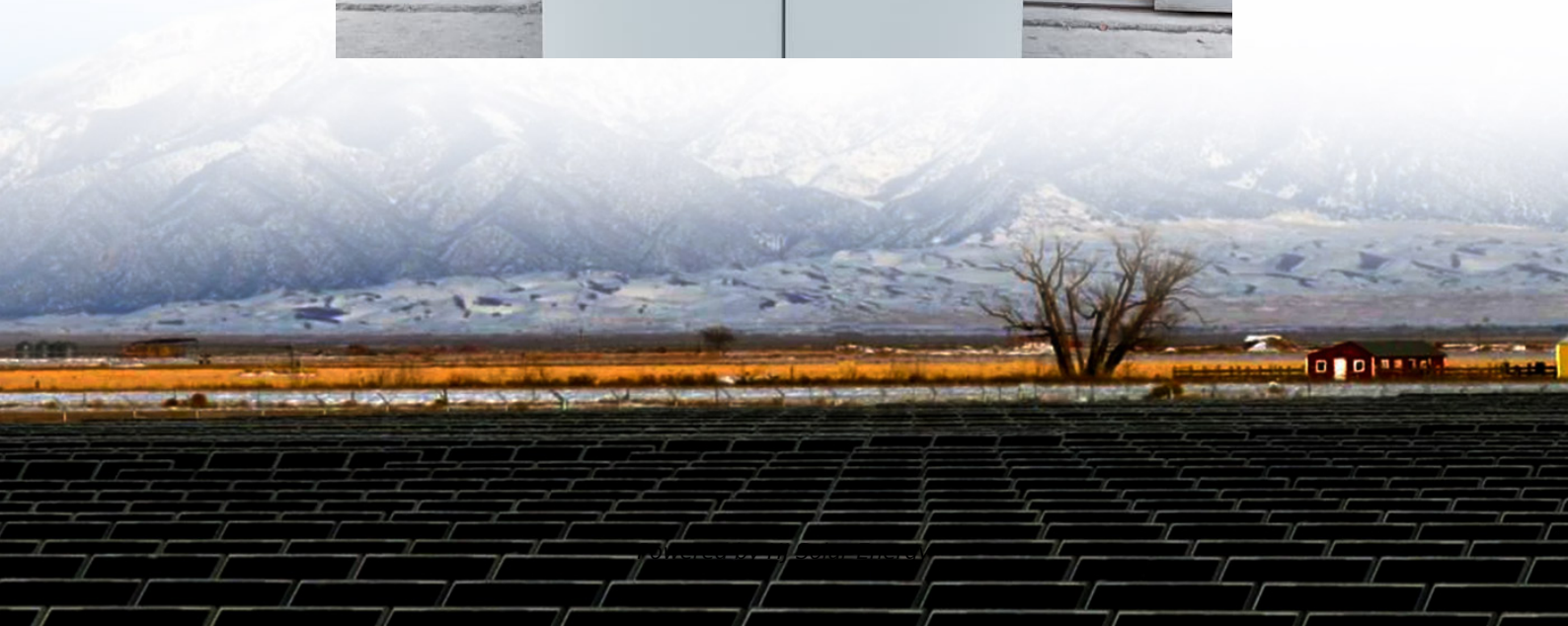


# **How to remove the energy storage conversion button**





## Overview

---

### How do I Turn on Energy Saver windows 11?

To do that, first, open Windows 11 Settings (Windows + I) and navigate to System > Power (on desktop PCs) or System > Power & battery (on laptops and other devices with a battery). Next, click or tap Energy saver to extend this section of settings, and then click or tap the Always use energy saver switch. What does Windows 11 Energy saver do?

.

### How do I Turn Off Energy Saver?

Select the battery percentage from the “Turn energy saver on automatically when the battery level is at” dropdown menu. That’s it, Energy Saver will automatically turn on or off depending on the battery percentage. If you want to enable or disable Energy Saver mode manually, you can also use the Settings app.

### What is Energy Saver mode in Windows 11?

The Energy Saver feature in Windows 11 reduces your PC’s power consumption and on laptops, improves the battery life and backup time. Let’s learn how to enable or disable Energy Saver mode on Windows 11. By default, Windows 11 runs on a Balanced Power Plan. As the name implies, it tries to balance power consumption and performance.

### How to turn energy saver on automatically?

Turn energy saver on automatically when battery level is at - the default battery level is 30%. However, you can click or tap the drop-down list next to it and choose another percentage from the list: Never, 10%, 20%, 40%, 50%, or Always.

### How does Windows 11 Energy Saver work?



This signals that the Energy saver is turned on and doing its job. Aside from this minor visual difference, Energy saver does many things in the background to help your Windows 11 machine reduce power consumption and extend battery life. According to Microsoft's technical documentation, here's what it does:.

What is Energy Saver & how does it work?

Energy saver replaces battery saver and exists on Windows 11 24H2 and later versions. It significantly extends battery life and reduces energy consumption by automatically managing power usage across your system and apps for an optimal balance of PC performance and energy efficiency. 1 Open Quick Settings (Win+A). 1 Open Settings (Win+I).



## How to remove the energy storage conversion button

---



### [How to disable the Energy recommendations section ...](#)

Energy recommendations collects settings that have an outsized impact on power consumption in one place, making it easy to reduce your ...

### [How to remove convert option from lead status path?](#)

I have written my own custom lead conversion by adding separate button and its working fine, but from lead status path button it is still working as default. I want to remove this ...



### [How to Remove or Disable Bixby from Power Button ...](#)

Accessing Settings - How to navigate to the relevant settings on your Samsung Galaxy phone. Disabling Bixby from Power Button - Step-by-step instructions ...



## How to Remove Battery Icon from Taskbar in Windows 11: Step ...

How to Remove Battery Icon from Taskbar in Windows 11 In this section, we'll walk you through the steps to hide the battery icon from



your taskbar on a Windows 11 system. ...



### [How to Enable or Disable Energy Saver on Windows 11](#)

Energy Saver mode in Windows 11 reduces power consumption and improves battery life. Here's how enable or disable it in Windows 11 in 3 ways.

### [What is the energy storage conversion rate? . NenPower](#)

The energy storage conversion rate refers to the effectiveness with which stored energy can be converted back into usable energy. 1. It is ...



### **How to eject an external drive or USB stick from Windows**

Did you plug an external hard drive into your Windows 11 or Windows 10 computer and want to remove it safely so that the data on it doesn't get corrupted? Do you ...



## Energy Storage and Conversion

Energy storage and conversion refers to the process of capturing energy produced at one time and storing it for later use, while also enabling the efficient transformation of that energy into ...



## Comprehensive review of energy storage systems technologies, ...

Battery, flywheel energy storage, super capacitor, and superconducting magnetic energy storage are technically feasible for use in distribution networks. With an energy density ...

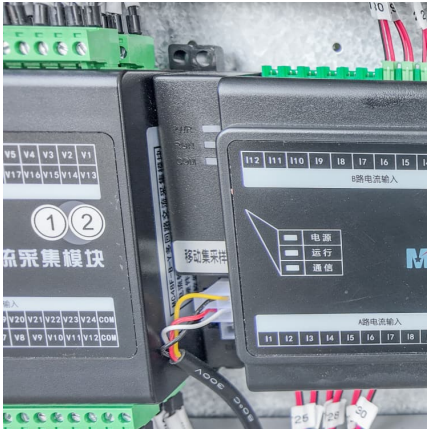
### V 8

Powering on and off Press the 'Power on/off' button (D) to switch on the system. Press the 'Power on/off' button (D) for at least 1.5 seconds and release the button to switch off the system. Light ...



## Samsung TV: How To Remove Banner

How To Effectively Remove The Banner From Your Samsung Tv In This Detailed Tutorial. We Will Walk You Through The Necessary Steps To Navigate Your Tv's Setti



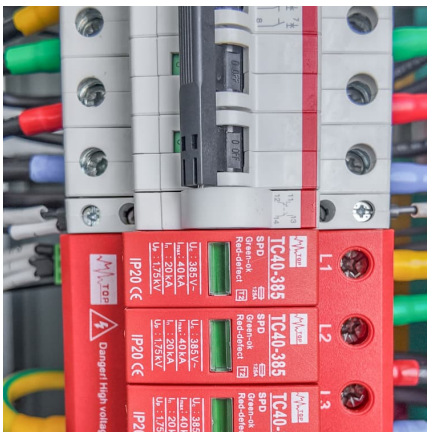
### [How to disable energy recommendations Windows 11](#)

Before delving into the process of disabling energy recommendations, it's essential to understand what these recommendations are and why Windows 11 provides them.



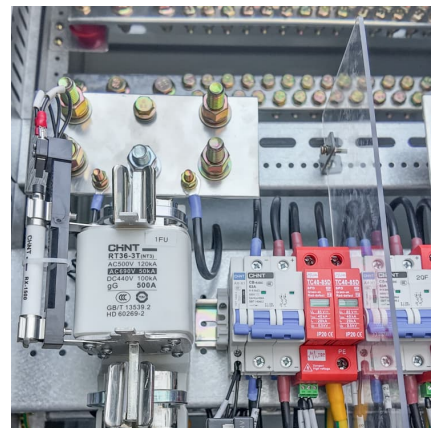
### [Turn On or Off Energy Saver in Windows 11](#)

This tutorial will show you how to turn on or off energy saver for all users in Windows 11. Energy Saver replaces battery saver and exists on Windows 11 24H2 and later ...



## **RENEWABLE ENERGY**

One 2-button display accessible outside the cabinet enables configuration and viewing of the currents of the solar panel, the battery charge and the lamp and the bat-tery voltage.





### [How to Remove Buttons from Samsung Quick Settings](#)

Learn how to add/remove buttons from quick settings bar or how to add/remove the sync button to the quick settings panel and add/remove buttons from quick se

### [How to delete \(remove\) devices from the Energy ...](#)

There's nothing in my configuration.yaml related to the Energy dashboard. I found a solution: In the hidden folder .storage there is a file named energy and inside ...



### [Energy saver in Windows 11: What does it do? How to ...](#)

How to turn on Energy saver in Windows 11  
Energy saver can be manually turned on any Windows 11 device, including laptops, 2-in-1s, and ...

### **How to Remove or Disable Bixby from Power Button on Samsung ...**

Accessing Settings - How to navigate to the relevant settings on your Samsung Galaxy phone. Disabling Bixby from Power Button - Step-by-step instructions to remove Bixby from the power button.



### How do I turn off translation in Outlook? - Quick-Advisors

How do I turn off translation in Outlook? So Basically here are the steps to turn off Mini Translator. Open Outlook 2010. Click "New E-mail" button in the "Home" tab. This will ...

### How to Turn Off Efficiency Mode Windows 11: A Step-by-Step Guide

Turning off efficiency mode in Windows 11 is a simple task that can be done in just a few clicks. This mode is designed to save energy and improve battery life, but sometimes ...



## Contact Us

For catalog requests, pricing, or partnerships, please visit:  
<https://www.conrad.edu.pl>