

Injection molding machine hydraulic energy storage abnormality





Overview

In addition, the energy consumption profile of the tested machines, during one cycle of injection molding process, has been assessed in details to understand the effect of the energy consumption profile on SEC of hydraulic IMMs.

In addition, the energy consumption profile of the tested machines, during one cycle of injection molding process, has been assessed in details to understand the effect of the energy consumption profile on SEC of hydraulic IMMs.

An injection-molding machine (IMM) is equipment that produces all kinds of plastic products. At present, the global production of IMMs amounts to more than 30 million units each year, and its total production accounts for 50% of all plastic molding equipment. Now, the main energy consumption.

The choice of injection molding machine type (hydraulic, hybrid or all-electric) has a substantial impact on the specific energy consumption (SEC). The SEC values for hydraulic, hybrid and all-electric machines analyzed are 19.0, 13.2 and 12.6 MJ/kg respectively (including auxiliaries, compounding).

The general hydraulic injection molding machine adopts constant pump and proportional flow pressure valve valve control system, the hydraulic pump output fixed flow in the entire injection molding process, when the system demand flow is low, the motor speed is unchanged, excess flow overflow back.

Independently the injection molding machines have more energy loss in varies auxiliary equipments. The maximum energy loss can reduce in all the machines. The following considerations are necessary for energy conservation in the moulding process Reduction of heat loss. Increase the cooling tower.

The energy consumption of injection molding machines mainly includes electrical energy consumption, hydraulic oil consumption, and heating energy consumption. Therefore, reducing the energy consumption of injection molding machines and improving energy utilization efficiency have become urgent.



For an injection molding plant that has implemented no effective energy reduction measures, experience shows some 30% of total energy use is discretionary. This is avoidable energy spending that can be clawed back through practical management, maintenance and investment actions. greatest. That.



Injection molding machine hydraulic energy storage abnormality



[Hydraulic and Electric Injection Molding Machines](#)

In the intricate world of injection molding, both hydraulic and electric injection presses are used for custom injection molding projects. While hydraulic ...

The Role of Hydraulic cylinder for injection Moulding in ...

Explore the critical role of hydraulic cylinders in injection molding for plastic machinery, from controlling mold movements to enabling precise ...



Research on energy consumption of injection molding machine ...

In order to understand the energy consumption of injection molding machines driven by different types of electro-hydraulic power units, the energy efficiencies of the ...

The energy consumption of injection molding machines and ...

Reducing the energy consumption of injection molding machines and improving energy utilization efficiency have become urgent



problems to be solved in the plastic ...



Hydraulic and Electric Injection Molding Machines

In the intricate world of injection molding, both hydraulic and electric injection presses are used for custom injection molding projects. While hydraulic machines have been the backbone of the ...



Essential Components of Injection Molding Machines ...

The injection molding process is a sync of various injection molding machine components which work simultaneously and accurately. Each of the ...



Types of Injection Molding Machine : Choose ...

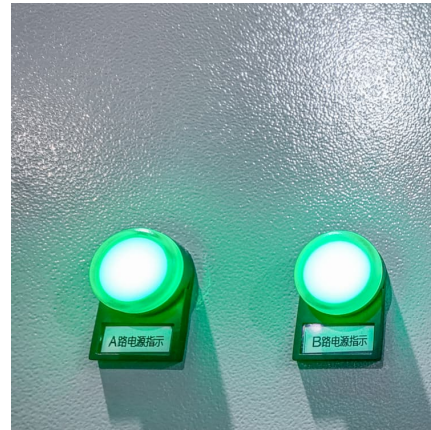
Explore the pros and cons of hydraulic, electric, and hybrid injection molding machines. Learn how to select the right type for your product, budget, and ...





How To Fix Pressure Problems On A Plastic Molding Machine?

Plastic molding machines are precision injection molding equipment that relies on proper pressure control to produce consistent, high-quality parts. Pressure problems can ...



CHARACTERIZING ENERGY CONSUMPTION OF THE ...

In this paper, we selected the injection molding process for characterizing energy. Injection molded parts are widely used in consumer products and industrial equipment. For example, ...

Injection Molding Machine`s Error Codes and ...

We just hope the below information is helpful to improve your daily operations during plastic injection molding. Treatment of common faults ...



All-electric Middle-sized Injection Molding Machine

SUSTAINABLY - Creating a future," and we would like to promote the sustainability of the global environment and the entire industry involved in injection molding. The SE-EV-S-HD series of all ...



Energy Conservation In Plastic Injection Moulding Machines

In the injection moulding machine it is found that hydraulic Pump consumes maximum amount of electrical energy. As a solution to the problem we can install variable frequency drive (VFD), ...



[Electric vs. Hydraulic injection molding machines](#)

What are the differences between electric and hydraulic injection molding? Take a look at the history, benefits and differences between the machines.

Hydraulic Injection Molding Machines Vs Electric Injection Machine

Hydraulic injection molding machines offer higher clamping force, while electric machines are more energy-efficient and provide greater precision. Both options have distinct advantages, ...





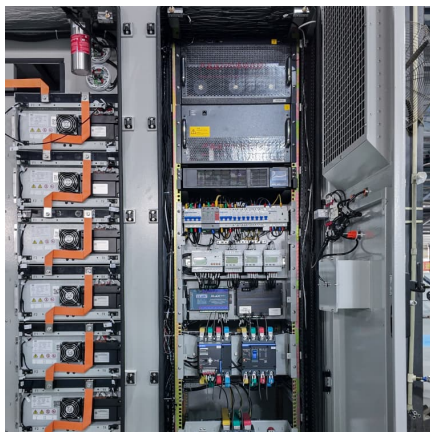
Function of Hydraulic System in Injection Molding

...

Injection molding machine hydraulic system function includes providing power and control, precise control of pressure and flow and so on.

Hydraulic Circuit Diagram Of Injection Molding Machine

Hydraulic injection molding machines use a form of pressurized liquid to transfer energy between different points within the machine. This liquid ...



Electric vs Hydraulic Injection Molding Machine: What's the ...

What is an Electric Injection Molding Machine? At its core, an electric injection molding machine is a type of plastic molding equipment that uses electric servo motors to power the entire injection ...

Energy consumption analysis of the hydraulic system ...

Aiming at the problems of a low working pressure, a large input flow and a high energy consumption caused by the pressure limitation of ...

...



[An Environmental Analysis of Injection Molding](#)

The SEC values for hydraulic, hybrid and all-electric machines analyzed are 19.0, 13.2 and 12.6 MJ/kg respectively (including auxiliaries, compounding and the inefficiency of the electric grid). ...



[Injection molding machine energy storage device](#)

Energy consumption and production cost of the power units for injection molding machine are compared and analyzed. Provide the basis for researchers to optimize the design of electro ...



Injection Molding Machine`s Error Codes and Troubleshooting Solutions

We just hope the below information is helpful to improve your daily operations during plastic injection molding. Treatment of common faults of injection molding machine: 1. ...



Research on energy consumption of injection molding machine ...

Then, the power consumptions of five different types of electro-hydraulic power units during different injection molding stages are compared and analyzed. Finally, the energy ...



[In-Depth Look at Injection Molding Machine Types](#)

There are three types of injection molding machines that are classified based on their drive systems: Hydraulic type, All-Electric type, and ...

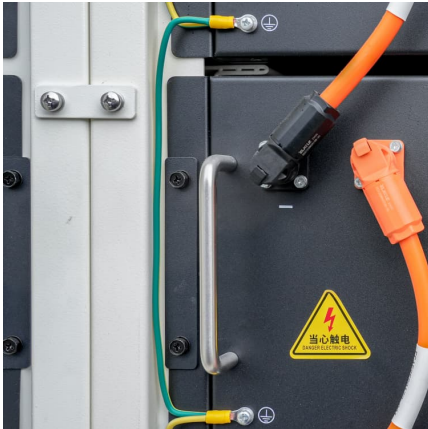
High-Speed Energy-Saving Automatic Injection Molding Machine ...

Key attributes machine type Hydraulic core components PLC, Pump, Motor, Gear, Other ejector number 5 video outgoing-inspection Provided warranty 1 Year style Horizontal machinery test ...



How does a hydraulic system work in an injection molding machine

Manufacturers use injection molding as a manufacturing process to produce plastic parts with high precision and efficiency. At the heart of this process is the hydraulic ...



All-Electric Vs. Hydraulic Injection Molding Machines , SEAWIN

Compare all-electric and hydraulic injection molding machines. Understand performance, costs, and environmental impact to make informed equipment decisions.



Contact Us

For catalog requests, pricing, or partnerships, please visit:
<https://www.conrad.edu.pl>