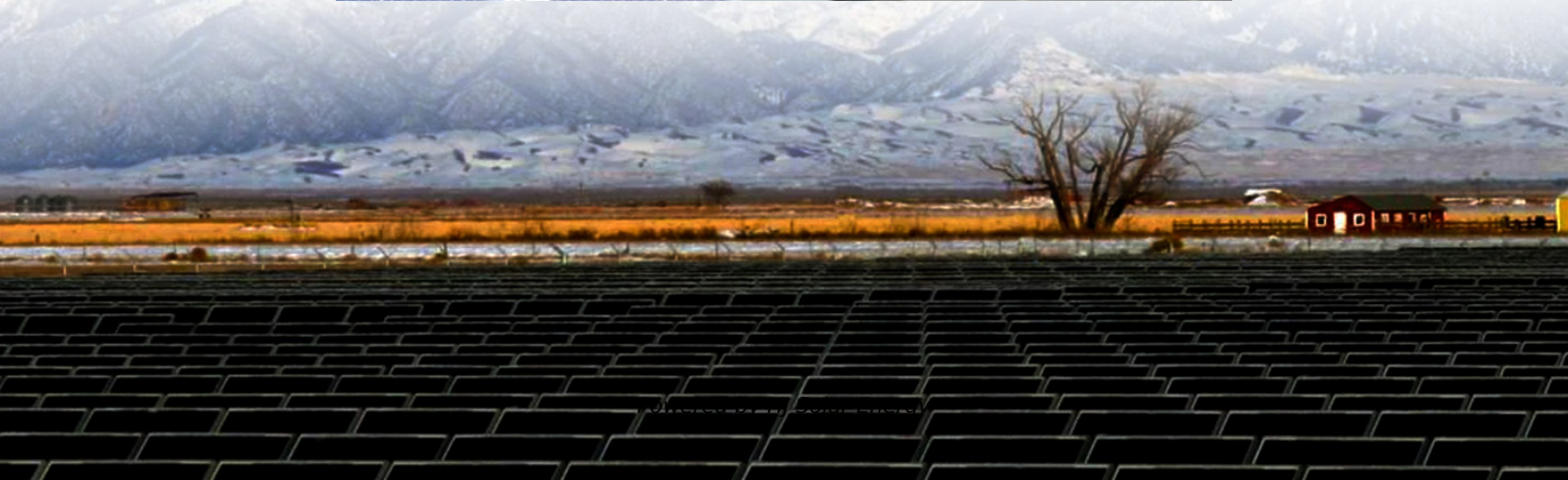


Internal layout of the energy storage prefabricated warehouse





Internal layout of the energy storage prefabricated warehouse

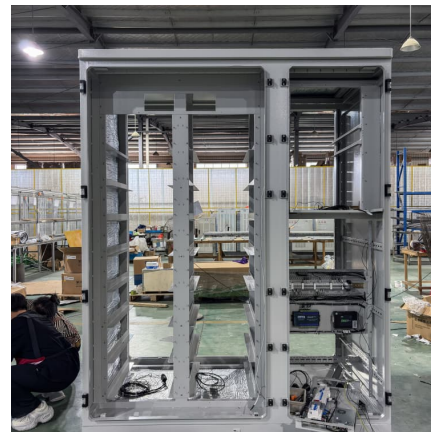


[Warehouse Design & Layout Planning: Steps + Examples](#)

How to Design a Warehouse Layout Plan: Tips & Examples From Real Companies Renovating or setting up a new warehouse space is a tall task. Planning out where equipment, materials, ...

[Prefabricated Steel Structure Warehouse-4 Key](#)

Prefabricated steel structure warehouse redefined the landscape of industrial storage architecture by employing steel as the principal load-bearing material.



The advantages and characteristics of prefabricated steel beam warehouse

The construction period of prefabricated steel beam warehouse is short, energy-saving and environmentally friendly, with high structural strength and high space utilization rate.



[Prefabricated Warehouse Building Manufacture](#)

Energy efficiency: Many prefabricated steel warehouse design has energy-saving -saving functions, such as thermal insulation panels and



energy-saving lighting ...



[20m x 50m Prefabricated Warehouse Building](#)

Discover our 20m x 50m prefabricated warehouse building--fast installation, customizable design, and durable prefab steel construction for all industries.

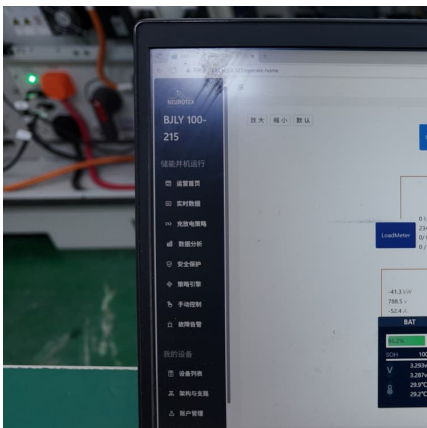
Sale prefabricated new warehouse

From our prefabricated components, this can facilitate the quick installation of a useable and efficient long-lasting warehouse structure. Each warehouse can ...



[Warehouse Building Packages: Popular Sizes](#)

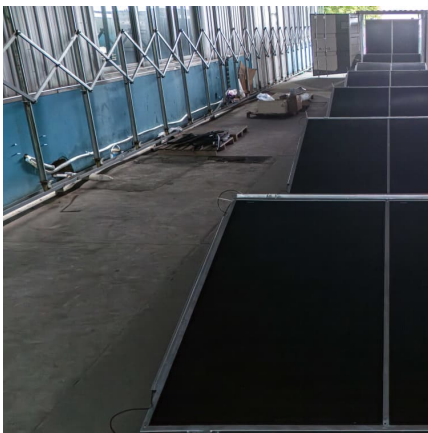
Industrial warehouses have two main priorities: to keep the inventory, machinery, and equipment within them safe and secure, and to provide decades of ...





internal layout of the energy storage prefabricated warehouse

When brainstorming a warehouse layout design, you need to draw out the internal warehouse workflows and how each will connect with one another. And you will need to plan it around ...



[Energy storage warehouse design specifications](#)

ificantly influence warehouse layout decisions. Larger and heavier items require more robust handling equipment and larger storage spaces, whereas high-turnover items need to be stored ...

Types of Warehouse Construction

The design and construction of industrial warehouses require careful consideration. Factors include the type of goods stored, required square footage, and ...



[20-foot energy storage prefabricated warehouse](#)

A prefab steel warehouse building is necessary because it protects your assets from any weather and UV light. It is ideal for small storefronts or large shopping centres and offers maximum ...



[Modular Warehouse Building Solutions , Allied Modular](#)

A modular warehouse office is a prefabricated interior structure designed to create office space within an existing warehouse. These units are fast to ...



[Prefabricated Warehouse Manufacturer and Supplier](#)

Your Reliable Partner and Prefabricated Warehouse Manufacturer in China Sunnyda prefabricated warehouse is constructed from strong and lightweight ...

[Pros And Cons Of Prefabricated Warehouse Buildings](#)

Discover the pros and cons of prefabricated warehouse buildings, from fast installation and cost savings to challenges like ventilation and thermal control.





Sale prefabricated new warehouse

From our prefabricated components, this can facilitate the quick installation of a useable and efficient long-lasting warehouse structure. Each warehouse can be individually sized and ...

[energy storage prefabricated warehouse parameters](#)

Thermal Management Design for Prefabricated Cabined Energy Storage With the energy density increase of energy storage systems (ESSs), air cooling, as a traditional cooling method, limps ...



[Prefabricated Warehouse , Steel Structure Manufacturer](#)

The prefabricated warehouse produced by Canglong group is a light steel building composed of steel columns, steel beams, supports, purlins, etc. All steel structure components of the prefab ...

[How to Choose the Right Prefab Steel Warehouse](#)

Prefab steel warehouse buildings are pre-engineered structures manufactured offsite and assembled on location. Think of them like giant Lego sets but way ...



[2024 Prefabricated Warehouse Design , Pebsteel](#)

The trend of pre-fabricated steel buildings is gradually becoming popular in construction works today. So what is a pre-fabricated warehouse? ...



Contact Us

For catalog requests, pricing, or partnerships, please visit:
<https://www.conrad.edu.pl>