

Introduction to the functions of lithium battery bms





Overview

It is a sophisticated electronic system that manages rechargeable batteries, such as lithium-ion batteries, by diligently monitoring their state, calculating secondary data, reporting that data, protecting the battery, controlling its environment, and balancing it.

It is a sophisticated electronic system that manages rechargeable batteries, such as lithium-ion batteries, by diligently monitoring their state, calculating secondary data, reporting that data, protecting the battery, controlling its environment, and balancing it.

A battery pack's performance, use, and safety are monitored and managed by a battery management system (BMS), an intelligent electronic device. It is a crucial component of contemporary battery technology, especially in uses for lithium-ion batteries. The BMS is in charge of a number of duties.

Lithium-ion batteries have revolutionized modern technology, powering everything from smartphones and electric vehicles to large-scale energy storage systems. However, these powerful energy storage devices require sophisticated protection and management to operate safely and efficiently. This is.

Battery management system (BMS) is technology dedicated to the oversight of a battery pack, which is an assembly of battery cells, electrically organized in a row x column matrix configuration to enable delivery of targeted range of voltage and current for a duration of time against expected load.

Battery Protection Circuit Modules (PCMs), also known as Battery Management Systems (BMS), are critical components in modern rechargeable battery systems. Found in lithium-ion/polymer batteries, electric vehicles, and energy storage systems, these circuits ensure safety, optimize performance, and.

A BMS, short for Battery Management System, is an electronic control unit that monitors and manages the operation of a lithium battery. It ensures the battery works within safe limits, prevents damage from extreme conditions, and maximizes the lifespan of the cells. Think of it as the “brain” of.



It is a sophisticated electronic system that manages rechargeable batteries, such as lithium-ion batteries, by diligently monitoring their state, calculating secondary data, reporting that data, protecting the battery, controlling its environment, and balancing it. This comprehensive management is.



Introduction to the functions of lithium battery bms



[Battery Management System \(BMS\) Detailed Explanation: ...](#)

Battery Management System (BMS) is the "intelligent manager" of modern battery packs, widely used in fields such as electric vehicles, energy storage stations, and consumer ...

[OVERVIEW OF BMS \(BATTERY MANAGEMENT SYSTEM\)](#)

In this article, we are discussing the Importance and function of the Battery Management system and how it works and protect the Battery. What is a BMS system? What ...



[Working Principles and Core Functions of Battery BMS](#)

Found in lithium-ion/polymer batteries, electric vehicles, and energy storage systems, these circuits ensure safety, optimize performance, ...

[Battery Management Systems for Lithium-Ion Packs](#)

Understanding these key functions of a BMS is critical for anyone dealing with lithium-ion battery packs. With the right system in place,



you'll optimize safety, ...

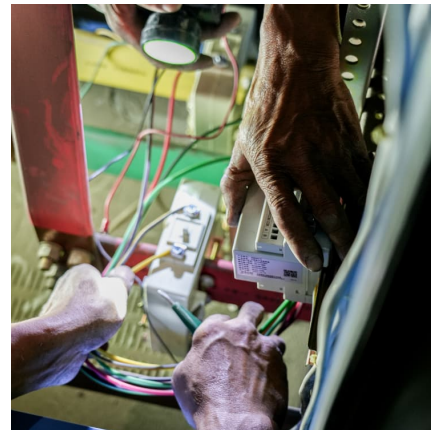


[What is Battery Management System \(BMS\)?](#)

A battery management system, or BMS for short, is an electrical system that regulates and maintains a battery's performance. By regulating several factors, including ...

Function introduction and analysis of BMS of Lithium Battery

Function introduction and analysis of BMS of Lithium Battery Due to the characteristics of lithium battery itself, battery management system (BMS) must be added. ...



[How Battery Management Systems \(BMS\) Prevent Battery ...](#)

To maximize performance and safety, a Battery Management System (BMS) is a critical battery system component. The BMS monitors and manages various aspects of ...





Battery Management System---BMS - JMBatteries

Generally speaking, BMS needs to achieve nine major functions, including voltage and current detection of individual batteries, power calculation, and balance ...



An Overview of Electric Vehicle Battery Management System ...

In the case of multi-cell batteries, the battery management system also provides for cell balancing function, to manage that different battery cells have the same charging and discharging ...

Understanding the Role of the BMS in Modern Lithium Batteries

The Battery Management System is an electronic circuit board built into or attached to a lithium battery pack. Its primary function is to monitor, manage, and protect the battery cells during ...



What is a BMS Board? The Key to Efficient Battery Management

1. Introduction to BMS Boards A Battery Management System (BMS) board is a critical component in modern energy storage systems, ensuring optimal performance, safety, ...



Decoding BMS: Your Guide to Choosing the Perfect Battery ...

Introduction: Choosing the right Battery Management System (BMS) is crucial for the optimal performance and safety of your lithium-ion battery pack. In this guide, we'll delve into the key ...



What Is BMS on a Lithium Battery? A Complete Guide to Its Role

A BMS, short for Battery Management System, is an electronic control unit that monitors and manages the operation of a lithium battery. It ensures the battery works within ...

[Battery Management System Knowledge Paper on](#)

As India steps closer towards becoming a manufacturing hub of lithium-ion batteries and its different components, developing an understanding of Li-ion battery component becomes ...





Battery Management Systems (BMS)

A Battery Management System (BMS) is an electronic system that manages and monitors rechargeable batteries, ensuring their safe and efficient operation. It consists of hardware and ...

[DelftX: Battery Management Systems \(BMS\) and Pack Design](#)

Explore the vital role of Battery Management Systems (BMS) in ensuring the performance, safety, and longevity of lithium-ion battery packs. This course is designed for engineers, researchers, ...

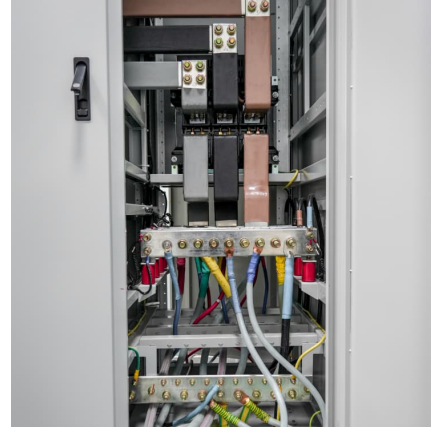


[Introduction to battery-management systems](#)

This course will provide you with a firm foundation in lithium-ion cell terminology and function and in battery-management-system requirements as needed by ...

[Introduction to the types and functions of battery](#) ...

The Charging Principle of Lithium Battery
Chargers The charging principle of battery chargers for lithium batteries involves delivering a controlled amount of ...



[BMS for Lithium-Ion Battery: Essential Guide](#)

Discover the crucial role of a BMS for lithium-ion batteries in ensuring safety, performance, and longevity. Learn about standard vs smart BMS options.

Battery Management System

A battery management system (BMS) is defined as an essential component in a battery pack that monitors and controls the battery's temperature, voltage, and charging/discharging processes, ...



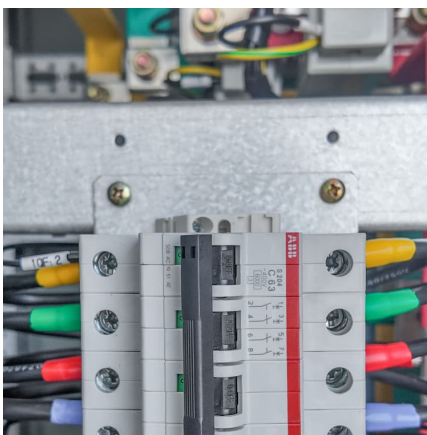
[What is a Battery Management System \(BMS\)? -](#)

Here, the term "battery" implies the entire pack; however, the monitoring and control functions are specifically applied to individual cells, or ...



Battery Management System and its Applications , Wiley Online ...

In Battery Management System and its Applications, readers can expect to find information on: Core and basic concepts of BMS, to help readers establish a foundation of ...



[Overview of BMS \(Battery management system\)](#)

In this Article, we are discussing about Importance and function of Battery Management system how it works and protect the Battery. Introduction BMS is ...

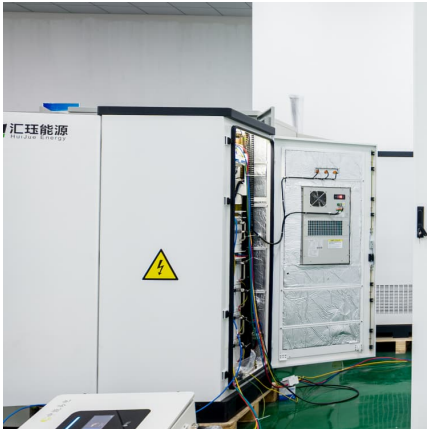
[Introduction to battery-management systems](#)

This course will provide you with a firm foundation in lithium-ion cell terminology and function and in battery-management-system requirements as needed by ...



Lithium Battery BMS Introduction (Battery Management System)

The Lithium Battery BMS introduction & Functions, the article carefully introduces the working principle and necessity of the main core functions of BMS;



[Battery Management System , Functions & Building ...](#)

Understand Battery Management Systems (BMS): Explore how they work, key building blocks, and functions for efficient battery performance and safety.



What Is BMS on a Lithium Battery? A Complete Guide to Its Role

Introduction: What Is BMS on a Lithium Battery? A BMS, short for Battery Management System, is an electronic control unit that monitors and manages the operation of ...

Introduction to the Protection Function of Polymer Lithium Battery BMS.

The BMS battery management system may collect, process, and store important information during the operation of the battery pack in real time, exchange information with ...





[Introduction to Lithium Battery Management System \(BMS\)](#)

BMS can achieve functions such as balanced charging, temperature control, and charging protection for batteries, thereby improving their efficiency and safety performance.

Contact Us

For catalog requests, pricing, or partnerships, please visit:
<https://www.conrad.edu.pl>