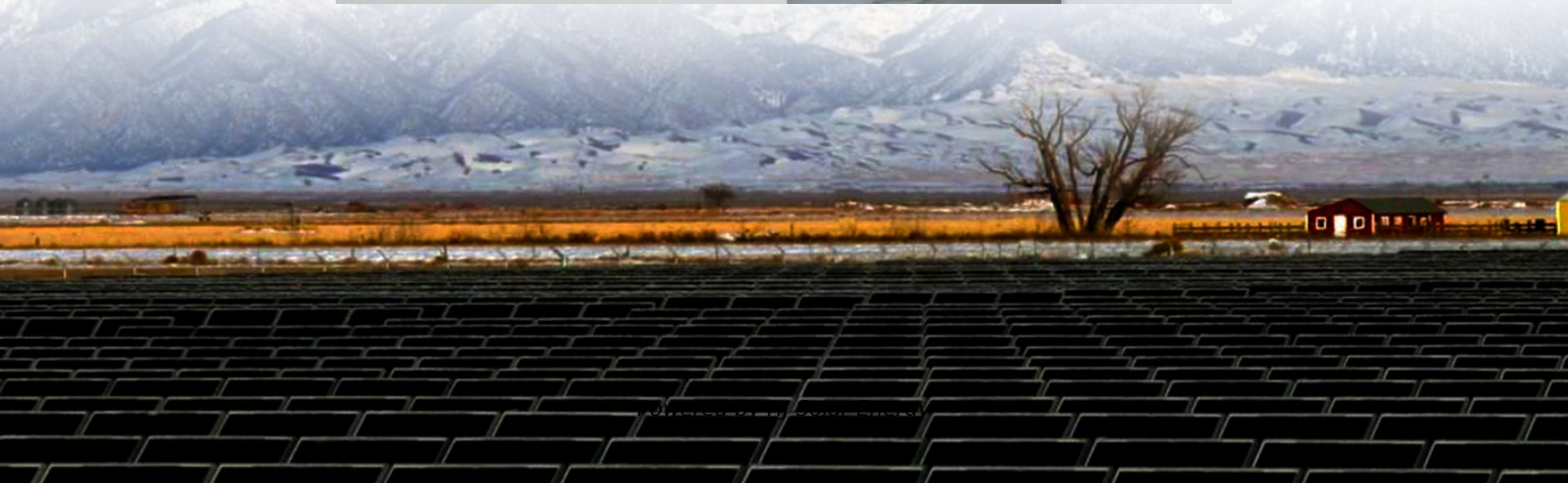


Is the energy storage power station industrial land or construction land





Overview

Battery Energy Storage Systems (BESS) are rapidly emerging as a critical component of the renewable energy landscape. As the demand for clean and reliable energy grows, BESS plays a crucial role in ensuring grid stability and optimizing energy utilization.

Battery Energy Storage Systems (BESS) are rapidly emerging as a critical component of the renewable energy landscape. As the demand for clean and reliable energy grows, BESS plays a crucial role in ensuring grid stability and optimizing energy utilization.

It stores excess electricity generated from renewable sources like solar and wind power for later use when demand is high, or supply is low. BESS operates on a simple principle: it charges when electricity is abundant, typically during periods of low demand or high renewable energy generation. When.

What is the land use period for energy storage power stations?

The land use period for energy storage power stations generally varies based on several factors. 1. The type of technology utilized, such as pumped hydroelectric storage or battery storage systems, significantly influences land use.

When we talk about energy storage power station project land area, we're not just discussing dirt and concrete. This topic matters to: Fun fact: The average 100MW lithium-ion battery farm needs about 2-5 acres - roughly equivalent to storing Manhattan's evening energy demand in Central Park's Sheep.

attenn energy storage system in power system will be greatly improved. Espec focusing on their construction, operation, and maint wer storage like lithium-ion batteries is also on a fast growth track. The la d industrial energy storage and rcial energy storage systems and energy storage power y.

To successfully prepare for the construction of an energy storage power station, several critical elements must be taken into account. 1. Site assessment, 2. Regulatory compliance, 3. Engineering design, 4. Financial



analysis. Site assessment is essential to determine the most suitable location for.

This energy storage power station construction guide is your backstage pass to building systems that'll make Tesla's Powerwall look like a AA battery. Global energy storage deployments surged by 89% in 2023 (BloombergNEF), with projects ranging from California's 409MW Moss Landing facility to. Why should you lease a site for a battery energy storage system?

Land is the most important resource for the development of battery energy storage systems. Several factors must be considered when considering the leasing of a site for a BESS project, some of the most important being: The size of the land required for a BESS project depends on the capacity of the battery system.

What is a battery energy storage system?

Battery Energy Storage Systems (BESS) are rapidly emerging as a critical component of the renewable energy landscape. As the demand for clean and reliable energy grows, BESS plays a crucial role in ensuring grid stability and optimizing energy utilization. Land requirements are a significant factor in the development of BESS projects.

How do utilities encourage energy storage?

Utilities often offer incentives to encourage the adoption of energy storage systems to improve grid reliability and balance supply and demand. These incentives may include demand response programs, time-of-use rate structures, or capacity market participation.



Is the energy storage power station industrial land or construction



Approval and progress analysis of pumped storage power stations ...

It summarizes the current development mode and provides an analysis of pumped storage development in both Central China and China as a whole. The relevant ...

Energy Storage Power Station Construction Guide: Key Steps ...

Site Selection: It's Not Just About Cheap Land
Choosing where to build your energy storage power station isn't like picking a Starbucks location. Get this wrong, and you might as well be ...



Morro Bay Energy Storage Project

Largest competitive power generator in the US with a capacity of ~39,000 MWs, enough to power 20 million homes Diverse portfolio of assets, including natural gas, nuclear, solar and battery ...

[Industrial and commercial energy storage power station](#)

This article explores the construction, operation, and maintenance management of industrial and commercial energy storage power stations. It



emphasizes the ...



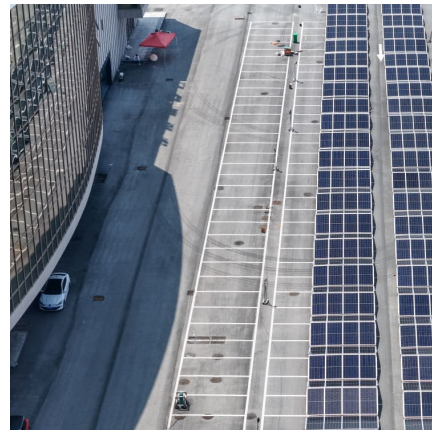
Report Provides Overview of Planning, Zoning Issues for Battery Storage

A new report from Pacific Northwest National Laboratory provides an overview of battery energy storage systems from a land use perspective and describes the implications ...



Energy Infrastructure Siting and Permitting Commission ...

A critical component to combatting climate change is electrification - using electricity to power electric heat pumps for heating and cooling, electric vehicles to get around, ...



Energy Storage Exceeds 12GWh! Gansu Releases List of Major ...

On February 28, the Gansu Provincial Development and Reform Commission released the "List of Major Provincial Construction Projects for 2025," which includes over 20 ...





Energy storage power station uses industrial land

A battery energy storage system (BESS) or battery storage power station is a type of energy storage technology that uses a group of batteries to store electrical energy. Battery storage is ...



Anhui Province: Construction of the First 100-megawatt ...

According to the previous tender announcement, the energy storage power station is equipped with a total of 92 1.1MW/2.2MWh energy storage battery containers, and ...

Energy Storage Power Station Project Land Area: What You ...

When we talk about energy storage power station project land area, we're not just discussing dirt and concrete. This topic matters to:



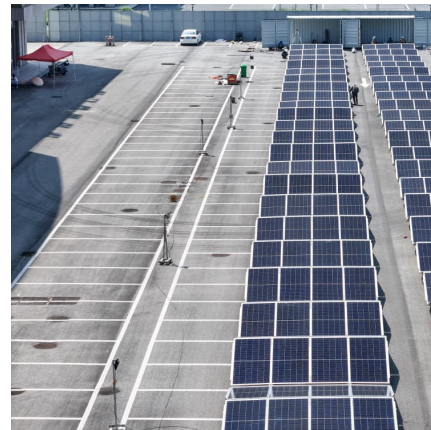
Energy storage station land acquisition cost analysis form

The civil work for a Battery Energy Storage System (BESS) plant constitutes a significant portion of the total capital cost, construction of production buildings, storage facilities, safety ...



Energy storage power station uses industrial land

A battery energy storage system (BESS) or battery storage power station is a type of energy storage technology that uses a group of batteries to store electrical energy. ...



PLANNING & ZONING FOR BATTERY ENERGY ...

The purpose of this guide is to help Michigan local government officials and planners understand the current landscape of BESS deployment. It aims to empower them to effectively incorporate ...

Energy Storage Power Station Construction Guide: Key Steps ...

Choosing where to build your energy storage power station isn't like picking a Starbucks location. Get this wrong, and you might as well be building a sandcastle during high tide.





Industrial Energy Storage Review

This report examines the different types of energy storage most relevant for industrial plants; the applications of energy storage for the industrial sector; the market, business, regulatory, and ...

[Land use of energy storage power station project](#)

In 2020, renewable energy sources provided about 29% of the world's primary energy. However, the intermittent nature of renewable power, calls for substantial energy storage. Pumped ...



[Ningxia 100MW/200MWh Shared Energy Storage](#)

On March 2, 2024, the groundbreaking ceremony for the Ningxia Yiyang Green Storage 100MW/200MWh Shared Energy Storage Power Station project was ...

[Battery Storage Land Lease Requirements & Rates 2024](#)

Battery Energy Storage Systems (BESS) are rapidly emerging as a critical component of the renewable energy landscape. As the demand for ...



Configuration and operation model for integrated energy power station

Considering the lifespan loss of energy storage, a two-stage model for the configuration and operation of an integrated power station system is established to maximize ...



WINDEXchange: Land-Based Wind Energy

The United States boasts abundant land-based, utility-scale wind energy resources. According to a 2022 assessment, the nation has 2.2-15.1 terawatts of land-based resource potential, ...



How much is the land cost for energy storage power ...

1. The land cost for energy storage power stations varies significantly based on location, type of energy storage technology utilized, local ...





[PUMPED STORAGE PLANTS - ESSENTIAL FOR INDIA'S ...](#)

Ministry of Power has, in April 2023, notified the guidelines to promote pumped storage projects. The Report on "Pumped Storage Plants - essential for India's Energy Transition" recommends ...



Land-Use Requirements for Solar Power Plants in the United ...

We identify two major classes of solar plant land use--direct impact (disturbed land due to physical infrastructure development) and total area (all land enclosed by the site ...

Energy Storage Power Station Project Land Area: What You ...

Who Cares About Battery Storage Real Estate? When we talk about energy storage power station project land area, we're not just discussing dirt and concrete. This topic ...



[Energy storage power station land use standards](#)

The increasing mandates and incentives for the rapid deployment of energy storage are resulting in a boom in the deployment of utility-scale battery energy storage ...



PSC Authorizes Construction of 100 MW Battery Storage ...

The 100 MW East River Energy Storage System will hold enough electricity to power more than 16,000 average-sized homes for several hours, or enough to power the World Trade Center for ...



[Industrial and commercial energy storage power station](#)

This article provides an overview of industrial and commercial energy storage power stations, focusing on their construction, operation, and maintenance ...

Battery Energy Storage System (BESS) Site Requirements You ...

Battery energy storage systems (BESS) are becoming increasingly popular as a way to store renewable energy, provide backup power, and manage grid demand. But before ...





Contact Us

For catalog requests, pricing, or partnerships, please visit:
<https://www.conrad.edu.pl>