

# Kwh solar panel size chart





## Overview

---

Learn how to choose the ideal solar panel size for your home with charts, standard dimensions, and tips to calculate size per kW in this complete guide.

Learn how to choose the ideal solar panel size for your home with charts, standard dimensions, and tips to calculate size per kW in this complete guide.

Learn how to choose the ideal solar panel size for your home with charts, standard dimensions, and tips to calculate size per kW in this complete guide. Choosing the right solar panel size can feel like a puzzle, as it is a key part of how solar energy works. Roof shapes, power goals, and budget.

There are 3 standardized sizes of solar panels, namely: 60-cell solar panels size. The dimensions of 60-cell solar panels are as follows: 66 inches long, and 39 inches wide. That's basically a 66×39 solar panel. But what is the wattage?

That is unfortunately not listed at all. 72-cell solar panel.

Solar panels come in various standard sizes, typically measured in inches or millimeters. These sizes can significantly influence their compatibility with different mounting systems and roof spaces. Therefore, understanding these dimensions is essential for effective planning and installation.

Most residential solar panels measure between 65 to 75 inches long and 39 to 41 inches wide, delivering power outputs ranging from 250 to 400 watts per panel. Understanding these dimensions is crucial for homeowners planning their solar installation, as panel size directly impacts system.

Solar panel sizes are measured in two ways: watt output and physical dimensions. Physical dimensions refer to the height, length and width of the solar array. The wattage refers to how much power the panel can produce. Regular solar panels come in 60 cell panels or 72 cell panels. Each cell is 6 x.

The kWh solar panel size chart helps you understand how different sizes impact energy production. The chart displays various solar panel sizes and their corresponding energy output in kilowatt-hours (kWh). It gives you an



idea of how much energy solar panels of varying sizes can produce over time. What is the kWh solar panel size chart?

The kWh solar panel size chart helps you understand how different sizes impact energy production. The chart displays various solar panel sizes and their corresponding energy output in kilowatt-hours (kWh). It gives you an idea of how much energy solar panels of varying sizes can produce over time, respectively.

What is a solar system size chart?

A solar system size chart helps you find the right size. Key factors to determine solar panel sizing are sunlight exposure, roof space and budget. If you are planning to install a solar system for your home, calculate your daily energy requirements and match them with panel efficiency.

What is a solar cable size chart?

The chart displays various solar panel sizes and their corresponding energy output in kilowatt-hours (kWh). It gives you an idea of how much energy solar panels of varying sizes can produce over time, respectively. The solar cable size chart ensures the proper setup of your solar system.

What is a solar cell size chart?

The solar cell size chart is a handy guide to understanding the various cell sizes in solar panels. Found in low-wattage panels. They are easy to install but offer low efficiency. Common size. Balances efficiency and is easy to install. Best for residential use. Used in high-efficiency panels. These cells optimise energy.

How do I choose a solar panel size?

Key factors to determine solar panel sizing are sunlight exposure, roof space and budget. If you are planning to install a solar system for your home, calculate your daily energy requirements and match them with panel efficiency. For business, you will have to install large systems, as energy demands are high for commercial use.

What is a solar panel size chart?

A solar panel size chart helps figure out how many panels you need based on daily power use. For example, Australian homes use 11-23 kWh daily. A good



inverter size ensures your solar system runs smoothly and efficiently. The weight and power of panels matter a lot.



## Kwh solar panel size chart

---



### [How to Size a Solar System \[Step-by-Step Guide\]](#)

Learn how to calculate the size of a solar system for your home in six steps, based on your monthly kWh usage, sun hours, panel efficiency and offset goal. Find out how many solar ...

### **Solar Panel Size Chart: Find the Perfect Fit for Your Home or ...**

The chart displays various solar panel sizes and their corresponding energy output in kilowatt-hours (kWh). It gives you an idea of how much energy solar panels of varying sizes can ...



### [Standard Solar Panel Sizes And Wattages \(100W ...](#)

Find out the average dimensions and areas of solar panels from 100W to 500W wattage. Compare the typical sizes of 60-cell, 72-cell, and 96-cell solar panels and how many you can fit on your roof.

### [The best solar panel size guide every homeowner needs](#)

Learn how to choose the ideal solar panel size for your home with charts, standard dimensions, and tips to calculate size per kW in this complete



guide.



### [A Comprehensive Solar Panel Size Chart: Find the ...](#)

Discover the perfect fit for your energy needs with our comprehensive solar panel size chart. Navigate solar panel dimensions for optimal efficiency.

### [Standard Solar Panel Sizes And Wattages \(100W-500W ...](#)

These are the practical solar panel dimensions by wattage from solar panels that are actually sold on the market (made by SunPower, Panasonic, QCells, REC Solar, Renogy, Bluetti, and so on).



### **Perfect Solar Panel Sizes for Your Home (Expert Sizing Guide)**

Understanding these dimensions is crucial for homeowners planning their solar installation, as panel size directly impacts system efficiency, roof coverage, and overall energy ...



### [Solar Panel Size Guide \(with 4 Charts\)](#)

The chart displays various solar panel sizes and their corresponding energy output in kilowatt-hours (kWh). It gives you an idea of how much energy solar panels of varying sizes can produce over time, respectively.

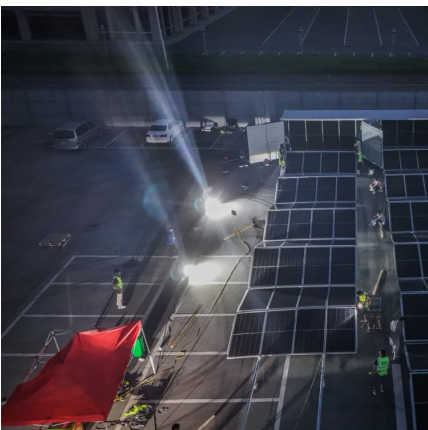


### [Solar Panel Size Chart - SizeChartly](#)

Matching the solar panel size to your energy consumption needs is key to achieving the desired level of energy production and cost savings. Calculate your energy usage to select a panel size ...

### [Solar Panel Sizes and Wattage Explained](#)

Enter your yearly kWh usage, solar hours per day, and the percentage of your electricity bill to offset into the Sunwatts calculator to find the exact system size.



### **A Comprehensive Solar Panel Size Chart: Find the Right Fit**

Discover the perfect fit for your energy needs with our comprehensive solar panel size chart. Navigate solar panel dimensions for optimal efficiency.



## Contact Us

---

For catalog requests, pricing, or partnerships, please visit:  
<https://www.conrad.edu.pl>