

# Lithium iron phosphate battery energy storage cabinet specifications





## Overview

---

The SafeCubeA100A50PT Integrated Energy Storage Cabinet is equipped with 3.2V/100Ah lithium iron phosphate batteries, supporting a maximum energy storage capacity of 102kWh. The voltage range is 448-584V, with dimensions of 2400x1100x2450mm.

The SafeCubeA100A50PT Integrated Energy Storage Cabinet is equipped with 3.2V/100Ah lithium iron phosphate batteries, supporting a maximum energy storage capacity of 102kWh. The voltage range is 448-584V, with dimensions of 2400x1100x2450mm.

MK's Li-battery storage system features high-voltage output for enhancing energy management efficiency. With its scalable and anti-corrosion capabilities, MK's battery system can meet varying scale project requirements. It is suitable for various environmental conditions, making it an ideal.

HBMS100 Energy storage Battery cabinet is consisted of 13 HBMU100 battery boxes, 1 HBCU100 master control box, HMU8-BMS LCD module, cabinet and matched wiring harness, etc. The HBMU100 battery box and HBCU100 master control box communicate with each other via CANBUS. The HBMS100 battery box.

The ESS-GRID Cabinet series are outdoor battery cabinets for small-scale commercial and industrial energy storage, with four different capacity options based on different cell compositions, 200kWh, 215kWh, 225kWh, 241kWh, etc. They can be widely used in farms, animal husbandry, hotels, schools.

ATEN Battery Racks are a reliable, long cycle life, modular, and scalable lithium iron phosphate (LFP) battery energy storage system (BESS) building block for commercial and industrial applications. Each ATEN Rack comes with: ATEN Battery Racks are easily expandable: simply install more packs as.

BatteryEVO is at the front of this transition, pioneering the advanced LFP technology, lithium iron phosphate, the chemistry that commands unmatched safety, cycle life. performance stability. Our flagship product — the Elephant



Energy Storage System Cabinet — delivers the promise of twice the.

AZE's lithium battery energy storage system (BESS) is a complete system design with features like high energy density, battery management, multi-level safety protection, an outdoor cabinet with a modular design. Stationary power storage systems have experienced strong growth in recent years. In. What is the energy density of lithium iron phosphate batteries?

Wu Kai also said that the energy density of lithium iron phosphate batteries using CTP3.0 technology can reach 160Wh/kg, and the ternary lithium battery can reach 250Wh/kg. It is worth mentioning that, under the same conditions, the power of products using CTP3.0 technology can be 13% higher than that of the 4680 battery system.

Are lithium iron phosphate batteries the future of solar energy storage?

Let's explore the many reasons that lithium iron phosphate batteries are the future of solar energy storage. Battery Life. Lithium iron phosphate batteries have a lifecycle two to four times longer than lithium-ion. This is in part because the lithium iron phosphate option is more stable at high temperatures, so they are resilient to over charging.

What are lithium iron phosphate batteries (LiFePO4)?

However, as technology has advanced, a new winner in the race for energy storage solutions has emerged: lithium iron phosphate batteries (LiFePO4). Lithium iron phosphate use similar chemistry to lithium-ion, with iron as the cathode material, and they have a number of advantages over their lithium-ion counterparts.

What is the capacity of a lithium iron phosphate battery?

The Sungrow high-voltage SBR lithium iron phosphate battery has a storage capacity between 9.6 kWh and 102.4 kWh, depending on the number of modules. A single module has a capacity of 9.6 kWh, a nominal voltage of 192 V, and DC power of 5.76 kW.

What is the Aten LFP battery rack?

The ATEN LFP Battery Rack is the Building Block to all ATEN Series BESS Battery Energy Storage Systems. Racks Utilize the ATEN P9 9.2kWh Battery Pack.



## Lithium iron phosphate battery energy storage cabinet specification

---



### [ATEN R138 LFP Battery Rack System for C& I...](#)

ATEN Battery Racks are a reliable, long cycle life, modular, and scalable lithium iron phosphate (LFP) battery energy storage system (BESS) building block for ...

### [IP55 ESS Outdoor Cabinet Energy Storage System](#)

AZE's commercial energy storage utilizes a high-density LFP Battery, which is a type of Lithium-ion battery that uses iron phosphate as the cathode material. ...



### [48v 100Ah 5 kWh battery energy storage](#)

EGbatt 5 kWh Lithium-Iron Phosphate Battery (LiFePO4), combining superior lithium-iron phosphate technology to provide a better solution to solar energy ...

## PowerRack

PowerRack system is a powerful and scalable Lithium Iron Phosphate Energy Storage System for a wide variety of energy storage applications (heavy traction, stationary, industry, UPS, ...



[SmartGen HBMS100 Energy storage Battery cabinet](#)

HBMS100 Energy storage Battery cabinet is a battery management system with cell series topology, which can realize the protection of over charge/discharge ...



**Vertiv EnergyCore Battery System**

EnergyCore Battery Cabinet The Vertiv EnergyCore is the first lithium-ion battery cabinet engineered specifically for data center use. Its compact design, proven safety features, and ...



[Lithium Iron Phosphate \(LiFePO4\) Battery](#)

Lithium Iron Phosphate (LiFePO4) Battery Features of LiFePO4 Battery Longer Cycle Life: Offers up to 20 times longer cycle life and five times longer float/calendar life than lead acid battery, ...





## 1 MW/ 1 MWh energy storage system

1 MWh and construction scale of 1 MW/1 MWh. It includes a 1.04 MWh lithium iron phosphate battery pack carried by a 20-foot prefabricated container with dimensions of 6058 mm x 2438 ...



## [200kWh-241kWh High Voltage Lithium Battery Energy ...](#)

Explore the BSLBATT ESS-GRID Cabinet Series, an industrial and commercial energy storage system available in 200kWh, 215kWh, 225kWh, and 245kWh ...

## [IMPROVE 48V \(51.2V\) 200Ah Cabinet Type Energy ...](#)

IMP 48V Battery System supports solar energy storage of both commercial and industrial purposes. The system is built from integration of LiFePO4 Basic ...



## 1 MWh Battery Storage Power Plant

Why is lithium iron phosphate battery the best solution for 1 MWh energy storage? Lithium iron phosphate battery has high energy density, long service life, high ...



### [Solar + Storage Battery Buyer's Guide 2022 . Solar ...](#)

Cut to 2022, and, according to the manufacturers we reached out to for this year's Buyer's Guide, lithium iron (ferrous) phosphate (LFP) has ...



### [BUILD A SMARTER BATTERY, NOT A BIGGER BATTERY](#)

PACKAGES Storz Power AI+ packages boast flexible home energy options that can power just your essentials or your whole home, regardless of size, in the event of a power ...

### [Energy Storage Systems . Ecube Power](#)

eQube is meeting the global demand for safe and reliable battery power by creating the world's best-in-class UL9540A, UL9540, IEC certified 285Ah (1P), ...





### **ESS-GRID Cabinet Brochure EN-250401**

The ESS-GRID Cabinet series are outdoor battery cabinets for small-scale commercial and industrial energy storage, with four different capacity options based on different cell ...

### [Lithium Phosphate Battery Price-Lithium Phosphate ...](#)

A Lithium Iron Phosphate Battery For Home Energy Storage Systems Can Save Electricity Bills During Peak Periods, His Electricity Comes From Solar Panels ...



### [6 Battery Energy Storage Systems -- Lithium . UpCodes](#)

[C] 4-8 There are no current commercially available lithium battery chemistries that provide a significantly different margin of fire safety over any other lithium battery chemistry. This ...

### [50kw 100kwh all in one cabinet bess battery energy ...](#)

Energy Cube 50kW-100kWh C& i ESS integrates photovoltaic inverters and a 100 kWh energy storage system. It includes battery cells, Battery Management ...



### Standard Specifications for Lithium Battery Energy Storage ...

Samsung UL9540A Lithium-ion Battery Energy Storage System The Samsung SDI 128S and 136S energy storage systems for data center application are the first lithium-ion battery



### Comprehensive Guide to Rack-Mounted Lithium Batteries for Energy

As the demand for high-efficiency energy storage systems grows, rack-mounted lithium batteries are becoming increasingly popular in industrial and residential applications. This article ...



### [Reliable Power: LiFePO4 Battery & LiFePO4 cells](#)

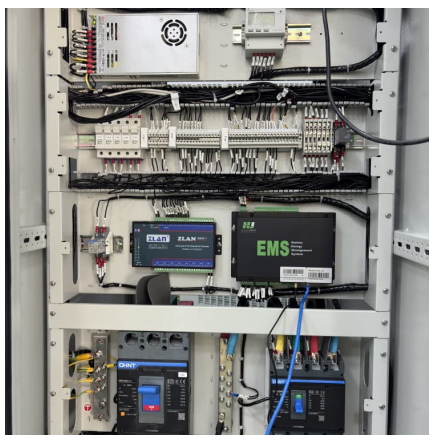
The LiFePO4 battery, which stands for lithium iron phosphate battery, is a high-power lithium-ion rechargeable battery intended for energy storage, electric ...





### L3 Series Limitless Lithium(TM) Battery Energy Storage ...

The Sol-Ark® L3 Series Lithium(TM) battery energy storage system (BESS) offers scalability, reliability, and energy resilience essential for modern commercial ...



### [Lithium-iron Phosphate \(LFP\) Batteries: A to Z ...](#)

Lithium-ion batteries have become the go-to energy storage solution for electric vehicles and renewable energy systems due to their high ...

### [SmartGen HBMS100 Energy storage Battery cabinet](#)

SmartGen HBMS100 Energy storage Battery cabinet. Energy Storage Cabinet. Technical Parameters: Voltage Range (582.4~759.2)VDC Rated Voltage 665.6VDC Cell Specification ...



### [Residential Energy Storage Battery Rack mounted](#)

Leoch rack-mounted lithium battery are designed for residential energy storage. Modular design, easy to install, efficient energy storage, stable ...



### Pytes V5° Battery: A Solution For Home Energy Storage

Speaking of lithium batteries, then we will introduce to you PYTES lithium iron phosphate battery - a new lithium iron phosphate battery - V5°. V5° is a new ...



### **I& C Energy Storage Cabinet**

JNES100K-232kWh-V1 series I& C Energy Storage Cabinet JNES100K-232kWh-V1 Product Introduction Combines lithium iron phosphate battery systems, bidirectional inverter systems, ...



## **Contact Us**

---

For catalog requests, pricing, or partnerships, please visit:  
<https://www.conrad.edu.pl>