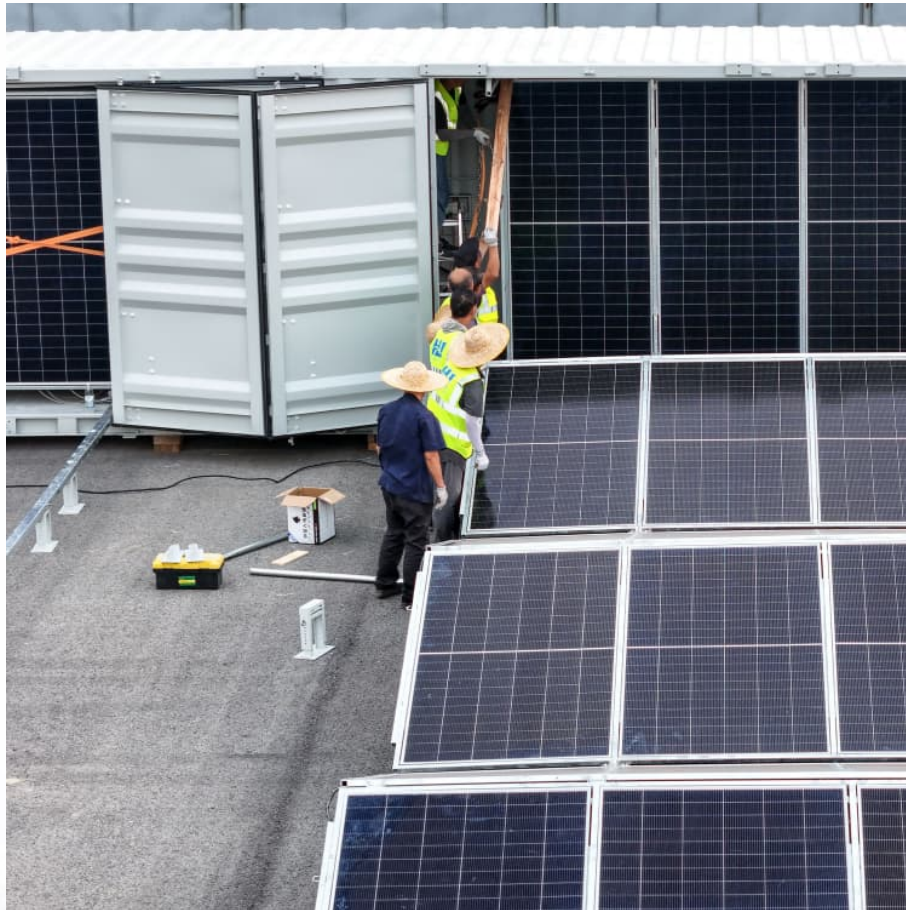


Minn kota battery charger solid yellow light





Overview

A flashing yellow LED signifies that the battery is charging in Absorption Mode, which means the battery was above 75% when the charge began. The solid yellow you observe indicates the bulk stage prior to reaching 75% capacity. There's no need for concern.

A flashing yellow LED signifies that the battery is charging in Absorption Mode, which means the battery was above 75% when the charge began. The solid yellow you observe indicates the bulk stage prior to reaching 75% capacity. There's no need for concern.

A solid RED LED indicates there is an issue with the battery connection. A flashing RED LED indicates an error. A solid YELLOW LED indicates the charger is in Bulk charging. A flashing YELLOW LED indicates the charger is in Absorption Mode. A flashing GREEN LED indicates battery is fully charged.

One of the biggest reasons why the yellow light on your Minn Kota charger won't go off is because of defective batteries. These yellow lights on your unit represent the progress of charging and won't go off until the batteries are fully charged. So, if you've had the batteries plugged in for an.

GREEN (100%): Blinking Green LED indicates battery is fully charged in Float Mode and ready to use. Solid Green LED indicates battery is fully charged in long term Float Mode and ready to use. RED: A solid red LED indicates there is an issue with a connection. A blinking Red LED indicates an error.

A flashing yellow LED signifies that the battery is charging in Absorption Mode, which means the battery was above 75% when the charge began. The solid yellow you observe indicates the bulk stage prior to reaching 75% capacity. There's no need for concern. Once your LEDs turn green, it indicates.

So, what are the Minn Kota battery charger problems?

If the battery isn't past the guarantee, there might be some common problems. For example, the less charging current can be responsible for this issue. Then the green light indicator can keep on blinking. Sometimes the



charger might keep on.

A solid RED LED indicates there is an issue with the battery connection. A flashing RED LED indicates an error (see the troubleshooting below). YELLOW LED indicates the progress of charging. A flashing YELLOW LED indicates the battery is in the Bulk Charging stage. A solid YELLOW LED indicates the. Why is there a yellow light on my Minn Kota Charger?

The yellow light staying on when using the Minn Kota charger can indicate normal functionality in bulk mode. However, it can also be a sign of some wiring or battery issues.

How does Minn Kota multi-stage charging work?

Minn Kota's Multi-Stage Charging delivers a fast, precise charge profile by automatically controlling current and voltage without overcharging your batteries. Bulk: During this stage, the charger delivers full current until the battery reaches ~75% charge (YELLOW LED) is lit to indicate the battery is charging in the Bulk Mode.

How do I know if my Minnkota battery charger is charging?

There has been discussion in the past about the "light codes" on MinnKota battery chargers. Hope this helps. A GREEN power light is lit to indicate AC power is applied. A YELLOW light is lit for each bank to indicate the battery is charging. A GREEN light is lit for each bank to indicate the battery is fully charged and in maintenance mode.

Why is my Minn Kota battery not charging?

Check the fluid in the battery and add fluid if necessary. If the battery voltage does not rise above 10.5 volts in 3 hours, or if the absorption voltage does not increase to 14.4 volts (at 77F), the charger bank will shut down and will not charge. The battery should be tested. If you still have issues, contact Minn Kota Technical Support.

Is Minn Kota a reputable trolling motor company?

Minn Kota is one of the best trolling motor companies. However, they do have some minor battery charger and talon problems. Despite these issues, they remain a popular choice among anglers.

What does a yellow light on a car charger mean?



A yellow light on a Minn Kota battery charger indicates that it is in abort mode. This means the charger's output is shut off. To reset the charger, unplug it from the AC outlet, wait for 1-2 minutes, and then plug it back in. This situation occurs when your battery isn't fully charged.



Minn kota battery charger solid yellow light



[LED Lights on Digital Chargers \(2010-2023\)](#)

A flashing YELLOW LED indicates the charger is in Absorption Mode. A flashing GREEN LED indicates battery is fully charged, in Maintenance Mode and ready to use.

Understanding Minn Kota Charger Lights: Q& A on Flashing Yellow ...

The charger's LED indicators show charging status; solid yellow means normal charge, while flashing suggests voltage irregularities or overheating. Inspect the charger for dirt or moisture, ...



[6 Fixes For Minn Kota Charger Yellow Light Stays On](#)

YELLOW (25%, 50%, 75%): These LEDs indicate the progress of charging GREEN (100%): Blinking Green LED indicates battery is fully charged in Float Mode and ready to use.

[Minn Kota Battery Charger Problems with Solutions](#)

A flashing YELLOW LED indicates the battery is charging in the Absorption Mode. Maintenance: When the battery reaches full charge, the



charger voltage is reduced.

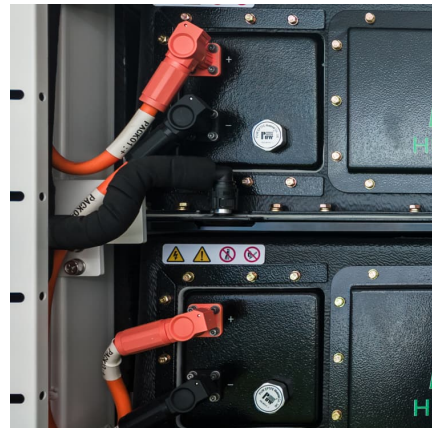


Troubleshooting your Precision Charger (PC 2013-2022) and ...

If you are having issues with your PC and PCL Charger, you can do some basic troubleshooting. The Guide below will provide basic troubleshooting steps for Precision ...

What do the status lights mean on the on-board battery charger?

YELLOW (25%, 50%, 75%): These LEDs indicate the progress of charging GREEN (100%): Blinking Green LED indicates battery is fully charged in Float Mode and ready to use.



[Understanding Minn Kota Charger Lights: Q&A on...](#)

??\$9??. The charger's LED indicators show charging status; solid yellow means normal charge, while flashing suggests voltage irregularities or overheating. Inspect the charger for dirt or moisture, and verify the battery's ...



[Minn Kota Battery Charger Problems with Solutions](#)

Want to know the common Minn Kota battery charger problems Users Might Face? We discussed the problems, probable causes and solutions so give it a read here.



[MinnKota Battery Chargers/Light readout](#)

A YELLOW light is lit for each bank to indicate the battery is charging. A GREEN light is lit for each bank to indicate the battery is fully charged and in maintenance mode.

On board charger question [Archive]

During this stage, the charger delivers full current until the battery reaches ~75% charge. A YELLOW light is lit for each bank to indicate the battery is charging in the Bulk Mode.



MinnKota automatic charger HELP!!!

I know my charger came set for a lead battery from the factory and you have to change the setting manually for a different type. When you plug the charger in I think each ...



LED Lights on Portable Chargers (2007-2023)

A flashing YELLOW LED indicates the battery is charging in the Absorption Mode. Maintenance: When the battery reaches full charge, the charger voltage is reduced.



Contact Us

For catalog requests, pricing, or partnerships, please visit:
<https://www.conrad.edu.pl>