

Power supply measuring energy storage installed capacity





Overview

Storage capacity is typically measured in units of energy: kilowatt-hours (kWh), megawatt-hours (MWh), or megajoules (MJ). You will typically see capacities specified for a particular facility with storage or as total installed capacities within an area or a country.

Storage capacity is typically measured in units of energy: kilowatt-hours (kWh), megawatt-hours (MWh), or megajoules (MJ). You will typically see capacities specified for a particular facility with storage or as total installed capacities within an area or a country.

There are a few key technical parameters that are used to characterize a specific storage technology or system. Those characteristics will determine compatibility of the storage with a proposed application and will also have impact on its economic feasibility. Let us go through some definitions.

As the energy storage industry rapidly evolves, understanding the units and measurements used to describe storage capacity and output is crucial. Energy storage technologies play a pivotal role in balancing energy supply and demand, and various units are used to quantify their capabilities. This.

Let's start with the basics: power storage installed capacity refers to the maximum amount of electricity a system can store and discharge. Think of it as the "gas tank size" for energy systems – whether we're talking about your home solar setup or a massive grid-scale installation. Measured in.

Power capacity or power rating: The maximum amount of power that a battery can instantaneously produce on a continuing basis. It can be compared to the nameplate rating of a power plant. Power capacity or rating is measured in megawatts (MW) for larger grid-scale projects and kilowatts (kw) for. What is power capacity?

Definition: Power capacity refers to the maximum rate at which an energy storage system can deliver or absorb energy at a given moment. •. Units: Measured in kilowatts (kW) or megawatts (MW). •. Significance: Determines the system's ability to meet instantaneous power demands and respond



quickly to fluctuations in energy usage.

What are energy storage units & measurements?

As the energy storage industry rapidly evolves, understanding the units and measurements used to describe storage capacity and output is crucial. Energy storage technologies play a pivotal role in balancing energy supply and demand, and various units are used to quantify their capabilities.

What is energy storage capacity?

Energy storage capacity is measured in megawatt-hours (MWh) or kilowatt-hours (kWh). Duration: The length of time that a battery can be discharged at its power rating until the battery must be recharged. The three quantities are related as follows: $\text{Duration} = \text{Energy Storage Capacity} / \text{Power Rating}$.

Can FEMP assess battery energy storage system performance?

This report describes development of an effort to assess Battery Energy Storage System (BESS) performance that the U.S. Department of Energy (DOE) Federal Energy Management Program (FEMP) and others can employ to evaluate performance of deployed BESS or solar photovoltaic (PV) +BESS systems.

Is there a capacity estimation method for home storage systems?

Now, a large open-access dataset from eight years of field measurements of home storage systems is presented, enabling the development of a capacity estimation method. You have full access to this article via your institution. The global battery energy storage market has grown rapidly over the past ten years.

How is energy storage capacity calculated?

The energy storage capacity, E , is calculated using the efficiency calculated above to represent energy losses in the BESS itself. This is an approximation since actual battery efficiency will depend on operating parameters such as charge/discharge rate (Amps) and temperature.



Power supply measuring energy storage installed capacity

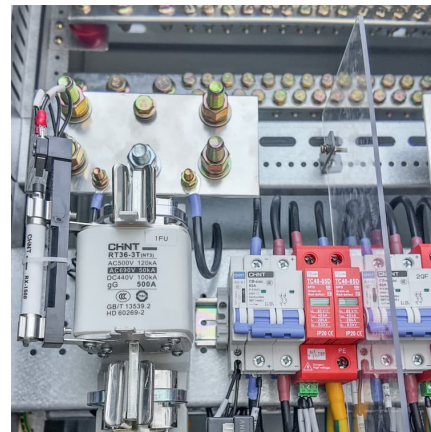


Understanding Power Storage Installed Capacity: Key Factors, ...

Let's start with the basics: power storage installed capacity refers to the maximum amount of electricity a system can store and discharge. Think of it as the "gas tank size" for ...

[Battery Energy Storage System Evaluation Method](#)

This report describes development of an effort to assess Battery Energy Storage System (BESS) performance that the U.S. Department of Energy (DOE) Federal Energy Management Program ...



Comprehensive Guide to Key Performance Indicators of Energy Storage

In large-scale energy storage, capacity directly determines the system's ability to supply power over extended periods. Higher-capacity batteries are ideal for long-duration ...

A simple and effective methodology for sizing electrical energy ...

The methodology was validated using measurement data obtained from two different systems corresponding to: a) a near-zero energy



building with local generation ...

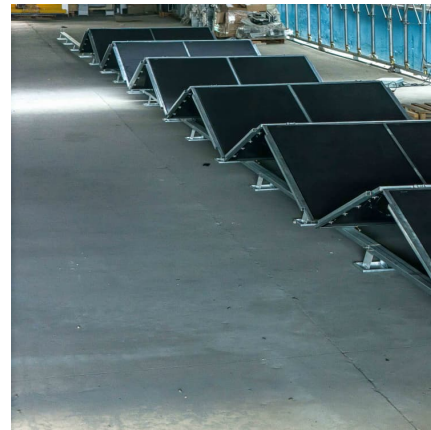


Electricity generation, capacity, and sales in the United States

Energy storage systems for electricity generation have negative-net generation because they use more energy to charge the storage system than the storage system generates. Capacity: the ...

Energy Storage Capacity

Energy storage capacity, useful energy storage capacity The energy storage capacity is the actual parameter determining the size of storage, and it can be decided based on the power and ...



[Data Centers Drive Up Electricity Demand. Causing ...](#)

Exxon Mobil wants to supply natural gas to power generators serving data centers, but only if that electricity can be decarbonized through ...



[DOE ESHB Chapter 16 Energy Storage Performance Testing](#)

1. Introduction Battery energy storage systems (BESSs) are being installed in power systems around the world to improve efficiency, reliability, and resilience. This is driven in part by: ...



Short-Term Energy Outlook

With this month's Short-Term Energy Outlook (STEO), we are now including all types of U.S. electric generating capacity in our forecast. In addition to the capacity series for ...

[What does the installed capacity of energy storage ...](#)

Ultimately, energy storage is a fundamental component of achieving a sustainable, resilient energy future. The exploration of installed ...



[Global Energy Storage Market's Compound Growth ...](#)

According to our calculations, domestic new installed capacity of behind-the-meter energy storage will reach 5.78GW/12.71GWh in 2025, with ...

How Big is a Battery? Understanding



Battery Size, Capacity, and Power

The world's biggest flow battery in China Energy Storage Capacity (kWh or MWh) Battery energy storage capacity is the total amount of energy the battery can store, ...



[Measuring Battery Electric Storage System ...](#)

Energy storage capacity: The amount of energy that can be discharged by the battery before it must be recharged. It can be compared to the output of a ...

Installed Capacity

6 Performance metrics Installed capacity is the most widely disseminated figure regarding new additions to electricity supply. It is the easiest numerical figure for society at large and policy ...



What's the difference between the installed capacity and ...

The U.S. Energy Information Administration (EIA) refers to capacity as the maximum output of electricity that a generator can produce under ideal conditions.

A Comparative Review of Capacity Measurement in Energy ...



This article aims to research the various methods used to estimate the capacity as well as the applications of these measurements aimed at reducing the degradation of the energy storage

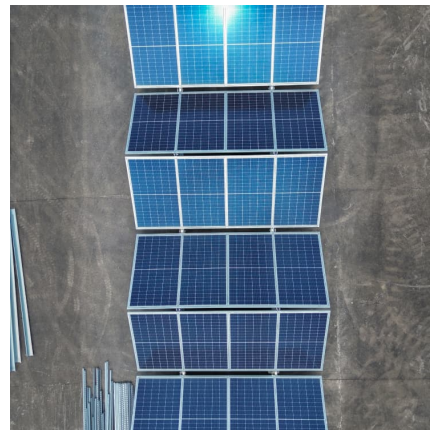


[InfoLink: 222 GWh more energy storage worldwide in ...](#)

The global energy storage market had installed 175.4 GWh of capacity by 2024, with Tesla leading shipments. Europe accounted for 19.1 ...

[Summary of Global Energy Storage Market Tracking ...](#)

Figure 2: Cumulative installed capacity of new energy storage projects commissioned in China (as of the end of June 2023) In the first half of ...



Power supply measuring energy storage installed capacity

This paper presents a novel and comprehensive framework to evaluate the available energy storage capacity, which effectively establishes a bridge between the reliability contribution and ...

What is the installed capacity of energy storage projects?



The installed capacity of energy storage projects refers to the total amount of electrical energy that these systems can store and ...



HANDBOOK FOR ENERGY STORAGE SYSTEMS

FOREWORD e about Singapore's Energy Story. This was about transcending the challenges of the energy trilemma - to keep our energy supply a fordable, reliable and sustainable. He also ...

Understanding Power Storage Installed Capacity: Key Factors, ...

What Exactly Is Power Storage Installed Capacity? Let's start with the basics: power storage installed capacity refers to the maximum amount of electricity a system can ...



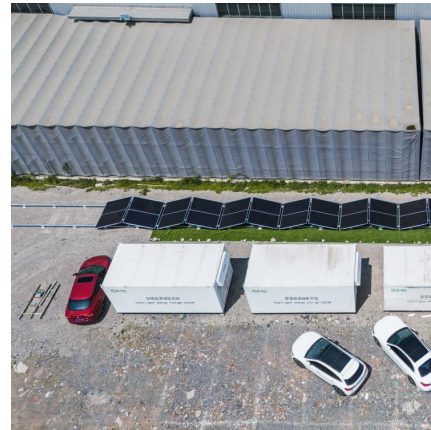
Summary of Global Energy Storage Market Tracking (Q2 2023)

Figure 2: Cumulative installed capacity of new energy storage projects commissioned in China (as of the end of June 2023) In the first half of 2023, China's new ...



Installed Capacity

Also known as nameplate capacity or capacity. The maximum amount of electricity that a generating station (also known as a power plant) can produce under specific conditions ...



[China targets 180GW of installed BESS capacity by 2027](#)

10 ????· The policy and regulatory roadmap is aimed at pushing China's installed base of large-scale energy storage - primarily lithium-ion battery energy storage systems (BESS) - to ...

Contact Us

For catalog requests, pricing, or partnerships, please visit:
<https://www.conrad.edu.pl>