

Ring battery not charging with solar panel





Overview

The Ring solar panel may not be charging due to insufficient sunlight exposure, dirt or debris on the panel, or a faulty connection. Ensure the panel is positioned correctly and clean. How can I tell if my Ring solar panel is working?

You can check the charging status in the Ring app.

The Ring solar panel may not be charging due to insufficient sunlight exposure, dirt or debris on the panel, or a faulty connection. Ensure the panel is positioned correctly and clean. How can I tell if my Ring solar panel is working?

You can check the charging status in the Ring app.

The Solar Charger and Solar Panel provide a trickle charge to the battery in compatible devices to increase time between charges. If your solar accessory is not charging the device as expected or shows “Not Connected” in the Ring app, check the following: Make sure the connection is secure: Unplug.

If you own the Ring Video Doorbell, you can add a Ring Solar Panel to help the battery on the doorbell last longer. While it does not fully charge the system’s battery, it adds a little bit to it each day, so you don’t need to replace it as often while charging the incumbent manually. But the Ring.

Insufficient sunlight, compatibility problems, defective parts, or faulty installation often cause a Ring solar panel not charging. With the right information and a systematic approach, solar energy can power your Ring devices up quickly. In this guide, you’ll learn step-by-step troubleshooting.

Installing ring solar panel to keep your Ring devices always charged is the best solution to keep your Ring devices working without the need for battery replacement. But there are a few situations when ring solar panel fails to charge your ring devices battery. So, why is my ring solar panel not.

Why is your Ring solar panel not charging, and how can you fix it?



The Ring solar panel may not charge if there is insufficient sunlight, bad wiring, or damage to the panel. To fix this, ensure direct sunlight to solar panels and repair or replace the damaged solar panel. Below, we'll discuss the.

Most Ring devices, including the Ring Video Doorbell, Spotlight Cam, and Stick Up Cam, are powered by the Ring quick-release battery pack, a rechargeable lithium-ion battery pack offering up to 6 months of battery life, depending on your camera model and motion events. The good thing about wireless. Why is my ring solar panel not charging?

You've Tried Everything, But Nothing has Worked So your Ring Solar Panel is not charging, but it has been set up for at least four daylight hours. Check the unit's position. The solar panel needs to receive direct sunlight. It cannot be installed on a covered porch because it would not receive the appropriate sunlight.

Why is my solar charger not charging my battery?

In order to extend the lifetime of the lithium-ion battery, your Solar Charger or Solar Panel will not begin charging your battery until its percentage drops below 90%. You may see the solar device's status as "Not Connected" in the Ring app when your battery is over a 90% charge, and this is normal.

What should I do if my ring solar panel won't charge?

Clean the solar panel regularly with a soft, dry cloth and ensure it is free from any cracks, damage, or blockages inside. Faulty Connection: The connection between the Ring Solar Panel and your Ring device may be damaged - or there is a loose wire preventing the charge from being delivered properly.

Does a ring solar power device replace a battery?

Ring solar power devices act as a supplement to your battery, not a substitute. While your solar power device will extend your battery's life and the time between needed recharges, it does not eliminate the need to recharge your battery. Was this article helpful?

.

Do ring solar panels work?

The solar panel charges your Ring battery during the day, so it won't be left



chargeless in the evening. However, though promising, Ring solar panels are not meant to replace charging and are not flawless per se. Sometimes, your solar power device may not be working as it's supposed to. Let's discuss the possible reasons and their fixes.

How do I fix a ring solar panel not working?

Unplug any device connected to the Ring Solar Panel. Plug the Ring Solar Panel back in and wait for the device to fully power on. Check the Ring app to see if the Ring Solar Panel is now working properly. Note: Your solar panel will only show as connected in the app while it has stored power.



Ring battery not charging with solar panel

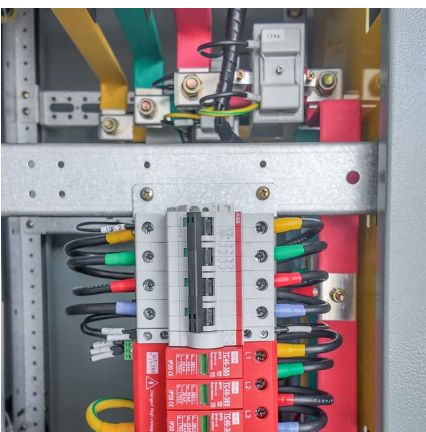


[Ring Solar Panel Not Charging? Quick Fix](#)

The Ring solar panel may not charge if there is insufficient sunlight, bad wiring, or damage to the panel. To fix this, ensure direct sunlight to solar panels and repair or replace the damaged solar panel.

Why Your Ring Battery Isn't Charging with Solar Panel (And How ...

If your Ring battery not charging with solar panel has become your latest DIY nightmare, you're not alone. In this guide, we'll dissect the problem like a tech-savvy surgeon, ...



Why Isn't My Ring Solar Panel Charging? Common Issues and ...

Discover the common reasons why your Ring solar panel may not be charging effectively. Learn troubleshooting tips and solutions to maximize its performance and ensure your security ...

[Ring Solar Panel Not Charging - Easy Fix \[Solved\]](#)

So, why is my ring solar panel not charging? The ring solar panel may not be charging the devices due the fault in wires, blockage, or debris inside



or due to defective solar ...



[Ring Solar Panel Not Charging: Here's How You Fix It](#)

So, why is my ring solar panel not charging? The ring solar panel may not be charging the devices due the fault in wires, blockage, or debris inside or due to defective solar ...



[Ring Solar Panel Not Charging? Quick Fix](#)

The Ring solar panel may not charge if there is insufficient sunlight, bad wiring, or damage to the panel. To fix this, ensure direct sunlight to solar panels and repair or replace ...



[Ring Solar Panel Not Charging: Troubleshooting Tips](#)

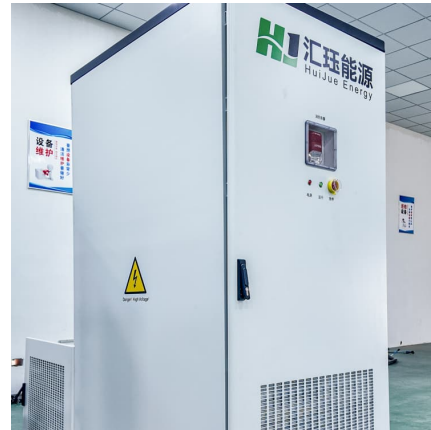
Ring solar panels are designed to be an efficient power source for Ring devices, yet users sometimes face charging issues. These problems can stem from a variety of causes, each with specific remedies.





[Ring Solar Panel Not Charging: Troubleshooting Tips](#)

Ring solar panels are designed to be an efficient power source for Ring devices, yet users sometimes face charging issues. These problems can stem from a variety of causes, ...

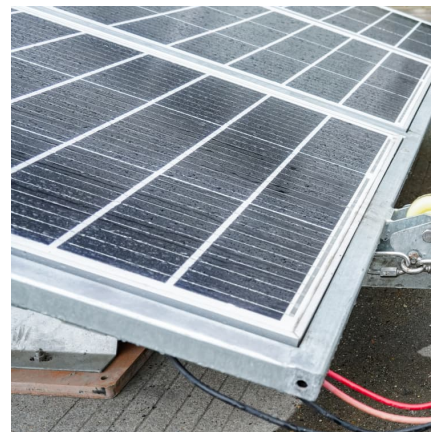


[Ring Solar Panel Not Charging? Follow These Steps ...](#)

To know if your Ring solar panel is not working, check for signs like consistently low battery level, absence of green light and charging notification, inconsistent charging, and damaged or worn cables.

[Ring Solar Panel Not Charging: Here's How You Fix It](#)

The Solution: When this happens, you need to troubleshoot the Ring Video Doorbell and Ring Solar Panel. The following guide addresses the majority of the problems ...



[New solar panel not charging battery . Ring Community](#)

It's possible the problem could be with the Ring Solar Panel itself. Make sure it's clear of any dirt or debris, and that it's firmly connected to the Stick Up Cam.



[Troubleshooting Solar Charger and Solar Panel](#)

Check the battery level: Your solar accessory will not begin charging your Ring device until its battery percentage drops below 90%. The solar device will only show as connected when it ...



[Ring Solar Panel Not Charging: A Troubleshooting Guide](#)

Insufficient sunlight, compatibility problems, defective parts, or faulty installation often cause a Ring solar panel not charging. With the right information and a systematic ...

Ring Solar Panel Not Charging? Follow These Steps to Fix It

To know if your Ring solar panel is not working, check for signs like consistently low battery level, absence of green light and charging notification, inconsistent charging, and ...





Contact Us

For catalog requests, pricing, or partnerships, please visit:
<https://www.conrad.edu.pl>