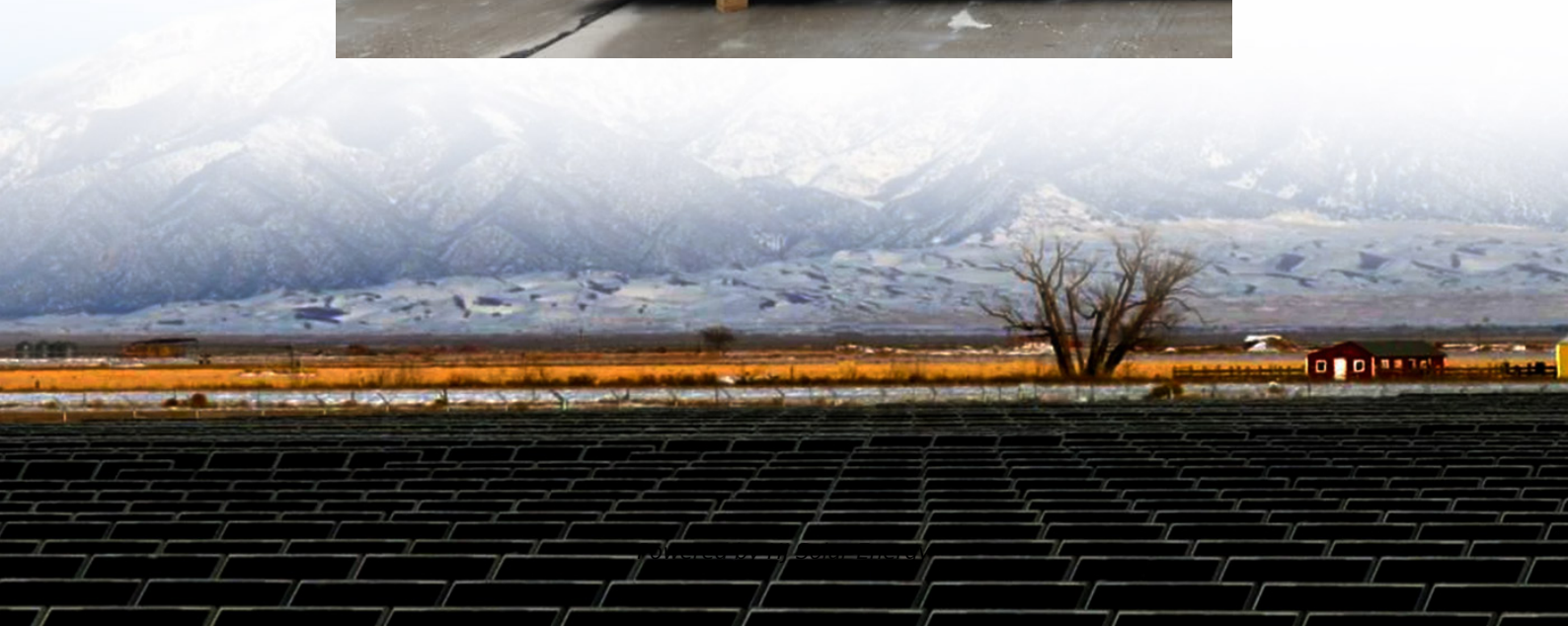


# Ryobi battery charger solid red light reset





## Overview

---

The single solid red light means that the charger is on but there is no battery in it. If you see this light but there is a battery in then try taking it out and putting it back in to see if the battery wasn't quite seated right.

The single solid red light means that the charger is on but there is no battery in it. If you see this light but there is a battery in then try taking it out and putting it back in to see if the battery wasn't quite seated right.

If your Ryobi battery charger shows a solid red light, it means there's a problem preventing normal charging —not just a routine status update. Many assume a red light simply signals "charging in progress," but this misconception can lead to overlooked issues like overheating, battery faults, or.

Here are five possible fixes to try before you place an order for a brand-new charger. Keep reading to get full power! The first thing to remember is that "cordless" doesn't mean that everything involved is completely operating without a cord. When it comes to your Ryobi primary battery pack.

In this full version, DIYNate shows the entire process he went through for in trying to reset his 40 Volt Ryobi batteries to come back to life. This long / full version of the video shows the entire experience and 1 of the 2 videos was able to be charged again (both were reset, but only 1 t. more.

The single solid red light means that the charger is on but there is no battery in it. If you see this light but there is a battery in then try taking it out and putting it back in to see if the battery wasn't quite seated right. A solid green light on its own means that the battery is fully.

People will probably see a green blinking indicator the most on their Ryobi battery charger whenever they use it. That's because of its simple purpose, which is to tell users that the battery is charging. There's not more to say about that, really. It's just a charging indicator (that you can see.

The most common cause for your Ryobi 40V Charger showing flashing red and



green lights is that the battery has been over-discharged. The problem here with Ryobi 40V chargers, is that they don't incorporate a "boost" feature that would allow a a battery that has entered sleep mode to be woken up. What do the lights on a Ryobi Charger mean?

Well, let me help you out with this handy guide to what all of the lights on a Ryobi charger mean. The single solid red light means that the charger is on but there is no battery in it. If you see this light but there is a battery in then try taking it out and putting it back in to see if the battery wasn't quite seated right.

How do I know if my Ryobi battery is charging?

When you plug in the battery charger without a battery pack, you should see a solid RED light. This simply indicates that the charger is receiving power and is ready to charge a Ryobi battery. Once you put a battery pack on the charger, you should normally see one of two things:.

Why is my Ryobi Charger flashing red and green?

If the Ryobi charger has flashing RED and GREEN lights, then there's definitely a fault that has to be dealt with. This could be happening for various reasons, such as a defective charger, a dead battery, or even something as simple as the contacts on the battery being dirty and not making good contact.

Why is my Ryobi Charger blinking?

This only occurs when you put a bad battery on the Ryobi charger. For example, if you put on a battery that doesn't hold charge any longer, the charger will blink as in the picture below. It isn't going to provide power to the attached battery, and will just blink both colors. Take the battery off as soon as you notice this pattern of lights.

How do you charge a Ryobi battery?

For most Ryobi batteries that have been deeply discharged, you can place them on the charger and wait. Once the normal voltage is reached within the battery, it should shift into a normal charging mode. However, consult your manufacturer's manual to ensure this is the recommendation. Another way is to do quick charges.

Why is my Ryobi battery not charging?



If the LED status repeats a second time, try charging a different battery. • If a different battery charges normally, it's likely an issue with the battery. • If a different battery also indicates "Defective," the charger may be defective. Battery ready to use. If your battery isn't charging, see: [Why isn't my RYOBI Battery charging?](#)



## Ryobi battery charger solid red light reset

---



### [Ryobi battery Charger Lights Meaning](#)

Red flashing lights only pop up when the charger determines that your battery is exceeding suitable temperatures. It'll alternate between dim and red like the picture underneath this.

### [What do the Lights on a Ryobi Charger Mean?](#)

The single solid red light means that the charger is on but there is no battery in it. If you see this light but there is a battery in then try taking it out and putting it back in to see if ...



### **What Does a Flashing Red Light Mean on a Ryobi Battery Charger?**

When your Ryobi battery charger flashes red, systematic troubleshooting can often resolve the issue without costly replacements. Follow these detailed steps to diagnose ...

### **What do the flashing LED lights mean on RYOBI 18V Single ...**

The following LED light indicators explains that status of the battery charge or whether there's a defect for RYOBI 18V ONE+ single port chargers.



### [Why is my Ryobi charger flashing red light?](#)

When the green LED light is flashing and the red LED light is steady, the battery is charging. When the red LED is off and the green LED is steady, the battery is fully charged.

### **What Does a Solid Red Light Mean on a Ryobi Battery Charger?**

When your Ryobi battery charger displays a solid red light, it's communicating one of three primary issues: a charging error, battery fault, or environmental problem.



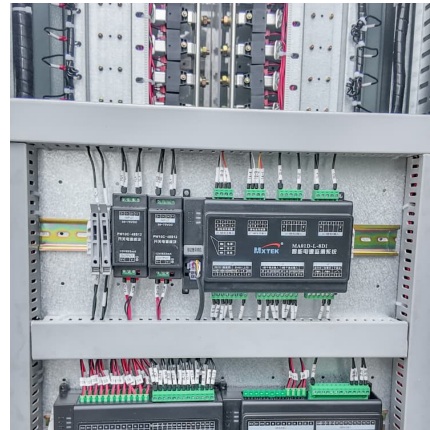
### **What Does a Solid Red Light Mean on a Ryobi Battery Charger?**

This compact charger is ideal for quickly diagnosing and resolving solid red light issues. It features an advanced diagnostic system that identifies battery faults, overheating, or ...



### Ryobi battery Charger Lights Meaning

Red flashing lights only pop up when the charger determines that your battery is exceeding suitable temperatures. It'll alternate between dim and red like the picture underneath ...



### **Ryobi Charger Not Working Or Lighting Up? 5 Fixes To Try**

Do you have a Ryobi battery charger that doesn't seem to be working or even lighting up as it should? Try these 5 possible fixes before replacing it.

### **How to Reset a 40 Volt Ryobi Battery! Fix for Battery Not ...**

Put the battery back together with the T10H security screws (you may only want to put 2 screws in initially in case the fix doesn't work and you need to access again).



### **Ryobi Charger Not Working Or Lighting Up? 5 Fixes To Try**

Put the battery back together with the T10H security screws (you may only want to put 2 screws in initially in case the fix doesn't work and you need to access again).



### What do the Lights on a Ryobi Charger Mean?

The single solid red light means that the charger is on but there is no battery in it. If you see this light but there is a battery in then try taking it out and putting it back in to see if the battery wasn't quite seated right.



## Contact Us

---

For catalog requests, pricing, or partnerships, please visit:  
<https://www.conrad.edu.pl>