

Samsung remote solar battery





Overview

Instead, the TV's smart remote has a solar panel on its back that you can use for charging, whether you're indoors or outdoors. The Freestyle remote and the TV's smart remote can even be charged with the same USB-C cable your phone uses.

Instead, the TV's smart remote has a solar panel on its back that you can use for charging, whether you're indoors or outdoors. The Freestyle remote and the TV's smart remote can even be charged with the same USB-C cable your phone uses.

The Samsung SolarCell Remote was largely created as an eco-friendly way to keep 99 million AAA batteries from damaging the environment. You can pair this solar remote control to your QLED Samsung Smart TV for enhanced, easy function. Charging and monitoring the charge of the Samsung solar remote is.

Unlike other remotes, your new Samsung Smart TV, Odyssey Ark smart monitor, or The Freestyle projector's remote doesn't require you to keep a supply of extra batteries on hand. Instead, the TV's smart remote has a solar panel on its back that you can use for charging, whether you're indoors or.

This article provides a detailed, technical guide to safely and effectively replacing the coin cell battery in your Samsung solar remote, optimizing its performance and extending its operational lifespan. Understanding the Technology: Samsung Solar Remote Battery Systems Before delving into the.

LET THERE BE A REMOTE: Place your SolarCell Remote wherever the light is; Leave the solar panel facing up and let the remote do its job and charge; The remote charges through both indoor and outdoor lighting instead of batteries Would you like to tell us about a lower price?

Place your remote.

This guide provides instructions on how to change the battery in your Samsung solar remote, ensuring optimal performance and longevity. The process can be done using the solar panel or a USB-C cable, which can be



found on the Samsung website. To check the battery level, press the voice button on.

Charging the Samsung Solar Remote is relatively straightforward, thanks to its innovative solar technology. Below are different charging methods you can utilize. The primary charging method for the Samsung Solar Remote is, of course, solar energy. Here's how to maximize this method: 1. Finding the.



Samsung remote solar battery



Samsung SolarCell Remote, Solar Powered, Self-Charging TV Remote

Leave the solar panel facing up and let the remote do its job and charge. Plus, the SolarCell Remote™ is here to make every option more sustainable, saving up to 200 million batteries ...

[Charge the SolarCell remote for your Samsung Smart ...](#)

To charge the remote with solar energy, simply set the remote down with the solar panel facing up. You can do this in your living room while your lights are turned on, or you can place it near a window where it will soak in natural sunlight.



[How To Change Battery In Samsung Solar Remote](#)

This guide provides instructions on how to change the battery in your Samsung solar remote, ensuring optimal performance and longevity. The process can be done using the ...



[Mastering Your Samsung Solar Remote: A Comprehensive ...](#)

One of these innovations is the Samsung Solar Remote, a truly eco-friendly solution that leverages solar energy. In this article, we'll



explore the ins and outs of charging ...



[SolarCell Remote\(TM\) w/USB-C Charging Cable Samsung US](#)

Discover Samsung's SolarCell Remote(TM), with a solar panel that uses sunlight to charge indoors and outdoors, plus USB-C compatibility so you can charge at night!



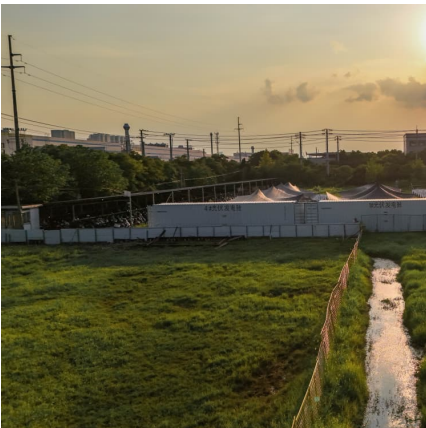
[BN59-01385A Solar Voice Remote for Samsung TVs ...](#)

This solar-powered remote control is designed to eliminate the hassle of frequent battery replacements. Its built-in solar panel efficiently captures sunlight to recharge ...



[How to change Battery in Samsung Solar Remote?](#)

This article provides a detailed, technical guide to safely and effectively replacing the coin cell battery in your Samsung solar remote, optimizing its performance and extending ...





Charge the SolarCell remote for your Samsung Smart TV or ...

To charge the remote with solar energy, simply set the remote down with the solar panel facing up. You can do this in your living room while your lights are turned on, or you can place it near ...



[Samsung SolarCell Remote Battery and Charging Guide](#)

Charging and monitoring the charge of the Samsung solar remote is important, so we have provided a detailed guide to make your transition from battery-powered to solar ...

Samsung SolarCell Remote, Solar Powered, Self-Charging TV ...

Leave the solar panel facing up and let the remote do its job and charge. Plus, the SolarCell Remote™ is here to make every option more sustainable, saving up to 200 million batteries ...



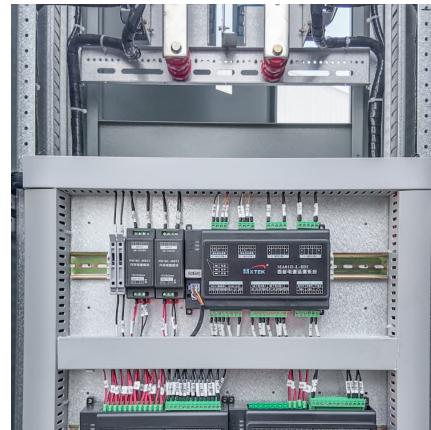
Maximizing the Life of Your Samsung Solar Remote: How Long to ...

2 ???· Understanding the Samsung Solar Remote Samsung solar remotes, particularly designed to interface with Samsung TVs and smart home devices, are equipped with solar ...



[SolarCell Remote\(TM\) w/USB-C Charging Cable](#)

??4%??· Discover Samsung's SolarCell Remote(TM), with a solar panel that uses sunlight to charge indoors and outdoors, plus USB-C compatibility so you can charge at night!



How to Check Samsung Solar Remote Battery Level and Ensure

Discover how to easily check your Samsung solar remote's battery level and ensure a seamless viewing experience. This article provides practical steps to monitor battery ...

Contact Us

For catalog requests, pricing, or partnerships, please visit:
<https://www.conrad.edu.pl>