

Solar 10 2 amp battery charger manual





Overview

What wattage does a 10 amp solar charge controller use?

The recommended wattage for a 10 amp solar charge controller is between 130 to 150 watts. This is not sufficient for most systems, however. You'll need a higher amp solar controller if you're planning to install solar panels with a larger output. A 10A solar charge controller is enough for systems with a maximum output of about 150 watts.

What voltage does a solar charge controller work?

Solar charge controller User Manual 12v/24v Auto working voltage, you also can choose the voltage of 36v/48v/60v/96v as well as lithium battery.

What are the features of a solar charge regulator?

4. The charge regulator is only suitable for regulating solar modules. Never connect another charging source to the charge regulator. Build-in industrial micro controller. Big LCD display, all adjustable parameter. Fully 4-stage PWM charge management. protection, over-load protection. 5. Dual mosfet Reverse current protection, low heat production.



Solar 10 2 amp battery charger manual

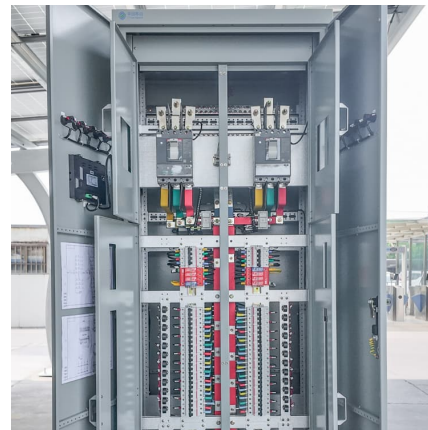


[Solar 1002 Operator's Manual , Manualzz](#)

This Operator's Manual contains information regarding safety, operation, maintenance and storage of your new battery charger. Make sure that you, and anyone else who will be using ...

Battery Charger Owner's Manual

Working in vicinity of a lead-acid battery is dangerous. Batteries generate explosive gases during normal battery operation. For this reason, it is of utmost importance that each time before using ...

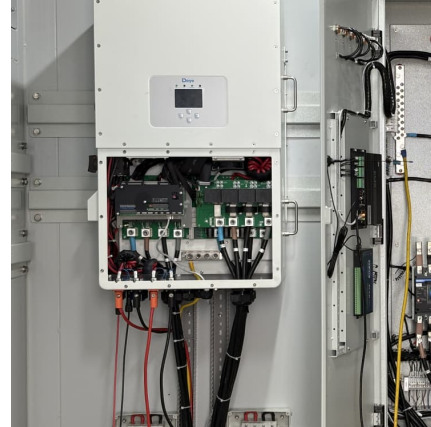


[BLSOLAR2 Solar Battery Charger User Guide](#)

The Battery Life Solar Battery Chargers are suitable for charging all types of 12V lead-acid batteries, including Wet (Flooded), Gel, MF (Maintenance-Free) and AGM (Absorption Glass ...

10A??-22-03-??

The battery cable should be as short as possible to minimize loss. This controller is suitable for 12V Sealed, GEL, Flooded and Lithium battery. The charge controller is only suitable for ...



User's Manual

User's Manual SAFETY INSTRUCTIONS 1. sure your battery has enough voltage for the controller to recognize the battery type before first installation. 2.The battery cable should be as ...



MPPT solar charger manual

Lithium batteries .. 34 6.5. Shutdown and restart procedure . 34 ...



Solar charge controller User Manual

Detailed report of the module,damage warning,charging quantity instructions,shows the battery storage state and load,all function by pressing a button,easy to use,the function is strong





Contact Us

For catalog requests, pricing, or partnerships, please visit:
<https://www.conrad.edu.pl>