

Solar Panel capital expenditure estimate





Overview

With our online spreadsheet, you can calculate energy yield and capital costs of a pv project / photovoltaics, based on location, modules and tracking options.

With our online spreadsheet, you can calculate energy yield and capital costs of a pv project / photovoltaics, based on location, modules and tracking options.

NREL analyzes the total costs associated with installing photovoltaic (PV) systems for residential rooftop, commercial rooftop, and utility-scale ground-mount systems. This work has grown to include cost models for solar-plus-storage systems. NREL's PV cost benchmarking work uses a bottom-up.

PV installers should provide an estimate of production, typically separated into average monthly production. On a flat landscape, the climate, elevation, and temperature determine the amount of energy produced by a PV solar system. Generally, the resource decreases as one moves from the equator to.

With our online spreadsheet, you can calculate energy yield and capital costs of a pv project / photovoltaics, based on location, modules and tracking options.

Capital expenditure is a determining factor in the viability of solar projects. It encompasses the initial investments required for equipment, labor, site preparation, and systems integration. Given the growing emphasis on sustainable energy solutions, analyzing these costs presents an essential.

Capital expenditure (capex) and O&M costs are site-specific and should be assessed as part of the prefeasibility and feasibility studies. Initially, these costs are established as evidence-based assumptions, and they will only be finalized with the signing of the EPC contract. Nevertheless, they.

Definition of CAPEX: Capital Expenditure (CAPEX) refers to the funds used by a company to acquire, upgrade, and maintain physical assets. These assets can range from buildings and land to equipment like computers or even intangible



assets like patents. Unlike usual expenses that are immediately. What are solar PV project capital expenditure & O&M costs?

15.2 SOLAR PV PROJECT CAPITAL AND OPERATIONAL COSTS Capital expenditure (capex) and O&M costs are site-specific and should be assessed as part of the prefeasibility and feasibility studies. Initially, these costs are established as evidence-based assumptions, and they will only be finalized with the signing of the EPC contract.

How does a developer's cost of financing affect a solar PV project?

A developer's cost of financing has become a critical distinguishing factor for success as the solar PV market becomes increasingly competitive. Total capital costs also include the cost of land and support infrastructure, such as roads and drainage, as well as the project company's start-up costs.

How much does a solar PV system cost?

For example, the global average capital cost of solar photovoltaic (PV) systems declined by 82% between 2010 and 2020, from \$4,621/kW to \$820/kW, according to the International Renewable Energy Agency (IRENA). To compare the capital costs of different renewable energy sources, it is important to consider the following aspects:.

Can cost of capital be used to estimate power generation cost?

Results underline large country differences in cost of capital. The approach can complement but not replace other methods to estimate cost of capital. The cost of capital (CoC) is an important parameter for accurately calculating power generation cost, particularly for capital-intensive renewables such as solar PV.

How much does a European solar PV plant cost?

Table 22 shows a typical breakdown of costs for a multi-mega-watt (MW) European ground-mounted solar PV power plant at the time of writing in late 2014. Total costs for a European solar PV plant average around US \$1.7 million per MW. However, European costs are only a partial proxy for costs in other markets, and project costs.

How does solar PV technology affect system component costs?

Source: The dataset is extracted mainly from the mature markets of Europe



and North America, 2014. versus multi-crystalline modules). Solar PV technology in particular is a source of significant variation in system component costs.



Solar Panel capital expenditure estimate



RENEWABLE ENERGY

A 6 Cheap imports have been the backbone of solar installations in India and account for 80-90 per cent of the total installations. This has been counter-productive in the growth of the ...

Guide to tax and accounting for commercial solar in the UK

When a business purchases an asset, it is able to deduct some or all of the value of the asset (including delivery and installation charges) from its profits before it pays tax. The Basic Position ...



[Solar Installed System Cost Analysis , Solar Market ...](#)

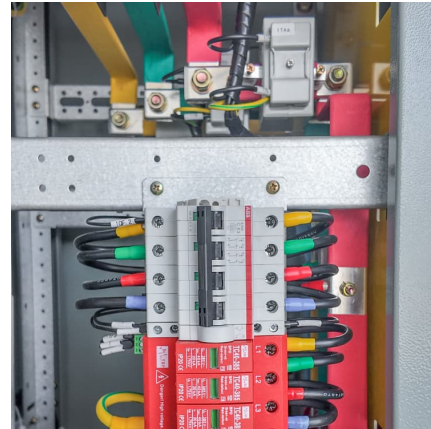
Solar Installed System Cost Analysis NREL analyzes the total costs associated with installing photovoltaic (PV) systems for residential rooftop, commercial rooftop, and utility-scale ground-mount systems.

[Examining Operating Expense \(OPEX\) in Solar Systems](#)

A Solar OPEX (Operating Expenditure) model is a financial structure commonly used in the solar energy industry, particularly for solar power



systems. Under this model, the customer does not own the solar system ...



The Solar Panels Business Case: A Management Accounting ...

The case involves capital expenditure analysis and communication for installing solar panels on roofs of two warehouses in the Super-Savers Supermarkets supply chain. ...

Demystifying Solar Power Plant Costs: Factors and ...

Conclusion FAQ What are the main factors that determine the cost of a solar power plant? How does the initial capital cost of a solar plant compare to its ongoing operational costs? What components are typically ...



SOLAR PV PROJECT CAPITAL AND OPERATIONAL COSTS

A developer's cost of financing has become a critical distinguishing factor for success as the solar PV market becomes increasingly competitive. Total capital costs also include the cost of land ...



Estimating the cost of capital for renewable energy projects

Thus, the cost of capital makes up a significant part of the lifecycle costs of RE projects; for example, in recent years, for solar photovoltaics (PV) in Germany the cost of ...



[Breaking down solar farm costs: Free template inside](#)

How to properly understand and efficiently allocate the costs of your solar plant project. Bonus track included: a PV plant bill of quantities.

The Solar Panels Business Case I. Introduction Central Arizona.

The Solar Panels Business Case I. Introduction Central Arizona The Solar Panels Business Case I. Introduction Central Arizona Storage has 850 stores. As part of the CEO's low-cost ...



[100% Capital Allowance on Solar Installation Costs ...](#)

This means that when calculating capital allowances--tax relief on capital expenditure--solar panels are placed into a special rate pool. Unlike the general pool of assets, this special rate pool recovers tax relief at a slower pace.





Capital expenditure and levelized cost of electricity of photovoltaic

Over the last decade, the levelized cost of electricity (LCOE) of solar and wind energy dropped extraordinary. Within this context, this paper aims to project the capital ...



[8. Financial Modeling for Off-Grid Solar](#)

Solar Capital Expenditures In the off-grid solar model, capital expenditures (CAPEX) are the costs to purchase and install the solar equipment, including the cost for the solar PV panels, battery, ...

[HS252 Capital allowances and balancing charges 2024](#)

You cannot claim capital allowances if you use cash basis, there is an exception for expenditure on cars. Find out how to calculate your taxable profits in Helpsheet 222.



Solar Farm Financial Model

197 views , Start the discussion! , Bookmark Add to cart - \$80.00 solar renewable energy financial model finance model solar power solar installation solar-park excel ...



Solar Panels Capital Allowances

Solar panel capital allowances represent a huge boost to the ROI of most commercial solar and energy storage installations but lack of clarity and recent changes have left people confused. In this article, we will explain ...

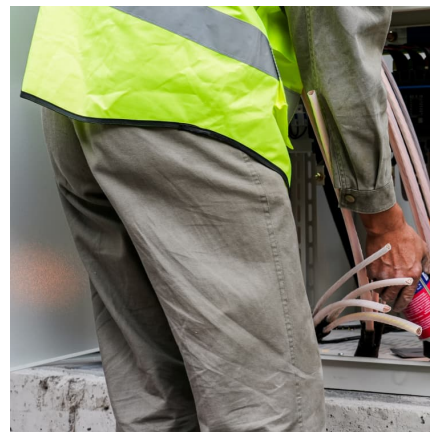


[The cost of financing for renewable power](#)

Based on a new, unique dataset from a global survey, this IRENA report presents unprecedented insights on the cost of capital for onshore wind, offshore wind and solar photovoltaic (PV) projects.

[CAPEX vs OPEX Solar: Differences, Benefits and ...](#)

In the CAPEX or Capital Expenditure model, the consumer pays for the equipment, installation, operation, and maintenance of the solar energy system. In short, the consumer bears the capital expenditure of the solar ...



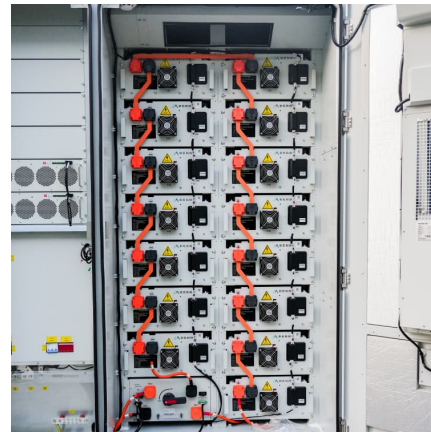
The Solar Panels Business Case I. Introduction Central Arizona ...

All capital expenditure (capex) would be in Year 0 (this year), and solar panel systems would start generating electricity and be depreciated from the beginning of Year 1.



Solar Panels Business Case: Cutting Costs

The Solar Panels Business Case I. Introduction
Central Arizona Storage has 850 stores. As part of the CEO's low-cost supply chain strategy, \$0.5bn of capital has recently been invested in a warehouse transformation ...



Utility-Scale PV , Electricity , 2024 , ATB , NREL

Units using capacity above represent kWAC.
2024 ATB data for utility-scale solar photovoltaics (PV) are shown above, with a base year of 2022. The Base Year estimates rely on modeled capital expenditures (CAPEX) and operation and ...

Solar Installed System Cost Analysis , Solar Market Research

Solar Installed System Cost Analysis NREL analyzes the total costs associated with installing photovoltaic (PV) systems for residential rooftop, commercial rooftop, and utility ...



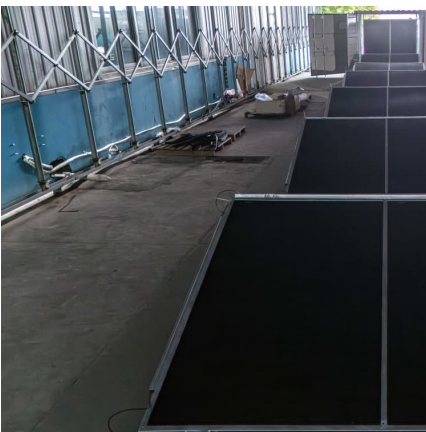


[Solar Power Development Project: Financial Analysis](#)

60 solar panels; replacement of six inverters every 5 years; land lease; insurance at 0.3% of revenues; and administrative and other expenses. The BESS will be replaced every 10 years ...

PVWatts Calculator

NREL's PVWatts [®] Calculator Estimates the energy production of grid-connected photovoltaic (PV) energy systems throughout the world. It allows homeowners, small building owners, ...



Solar Investment Analysis Part 1: Estimating System Production

This section will help readers understand the core components of the cost of a PV solar system, including direct capital costs, indirect capital costs, and operations and maintenance.

2025 Solar Panel Costs: Ultimate Guide to Pricing and ...

How to calculate the cost of solar panels How much do solar panels cost per square foot Do solar panels really save you money? Solar installation costs How to reduce the cost of solar panels Frequently asked ...



CA22335

CAA01/S104A With effect from 1 April 2012 for corporation tax and 6 April 2012 for income tax, all capital expenditure on the provision of solar panels is specifically designated as special rate.



What Are the Specific Accounting Considerations for ...

Solar panels, wind turbines, and hydroelectric facilities each have unique design features that influence capital expenditure. For instance, the installation of long-lasting solar panels may have a higher initial outlay but ...



Cost Breakdown for Solar Power Installation: The Best Guide

Are you curious about solar power installation cost in Nigeria? Learn each solar power component's prices and how to budget for your solar power setup.





Optimizing Solar Energy Costs and Impacts Analysis

Executive Summary Design your executive summary table to clearly present the following information: o The maximum solar panel prices negotiable for insource alternative. o The sizes of the warehouse installations ...



SOLAR PV PROJECT CAPITAL AND OPERATIONAL COSTS

For illustrative purposes, some indicative estimates for solar PV project costs (both capex and operating expenditures, or opex) are provided in this section. 15.2.1 CAPITAL EXPENDITURE ...

Based on the below case is my solution for Parameters and ...

All capital expenditure (capex) would be in Year 0 (this year), and solar panel systems would start generating electricity and be depreciated from the beginning of Year 1.



Understanding Capital Costs in Solar Power Projects

Capital costs refer to the initial expenditure required to set up a solar power plant. These costs can encompass a wide range of items, including equipment purchase, land acquisition, construction, and other starting expenses.



Contact Us

For catalog requests, pricing, or partnerships, please visit:
<https://www.conrad.edu.pl>