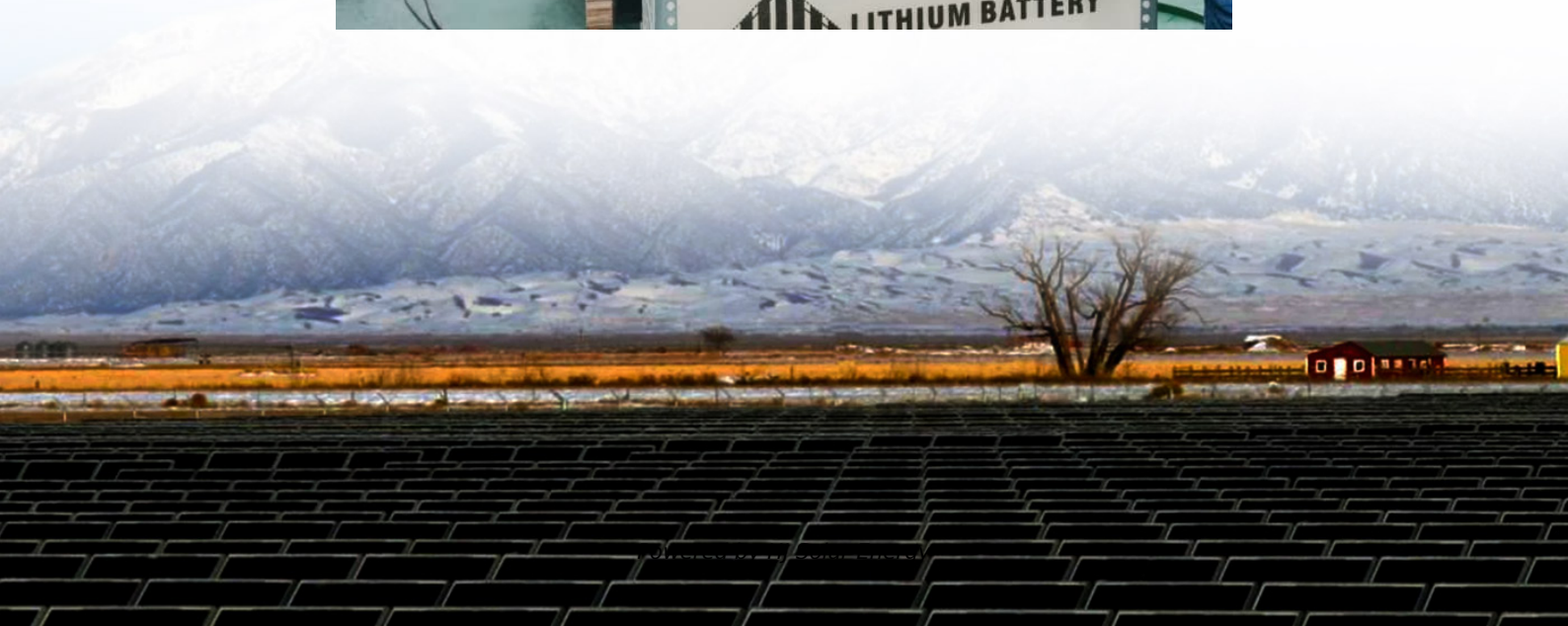


Solar ba6 battery tester





Overview

Compatible with a wide variety of battery types, the BA6 is designed to test flooded, AGM flat plate, spiral wound, gel cell, start-stop AGM and enhanced flooded batteries. It offers easy, quick and decisive assessment of 12V batteries, starting systems and charging.

Compatible with a wide variety of battery types, the BA6 is designed to test flooded, AGM flat plate, spiral wound, gel cell, start-stop AGM and enhanced flooded batteries. It offers easy, quick and decisive assessment of 12V batteries, starting systems and charging.

The BA6 Battery and System Tester features an operating range of 4.5-16V and is optimized to test six distinct battery types: Conventional Flooded Acid, AGM Flat Plate, AGM Spiral Wound, Start-Stop AGM, Start-Stop Enhanced Flooded and Gel Cell batteries. It also features the convenience of starting.

The BA6 Battery and System Tester features an operating range of 4.5-16V and is optimized to test six distinct battery types: Conventional Flooded Acid, AGM Flat Plate, AGM Spiral Wound, Start-Stop AGM, Start-Stop Enhanced Flooded and Gel Cell batteries. It also features the convenience of starting.

The BA6 Battery and System Tester features an operating range of 4.5-16V and is optimized to test six distinct battery types: Conventional Flooded Acid, AGM Flat Plate, AGM Spiral Wound, Start-Stop AGM, Start-Stop Enhanced Flooded and Gel Cell batteries. It also features the convenience of starting.

The BA6 offers a complete testing solution for 12 Volt batteries and systems. Compatible with a wide variety of battery types, the BA6 is designed to test flooded, AGM flat plate, spiral wound, gel cell, start-stop AGM and enhanced flooded batteries. It offers easy, quick and decisive assessment of.

SOLAR battery service equipment provides the power, features and convenience needed by today's busy technicians. From battery chargers and testers to power inverters and commercial jump starting equipment, SOLAR products deliver high performance solutions to professionals and consumers alike. SOLAR.



Clore Automotive SOLAR BA6 12V Digital Battery and Electrical System Tester
The BA6 has a testing range of 100-1200 CCA, covering everything from powersport to Group 31 batteries. It features an LCD display that offers a high level of detail throughout the testing process and improved viewing in.



Solar ba6 battery tester



Solar [BA6] 12V Battery and System Tester SOLAR 12V Battery ...

Compatible with a wide variety of battery types, the BA6 is designed to test flooded, AGM flat plate, spiral wound, gel cell, start-stop AGM and enhanced flooded batteries. It offers easy, ...

SOLAR BA6 12V Digital Battery and Electrical System Tester

Clore Automotive SOLAR BA6 12V Digital Battery and Electrical System Tester. The BA6 has a testing range of 100-1200 CCA, covering everything from powersport to Group 31 batteries. ...



User Manual SOLAR BA6

Check battery connections and be sure that you have not made a reverse connection. If condition persists, confirm that all vehicle accessories are turned OFF and that ...

[12V Digital Battery and System Tester Handheld AGM](#)

The BA6 Battery and System Tester features an operating range of 4.5-16V and is optimized to test six distinct battery types: Conventional



Flooded Acid, AGM Flat Plate, AGM Spiral Wound, Start-Stop AGM, Start-Stop Enhanced Flooded ...



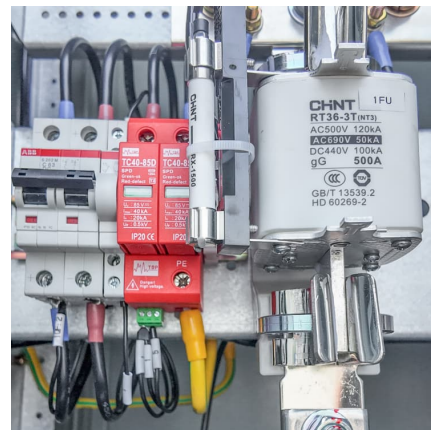
Solar 100-1200 CCA Electronic Battery & System Tester (BA6)

The BA6 Battery and System Tester features an operating range of 4.5-16V and is optimized to test six distinct battery types: Conventional Flooded Acid, AGM Flat Plate, AGM Spiral Wound, ...



SOLAR 100-1200 CCA 12 Volt Digital Battery And System Tester ...

The BA6 Battery and System Tester features an operating range of 4.5-16V and is optimized to test six distinct battery types: Conventional Flooded Acid, AGM Flat Plate, AGM Spiral Wound, ...



SOLAR 100-1200 CCA 12 Volt Digital Battery And System Tester SOR BA6

The BA6 Battery and System Tester features an operating range of 4.5-16V and is optimized to test six distinct battery types: Conventional Flooded Acid, AGM Flat Plate, AGM Spiral Wound, ...





[Clore Automotive BA6 Battery and System Tester, ...](#)

The BA6 Battery and System Tester features an operating range of 4.5-16V and is optimized to test six distinct battery types: Conventional Flooded Acid, AGM Flat Plate, AGM Spiral Wound, Start-Stop AGM, Start ...



[Solar 100-1200 CCA Electronic Battery & System ...](#)

The BA6 Battery and System Tester features an operating range of 4.5-16V and is optimized to test six distinct battery types: Conventional Flooded Acid, AGM Flat Plate, AGM Spiral Wound, Start-Stop AGM, Start-Stop Enhanced Flooded ...

[12V Digital Battery and System Tester Handheld AGM](#)

The BA6 Battery and System Tester features an operating range of 4.5-16V and is optimized to test six distinct battery types: Conventional Flooded Acid, AGM Flat Plate, AGM Spiral Wound, ...



[SOLAR BA6 Solar 12V Battery and System Tester](#)

The BA6 offers a complete testing solution for 12 Volt batteries and systems. Compatible with a wide variety of battery types, the BA6 is designed to test flooded, AGM flat plate, spiral wound, ...



Solar 100-1200 CCA Electronic Battery & System Tester (BA6)

It also features the convenience of starting and charging system testing, offering quick assessment and providing both a numerical result and a pass/fail result. The BA6 has a testing ...

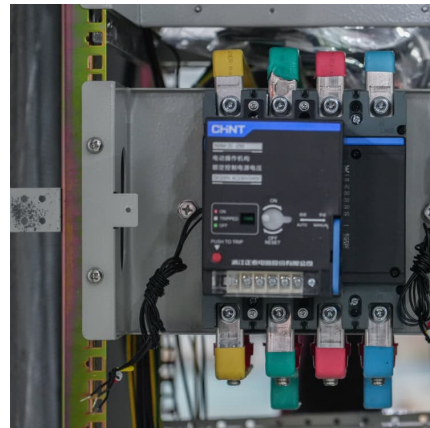


Solar [BA6] 12V Battery and System Tester SOLAR 12V Battery ...

Compatible with a wide variety of battery types, the BA6 is designed to test flooded, AGM flat plate, spiral wound, gel cell, start-stop AGM and enhanced flooded batteries. ...

Clore Automotive BA6 Battery and System Tester, One Size, ...

The BA6 Battery and System Tester features an operating range of 4.5-16V and is optimized to test six distinct battery types: Conventional Flooded Acid, AGM Flat Plate, ...



Contact Us

For catalog requests, pricing, or partnerships, please visit:
<https://www.conrad.edu.pl>