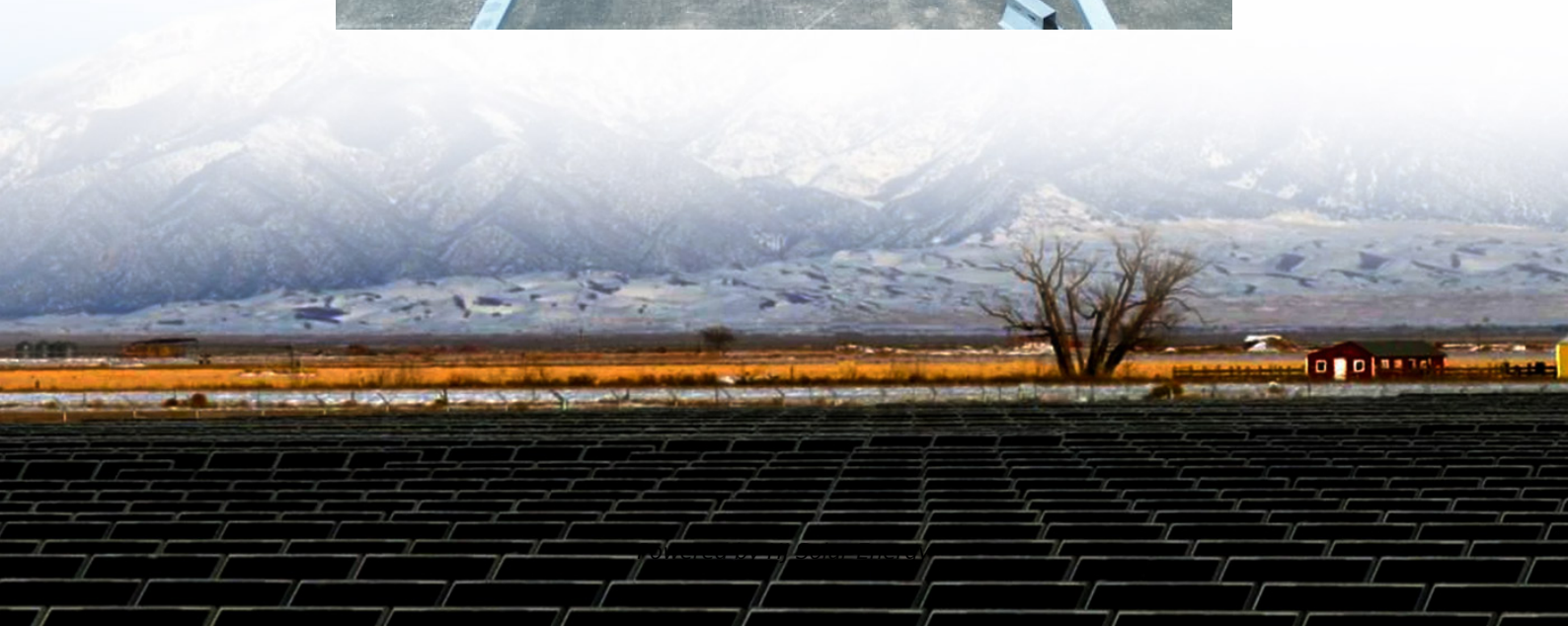


Solar carbon pile battery tester





Overview

Solar 1874 12 Volt Carbon Pile Battery Load Tester The 1874 provides variable load carbon pile testing capability, allowing quick, conclusive assessment of batteries up to 1000 CCA. With dual gauges, it is easy to manage the testing process and observe the results - load control is.

Solar 1874 12 Volt Carbon Pile Battery Load Tester The 1874 provides variable load carbon pile testing capability, allowing quick, conclusive assessment of batteries up to 1000 CCA. With dual gauges, it is easy to manage the testing process and observe the results - load control is.

The 1876 provides variable load carbon pile testing capability for 6, 12 or 24 Volt batteries to 2000 CCA. It allows quick, conclusive assessment of battery capacity as well as at-a-glance diagnosis of alternator output and starting system capacity. With dual gauges, it is easy to manage the testing.

The 1876 provides variable load carbon pile testing capability for 6, 12 or 24 Volt batteries to 2000 CCA. It allows quick, conclusive assessment of battery capacity as well as at-a-glance diagnosis of alternator output and starting system capacity. The unit features voltage selection to dial in the.

The SOLAR 500 Amp 12V Carbon Pile Battery Tester is a full-functioning, true RMS current and voltage AC/DC load tester that can be powered with its internal battery or the included solar panel. This device will test for voltage, resistance, polarity and temperature, and test most electric.

For years, carbon pile battery load testers have lacked versatility, often struggling with accurate assessments of larger or professional batteries. Having tested several models firsthand, I can tell you that the difference lies in load capacity and usability. The Clore Automotive Solar 1876 1000.

The SOLAR 1876 provides variable load carbon pile testing capability for 6,12 and 24 Volt batteries and systems. It provides quick, conclusive assessment of batteries up to 2000 CCA. It quickly changes operating voltage through the turn of a knob and, like the 1874, its dual gauges make it easy to.



The 1876 provides variable load carbon pile testing capability for 6, 12 or 24 Volt batteries to 2000 CCA. It allows quick, conclusive assessment of battery capacity as well as at-a-glance diagnosis of alternator output and starting system capacity. With dual gauges, it is easy to manage the.



Solar carbon pile battery tester



Clore Automotive Solar 1876 1000 Amp Carbon Pile Battery Load ...

The 1876 provides variable load carbon pile testing capability for 6, 12 or 24 Volt batteries to 2000 CCA. It allows quick, conclusive assessment of battery capacity as well as at ...

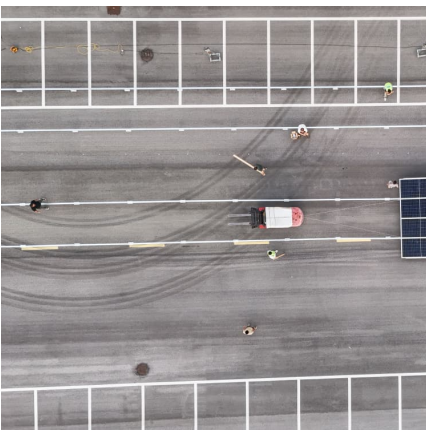
[Solar 1876 1000 Amp 6/12/24V Carbon Pile Battery Tester](#)

The 1876 provides variable load carbon pile testing capability for 6, 12 or 24 Volt batteries to 2000 CCA. It allows quick, conclusive assessment of battery capacity as well as at-a-glance diagnosis ...



[SOLAR 1000 Amp 6/12/24V Carbon Pile Battery Tester](#)

The 1876 provides variable load carbon pile testing capability for 6, 12 or 24 Volt batteries to 2000 CCA. It allows quick, conclusive assessment of battery capacity as well as at ...



[1874 12 Volt Carbon Pile Battery Load Tester](#)

The 1874 provides variable load carbon pile testing capability, allowing quick, conclusive assessment of batteries up to 1000 CCA. With dual gauges, it is easy to manage the testing ...



Best Carbon Pile Battery Load Tester [Updated On: August 2025]

The carbon pile load tester functions by utilizing a pile of carbon resistors to create a variable load on the battery. When the tester applies a load, it measures the voltage ...



[Solar 1876 1000 Amp 6/12/24V Carbon Pile Battery ...](#)

The 1876 provides variable load carbon pile testing capability for 6, 12 or 24 Volt batteries to 2000 CCA. It allows quick, conclusive assessment of battery capacity as well as at-a-glance diagnosis of alternator output and starting system capacity.



[SOLAR SOL1874 500 Amp Carbon Pile Battery Load Tester](#)

Use this Solar Battery Tester for making sure your backup batteries are in top condition. 500 Amp/40 minute 12V carbon pile minimum load feature ensures accurate results. The SOLAR ...





Toolsource

The Solar 1876 1000 Amp 6/12/24V Carbon Pile Battery Tester is a versatile and reliable tool for testing batteries of all types. It features a variable load capability of up to 1000 amps, making it ideal for testing batteries in a variety of applications.



Clore Automotive Solar 1876 1000 Amp Carbon Pile Battery Load Tester

The 1876 provides variable load carbon pile testing capability for 6, 12 or 24 Volt batteries to 2000 CCA. It allows quick, conclusive assessment of battery capacity as well as at ...

Toolsource

The Solar 1876 1000 Amp 6/12/24V Carbon Pile Battery Tester is a versatile and reliable tool for testing batteries of all types. It features a variable load capability of up to 1000 amps, making it ...



[1876 Solar 6/12/24 Volt 1000 Amp Carbon Pile Battery ...](#)

The SOLAR 1876 provides variable load carbon pile testing capability for 6,12 and 24 Volt batteries and systems. It provides quick, conclusive assessment of batteries up to 2000 CCA. It quickly changes operating voltage through the ...



[Solar 1874 12 Volt Carbon Pile Battery Load Tester](#)

The 1874 provides variable load carbon pile testing capability, allowing quick, conclusive assessment of batteries up to 1000 CCA. With dual gauges, it is easy to manage the testing ...



1876 Solar 6/12/24 Volt 1000 Amp Carbon Pile Battery Load Tester

The SOLAR 1876 provides variable load carbon pile testing capability for 6,12 and 24 Volt batteries and systems. It provides quick, conclusive assessment of batteries up to 2000 CCA. It ...

[Solar 1874 12 Volt Carbon Pile Battery Load Tester](#)

The 1874 provides variable load carbon pile testing capability, allowing quick, conclusive assessment of batteries up to 1000 CCA. With dual gauges, it is easy to manage the testing process and observe the results - load control is smooth ...



[1874 12 Volt Carbon Pile Battery Load Tester](#)

The 1874 provides variable load carbon pile testing capability, allowing quick, conclusive assessment of batteries up to 1000 CCA. With dual gauges, it is easy to manage the testing process and observe the results - load control is smooth ...



Contact Us

For catalog requests, pricing, or partnerships, please visit:
<https://www.conrad.edu.pl>