

# Solar controller to battery cable size





## Overview

---

The correct cable size from your solar charge controller to your battery depends on the current (amps), voltage, distance, and acceptable voltage drop—typically 4 AWG to 10 AWG is used.

The correct cable size from your solar charge controller to your battery depends on the current (amps), voltage, distance, and acceptable voltage drop—typically 4 AWG to 10 AWG is used.

The wires connecting the charge controller to the battery have to be the right size to get the best results. The cables transmit current from the different parts of the PV system, so you need to use the optimum wire gauges. The cable connecting the charge controller and battery can be the same size.

The correct cable size from your solar charge controller to your battery depends on the current (amps), voltage, distance, and acceptable voltage drop—typically 4 AWG to 10 AWG is used. Choosing the right cable size is not just a technical detail—it's critical for safety, performance, and.

Below you'll find a calculator that will help you find the right cable size to connect your solar charge controller to your battery, along with a couple of examples that will make this more comprehensive. What size cable from solar charge controller to battery?

The size of the cable that you need.

When setting up a solar energy system, it's essential to understand the importance of properly sizing the wires that connect the solar charge controller to the battery bank. In this guide, we will explore the significance of wire size, its impact on system performance, and provide you with.

The wire size from a solar charge controller to a battery depends on the current, or amperage, and the distance between the two components. However, commonly used wire sizes for such setups range from 8 AWG to 10 AWG. You may find the exact wire size you need by using a wire gauge calculator and.



If the distance between the solar panel array and the charge controller is 13ft, 10 gauge wires would be the right size to use by referring to the "Electrical cable size chart amps" chart. Tray Cable (Model: RNG-TRAYCB, sold in pairs) Formula to calculate the current capacity required for the wire: . What size wire does a solar charge controller use?

The wire size from a solar charge controller to a battery depends on the current, or amperage, and the distance between the two components. However, commonly used wire sizes for such setups range from 8 AWG to 10 AWG. You may find the exact wire size you need by using a wire gauge calculator and confirming with your system's specifications.

How to choose a solar charge controller & battery?

The cables transmit current from the different parts of the PV system, so you need to use the optimum wire gauges. The cable connecting the charge controller and battery can be the same size as the one on the solar array. The further the controller is from the battery, the thicker the cable needs to be.

What is a solar charge controller to battery cable?

The purpose of this cable is to transfer the energy harnessed by the solar panels—from the solar charge controller—to the batteries for storage. The charge controller to battery cable plays an integral role in transferring power, helping to regulate the system's voltage and stop (or redirect) the flow of current to prevent overcharging.

How to choose a wire gauge for a solar charge controller?

By selecting the appropriate wire gauge for the connection between the solar charge controller and battery bank, you ensure optimal system performance, minimize voltage drop, and promote safety. Remember to consider the maximum current, wire length, and ambient temperature when determining the wire size.

How to connect a solar controller to a battery?

Select the correct wire size and prepare it by cutting it to the appropriate length and stripping the ends. Connect one end of the cable to the respective terminal on your solar controller. Attach the other end to the corresponding terminal on the battery. Switch the charge controller back on and monitor the voltage.



## How to connect a charge controller to a battery?

The wires connecting the charge controller to the battery have to be the right size to get the best results. The cables transmit current from the different parts of the PV system, so you need to use the optimum wire gauges. The cable connecting the charge controller and battery can be the same size as the one on the solar array.



## Solar controller to battery cable size

---

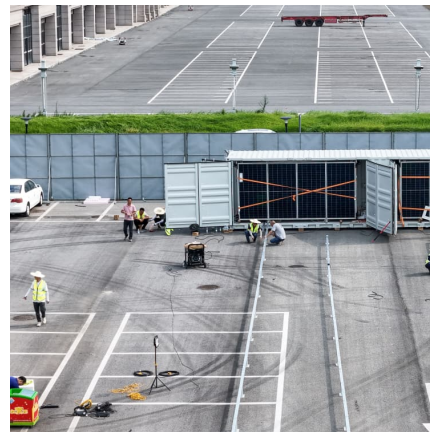


### [Charge Controller to Battery Wire Size Guide](#)

Solar cable wire sizes are based on standard AWG, so you should have no problem finding one. The following table lists the most widely used solar controllers and the corresponding wire sizes.

### What size cable from solar charge controller to battery?

Below you'll find a calculator that will help you find the right cable size to connect your solar charge controller to your battery, along with a couple of examples that will ...



### [What Size Cable From Solar Controller To Battery](#)

The wire size from a solar charge controller to a battery depends on the current, or amperage, and the distance between the two components. Commonly used wire sizes ...

### What Size Wire from Solar Charge Controller to Battery: Your

The right charge controller to battery wire size is crucial for an efficient solar system. This guide aims to equip you with a thorough understanding



and practical skills to ...



### What Size Wire from Solar Charge Controller to Battery? The ...

Choosing the correct wire size from solar charge controller to battery isn't just about compliance - it's about safety, efficiency, and getting the most juice from your solar ...



### [Sizing Wires for PV Systems - Renogy US](#)

Get guidance on selecting wire gauge based on cable length and current requirements for different components in your PV system, including solar panels, charge controllers, battery ...



### [What Size Wire from Solar Charge Controller to ...](#)

The right charge controller to battery wire size is crucial for an efficient solar system. This guide aims to equip you with a thorough understanding and practical skills to calculate the appropriate wire size for your ...



### [How to Calculate Wire Size for Solar System](#)

In this article, I will show you how you can calculate the wire size of a solar power system. From the solar panels to the battery. These will be easy.



### [Charge Controller to Battery Wire Size Guide - ECGSOLAX](#)

Maximize your solar system's efficiency! Get the guide to wire sizing for charge controller to battery connection. Embrace renewable energy today!

### **What Size Cable Do I Need from Solar Controller to Battery?**

The correct cable size from your solar charge controller to your battery depends on the current (amps), voltage, distance, and acceptable voltage drop--typically 4 AWG to 10 ...



### **Wire size after the charge controller , DIY Solar Power Forum**

The cable size from the charge controller to the battery should be whatever wire meets or exceeds the output amp rating of the charge controller. Regardless of whether ...



### What size cable from solar charge controller to battery?

Below you'll find a calculator that will help you find the right cable size to connect your solar charge controller to your battery, along with a couple of examples that will make this more comprehensive.



### [Charge Controller to Battery Wire Size Guide - ...](#)

Maximize your solar system's efficiency! Get the guide to wire sizing for charge controller to battery connection. Embrace renewable energy today!

## Contact Us

---

For catalog requests, pricing, or partnerships, please visit:  
<https://www.conrad.edu.pl>