

# Solar panel capacity kwh





## Overview

---

A 1 kilowatt (1 kW) solar panel system may produce roughly 850 kWh of electricity per year. However, the actual amount of electricity produced is determined by a variety of factors such as roof size and condition, peak solar exposure hours, and the number of panels. How many kWh does a solar panel produce?

Consider a solar panel with a power output of 300 watts and six hours of direct sunlight per day. The formula is as follows:  $300\text{W} \times 6 = 1800$  watt-hours or 1.8 kWh. Using this solar power calculator kWh formula, you can determine energy production on a weekly, monthly, or yearly basis by multiplying the daily watt-hours by the respective periods.

How many kWh does a 300W solar panel produce a day?

We can see that a 300W solar panel in Texas will produce a little more than 1 kWh every day (1.11 kWh/day, to be exact). We can calculate the daily kW solar panel generation for any panel at any location using this formula. Probably, the most difficult thing is to figure out how much sun you get at your location (in terms of peak sun hours).

What is a solar panel kWh calculator?

Solar Panel kWh Calculator: kWh Production Per Day, Month, Year - The Green Watt: The Green Watt focuses on renewable energy topics, offering tools and calculators that empower users to estimate solar energy production.

How much electricity does a 1 kilowatt solar system produce?

A 1 kilowatt (1 kW) solar panel system may produce roughly 850 kWh of electricity per year. However, the actual amount of electricity produced is determined by a variety of factors such as roof size and condition, peak solar exposure hours, and the number of panels.

How many kWh does a 100 watt solar panel produce?



The calculator will do the calculation for you; just slide the 1st wattage slider to '100' and the 2nd sun irradiance slider to '5.79', and you get the result: A 100-watt solar panel installed in a sunny location (5.79 peak sun hours per day) will produce 0.43 kWh per day.

What is solar panel capacity?

Solar panel capacity, often known as peak sun capacity, refers to the maximum quantity of power that may be produced under perfect conditions. It is frequently measured in watts per square meter of panel area. Domestic solar panel setups typically range in capacity from 1 kW to 4 kW.



## Solar panel capacity kwh

---



### [How Much Power Does A Solar Panel Produce?](#)

While solar panel systems start at 1 KW and produce between 750 and 850 Kilowatt hour (KwH) annually, larger homes and bigger households typically want to be on the higher end.

### [Solar Panel Output Calculator , Get Maximum Power ...](#)

Use Solar Panel Output Calculator to find out the total output, production, or power generation from your solar panels per day, month, or in year.

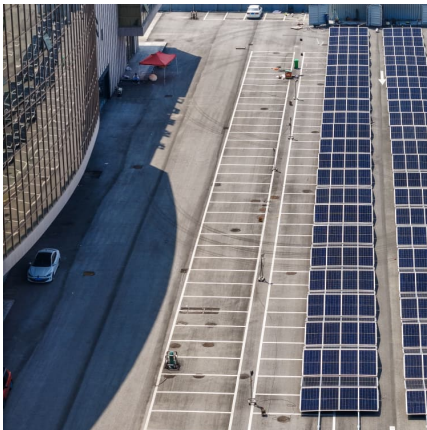


### [How many kWh does a solar panel produce?](#)

Want to learn how much power a solar panel produces? We'll break down what you need to know and how to calculate your solar panel's energy production.

### **How to Calculate Daily kWh from Your Solar Panels - EcoVault**

Calculate how many kWh a solar panel produces daily with our easy formula + chart. Learn how panel size and peak sun hours impact energy output in your state.



### How to Calculate Solar Panel kWh

A 1 kilowatt (1 kW) solar panel system may produce roughly 850 kWh of electricity per year. However, the actual amount of electricity produced is determined by a variety of factors such as roof size and condition, ...

### How Much Energy Does A Solar Panel Produce?

On average, a solar panel can output about 400 watts of power under direct sunlight, and produce about 2 kilowatt-hours (kWh) of energy per day. Most homes install around 18 solar panels, ...



### Solar Panel Output Calculator , Get Maximum Power Output

Use Solar Panel Output Calculator to find out the total output, production, or power generation from your solar panels per day, month, or in year.



### [How Much Energy Does A Solar Panel Produce?](#)

Calculate how many kWh a solar panel produces daily with our easy formula + chart. Learn how panel size and peak sun hours impact energy output in your state.

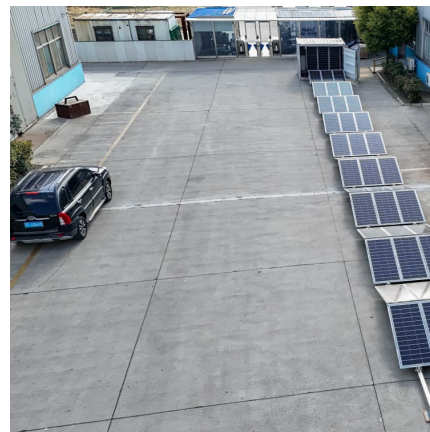


### [How Many kWh Does A Solar Panel Produce Per Day?](#)

To illustrate how many kWh different solar panel sizes produce per day, we have calculated the kWh output for locations that get 4, 5, or 6 peak sun hours. Here are all the results, gathered in ...

### **How to Calculate Solar Panel kWh**

A 1 kilowatt (1 kW) solar panel system may produce roughly 850 kWh of electricity per year. However, the actual amount of electricity produced is determined by a ...



### [How many kWh does a solar panel produce?](#)

Want to learn how much power a solar panel produces? We'll break down what you need to know and how to calculate your solar panel's energy production.



## Contact Us

---

For catalog requests, pricing, or partnerships, please visit:  
<https://www.conrad.edu.pl>