

Solar panels how many kwh per panel





Overview

A 400-watt panel can generate roughly 1.6–2.5 kWh of energy per day, depending on local sunlight. To cover the average U.S. household's 900 kWh/month consumption, you typically need 12–18 panels. Output depends on sun hours, roof direction, panel technology, shading, temperature and age. How many kWh does a solar panel produce?

Consider a solar panel with a power output of 300 watts and six hours of direct sunlight per day. The formula is as follows: $300\text{W} \times 6 = 1800$ watt-hours or 1.8 kWh. Using this solar power calculator kWh formula, you can determine energy production on a weekly, monthly, or yearly basis by multiplying the daily watt-hours by the respective periods.

How many solar panels per day?

Find your local peak sun hours (consult a solar map or use an estimate). For example, if you use 30 kWh per day, have 4.5 sun hours and plan to install 400 W panels: $400\text{ W} \times 4.5 = 1,800\text{ Wh}$ (1.8 kWh) per panel per day. $30\text{ kWh} \div 1.8\text{ kWh} \approx 17$ panels.

How much energy does a 300 watt solar panel produce?

A 300-watt solar panel will produce anywhere from 0.90 to 1.35 kWh per day (at 4-6 peak sun hours locations). A 400-watt solar panel will produce anywhere from 1.20 to 1.80 kWh per day (at 4-6 peak sun hours locations). The biggest 700-watt solar panel will produce anywhere from 2.10 to 3.15 kWh per day (at 4-6 peak sun hours locations).

How many kWh does a 100 watt solar panel produce?

The calculator will do the calculation for you; just slide the 1st wattage slider to '100' and the 2nd sun irradiance slider to '5.79', and you get the result: A 100-watt solar panel installed in a sunny location (5.79 peak sun hours per day) will produce 0.43 kWh per day.

How much energy does a 400 watt solar panel produce?



A 400-watt solar panel will produce anywhere from 1.20 to 1.80 kWh per day (at 4-6 peak sun hours locations). The biggest 700-watt solar panel will produce anywhere from 2.10 to 3.15 kWh per day (at 4-6 peak sun hours locations). Let's have a look at solar systems as well:.

How much energy does a solar panel system need?

A typical American household would need around 10,000 kWh per year. A 20 to 30 panel system should generate enough power to cover annual energy needs. But, just as every home and family is different, the same is true for the solar panel systems that will accommodate their habits and needs.



Solar panels how many kwh per panel

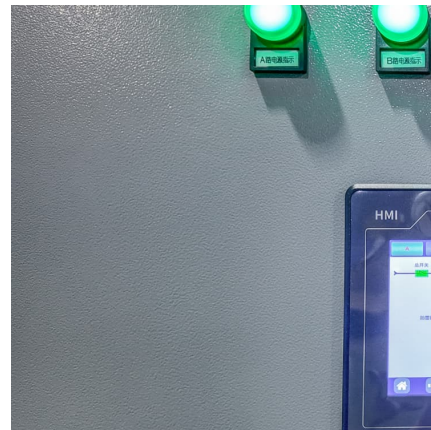


How Much Power Does a Solar Panel Produce?

Based on our energy output estimates for a location with five sunlight hours, a 500-watt solar panel would produce approximately 2.5 kWh: $500 \text{ watts} \times 5 \text{ hours} = 2,500 \text{ watts}$ OR approximately 2.5 kWh per day.

How Much Power Does a Solar Panel Produce?

Based on our energy output estimates for a location with five sunlight hours, a 500-watt solar panel would produce approximately 2.5 kWh: $500 \text{ watts} \times 5 \text{ hours} = 2,500 \text{ watts}$...



How Much Energy Does A Solar Panel Produce? - Forbes Home

While solar panel systems start at 1 KW and produce between 750 and 850 Kilowatt hour (KwH) annually, larger homes and bigger households typically want to be on the higher end.

How Much Energy Does A Solar Panel Produce?

While solar panel systems start at 1 KW and produce between 750 and 850 Kilowatt hour (KwH) annually, larger homes and bigger households typically want to be on the higher



end.



How many kWh does a solar panel produce?

Depending on its wattage, an average solar panel may produce anywhere from 25 kWh to 60 kWh per month. To calculate a solar panel's monthly production in kilowatt ...



How to Calculate Solar Panel kWh

A 1 kilowatt (1 kW) solar panel system may produce roughly 850 kWh of electricity per year. However, the actual amount of electricity produced is determined by a ...



How Much Energy Does A Solar Panel Produce? , EnergySage

You can calculate your estimated annual solar energy production by multiplying your solar panel's wattage by your production ratio. For example, a 450-watt panel in California ...





[How Many kWh Does a Solar Panel Produce?](#)

The kWh production of a solar panel depends on factors such as sunlight intensity, panel efficiency, orientation, shading, and panel type, with monocrystalline panels typically producing between 1 to 2.4 kWh per day on ...



[How Much Energy Does A Solar Panel Produce?](#)

On average, a solar panel can output about 400 watts of power under direct sunlight, and produce about 2 kilowatt-hours (kWh) of energy per day. Most homes install around 18 solar panels, ...

How to Calculate Daily kWh from Your Solar Panels - EcoVault

Calculate how many kWh a solar panel produces daily with our easy formula + chart. Learn how panel size and peak sun hours impact energy output in your state.



[How Much Energy Does A Solar Panel Produce?](#)

A 400-watt panel can generate roughly 1.6-2.5 kWh of energy per day, depending on local sunlight. To cover the average U.S. household's 900 kWh/month ...



[How Much Energy Does A Solar Panel Produce?](#)

A 400-watt panel can generate roughly 1.6-2.5 kWh of energy per day, depending on local sunlight. To cover the average U.S. household's 900 kWh/month consumption, you typically need 12-18 panels. Output depends on ...



How to Calculate Solar Panel kWh

A 1 kilowatt (1 kW) solar panel system may produce roughly 850 kWh of electricity per year. However, the actual amount of electricity produced is determined by a variety of factors such as roof size and condition, ...

[How to Calculate Daily kWh from Your Solar Panels - ...](#)

Calculate how many kWh a solar panel produces daily with our easy formula + chart. Learn how panel size and peak sun hours impact energy output in your state.



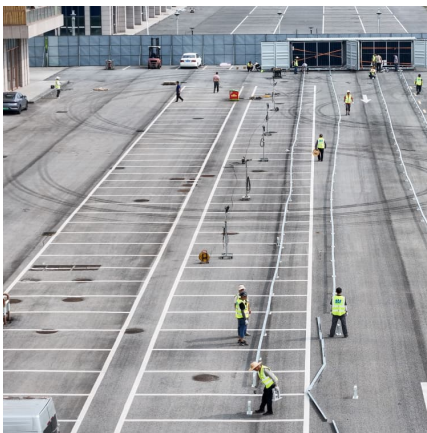
[How Many kWh Does a Solar Panel Produce?](#)

The kWh production of a solar panel depends on factors such as sunlight intensity, panel efficiency, orientation, shading, and panel type, with monocrystalline panels typically producing ...



How Many kWh Does A Solar Panel Produce Per Day?

To illustrate how many kWh different solar panel sizes produce per day, we have calculated the kWh output for locations that get 4, 5, or 6 peak sun hours. Here are all the results, gathered in ...



How many kWh does a solar panel produce?

Depending on its wattage, an average solar panel may produce anywhere from 25 kWh to 60 kWh per month. To calculate a solar panel's monthly production in kilowatt-hours, multiply

How Much Energy Does A Solar Panel Produce?

You can calculate your estimated annual solar energy production by multiplying your solar panel's wattage by your production ratio. For example, a 450-watt panel in California will produce about 675 kWh in a year, or about 1.8 ...



Contact Us

For catalog requests, pricing, or partnerships, please visit:
<https://www.conrad.edu.pl>