

The function of the liquid level gauge of the steam energy storage tank





Overview

Enables monitoring of liquid level in storage tanks by visual indication. Typical applications include continuous monitoring of level in steam boilers and liquid tanks, both above ground and underground for the chemical industry .

Enables monitoring of liquid level in storage tanks by visual indication. Typical applications include continuous monitoring of level in steam boilers and liquid tanks, both above ground and underground for the chemical industry .

Level gauges are meters used to determine the level of a liquid in a fixed storage or process tank. The gauge is composed of several parts including head, float, measuring tape, bottom anchored bracket, guide wires, elbows, anchors, coupling, pipe support brackets, and pipework. Liquid level gauge.

The control of liquid levels, for example in a process tank, is an important function. An example would be a hot water tank where water is removed, perhaps for washing down, and the level needs to be restored ready for the next wash cycle. Control of water level and alarms for steam boilers is.

The level device combines a magnetic level indicator (MLI) with a 6 GHz FMCW radar. The MLI functions as a bypass chamber. It is installed near the bottom of the tank where it is close to the liquid level. In this way, it acts as a wave guide for the FMCW radar mounted on its top. The KROHNE device.

Magnetic Level Gauge is a level indicator which is used to provide high clarity indication of a liquid level using bi-color magnetic flaps. It is a safe alternative to glass based indicator and can also be used as level controller. Enables monitoring of liquid level in storage tanks by visual.

A gauge located inside a storage tank that is capable of constantly monitoring the level of liquid inside the tank. Two basic types of gauges are available, mechanical and electronic. Mechanical gauges consist of a float connected to a metal tape, similar to a carpenter's measuring tape. This tape.

A level gauge is a meter used to determine the level of a liquid in a fixed storage or process tank. It consists of several parts, including a head, float,



measuring tape, and other components. What is a liquid level gauge?

A liquid level gauge is a device used to measure the level of liquid in a. What is a level gauge?

Level gauges are meters used to determine the level of a liquid in a fixed storage or process tank. The gauge is composed of several parts including head, float, measuring tape, bottom anchored bracket, guide wires, elbows, anchors, coupling, pipe support brackets, and pipework.

What is a liquid level gauge?

The gauge is composed of several parts including head, float, measuring tape, bottom anchored bracket, guide wires, elbows, anchors, coupling, pipe support brackets, and pipework. Liquid level gauge calibration is used to ensure proper readings are obtained when using level gauges. Image Credit: Babbitt International Inc.

What is the difference between a water level gauge and a mechanical level gauge?

Water level gauges - A water level gauge is used for measuring the rise and fall of water levels. Mechanical level gauges - A mechanical level gauge monitors levels of underground storage tanks. Level gauges take level readings using several different techniques. The measurement technology should be chosen based on the user's application.

How does a boiler level gauge work?

The gauge uses high quality mica sheets to guard against the wet steam generated in a boiler drum. The level is detected by distinguishing the index of refraction between the steam and water. Bi-color level gauges are a transparent gauge that has a liquid chamber in a wedge shaped section.

What is a tank level gauge used for?

Tank level gauges - A tank level gauge is used in tank volume monitoring. Fuel level gauges - A fuel level gauge provides a direct fuel level reading for vehicles and equipment. The two main parts of a fuel gauge are the sender and the gauge. The sender measures the fuel level in the tank and the gauge displays the level to the user.

What is magnetic level gauge?



Magnetic Level Gauge is a level indicator which is used to provide high clarity indication of a liquid level using bi-color magnetic flaps. It is a safe alternative to glass based indicator and can also be used as level controller. Enables monitoring of liquid level in storage tanks by visual indication.



The function of the liquid level gauge of the steam energy storage tank



Liquid Level Control System

This principle of operation is utilized by the liquid level system. Working of Liquid Level Systems
The crucial components of the water level control system are ...

[Liquid Level Measurement by Level Gauges \(Sightglasses\)](#)

The only way to ensure proper two-part liquid interface level indication in a sightglass is to keep both ports (nozzles) submerged:
Temperature Problems with Level Gauges
Another ...



[Buyer's Guide: Tank level indicators & Gauges for ...](#)

Tank level indicators are level gauges that can measure and display the level of industrial liquid storage tanks. Liquid level refers to the level ...



[Common Tank Gauging Technologies and How They ...](#)

Float and Tape Tank Gauging These instruments have been the liquid level measurement technique of the petroleum tank gauging market



for over 90 ...



Level and pressure instrumentation for energy production

Level measurement and point level detection in storage tanks for acids The raw water, which is usually extracted from a river, cannot be fed untreated directly into the turbine circuit of the plant.



Magnetic Level Gauges: Types and Functions in Liquid Level ...

In summary, magnetic level gauges are an essential tool for accurate and reliable liquid level monitoring across a wide range of industries and applications. With their various types and ...



[Techtrol Glass Type Level Gauges for Visual Level ...](#)

Level gauges, also termed as level indicators are widely used in industry for visual level indication of liquids in process equipment like storage tanks or ...





Research on magnetostrictive liquid level gauge for water level

The accurate measurement of the water level on the secondary side of the steam generator (SG) plays a crucial role in the safe and stable operation of the primary and ...



[5 Methods for Measuring Chemical Storage Tank Levels](#)

5. Ultrasonic Gauge One of the most accurate ways to measure the levels of Chemical Storage tanks is using an ultrasonic gauge. This method uses high ...

Development of liquid level measurement technology: A review

An example of a static measurement is measuring a slow-moving liquid in a tank, whereas a dynamic involves oscillation, noise levels, etc. Based on the measurement metrics, ...



Tank Gauging Basics

Storage Tanks There is a wide range of storage tanks found throughout the oil & gas industry. Depending on the tank type or mounting options, a particular tank gauge or measurement ...



Liquid Storage Tank Level Measurement , Mid-West Instrument

For open tanks, achieving accurate level measurements necessitates installing the differential pressure instrument at the bottom of the tank. This strategic placement ensures that the ...



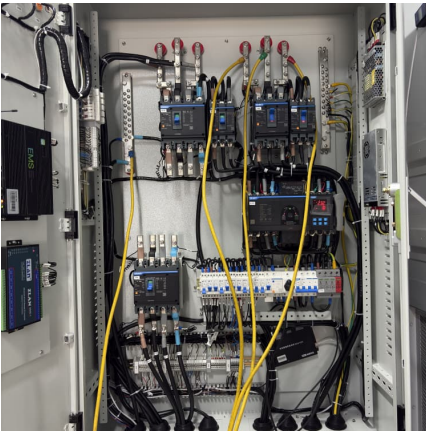
Tank gauging instrument

Level indication of petroleum products such as crude oil, kerosene, light and heavy oil, vegetable oil, palm oil, seed oil and animal oil, highly viscous liquid such as asphalt, certain chemicals ...

Liquid Level Gauges

The Seetru 'G35' Seemag® Magnetic Gauge The Seetru Seemag® tank content indicator or gauge is a high quality yet economical magnetic level indicator. Its unique design offers ...





[Level-Trac & Steam-Trac Steam/Condensate Level Systems](#)

The condensate level in the drum becomes apparent in a manner similar to the conductivity system. The detection level is independent of water purity and boiler operating conditions. The ...

[An Illustrated Guide to Steam Boiler Systems](#)

It typically includes a water storage tank, pumps, and valves to control the water level and pressure in the boiler. The control system is the brain of the steam ...



Level Indicators Working Principle

Working principle Apart from glass tube level gauges, transparent level gauges are always fitted with two plate transparent glasses between which the fluid is contained. The ...

[Level Gauges: Types, Applications, and Limitations](#)

Explore different types of level gauges, their uses, and how to select the right one for your needs in our expert guide Level gauges are essential instruments ...



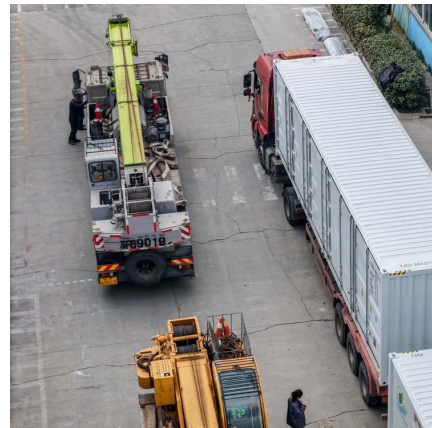
[Tech Talk: \(3\) Applying Liquid Level Measurement](#)

Institute of Measurement & Control, Billingham, UK Liquid-level measurement is often the key to safe and reliable process plant operation and covers both point and continuous level ...



Liquid Level

2.4 Liquid and solid level measurement
Measuring the height of liquid or measurement of level of interface formed by different liquids present in the storage vessel, considering the properties of ...



Techtrol Glass Type Level Gauges for Visual Level Indication of Liquids

Level gauges, also termed as level indicators are widely used in industry for visual level indication of liquids in process equipment like storage tanks or process vessels or drums.





[A dozen ways to measure fluid level and how they work](#)

A rigid probe or flexible cable antenna system guides the microwave down from the top of the tank to the liquid level and back to the transmitter. As with through-air radar, a change from a lower ...



Automatic Tank Gauging System

The Automatic Tank Gauge (ATG) system plays a crucial role in the management and monitoring of fuel tanks. Used predominantly in fuel storage and distribution operations, ATG systems ...

Contact Us

For catalog requests, pricing, or partnerships, please visit:
<https://www.conrad.edu.pl>