

Total investment cost of C





Overview

How to calculate total investment cost?

Calculating Total Investment Cost involves adding up all the components mentioned earlier. Start by determining the purchase price of the security or asset, then add the brokerage commissions, management fees, administrative costs, and other expenses.

What is total cost?

Total cost is the sum of all the expenses incurred to acquire, implement, operate, and maintain an investment. It includes both the initial cost and the ongoing or recurring costs of the investment. It measures how much money or resources are spent or consumed as a result of the investment.

What is cost investment?

Cost investment is the process of evaluating the total amount of money that is required to acquire, operate, maintain, and dispose of an asset or a project. By comparing the cost investment with the expected benefits, investors can assess the profitability and viability of their choices.

What are capital investments?

Capital investments: These are investments in long-term assets, such as machinery, equipment, buildings, or land, that are expected to generate income or savings over time. Capital investments typically have high initial costs, but low operating and maintenance costs.

What is total investment cost (Tic)?

The term 'total investment cost' (TIC) refers to the total investment cost required to complete a project. The total investment cost (TIC) includes all expenses from concept to completion, including planning, design, construction costs, wages and salaries, materials, financing costs, and a financial buffer for project contingencies.



What are the components of investment cost?

It is usually divided into several components, such as purchase price, brokerage fees, commissions, taxes, and other expenses. This initial investment cost serves as the basis for calculating capital gains or losses when the asset is eventually sold.



Total investment cost of C

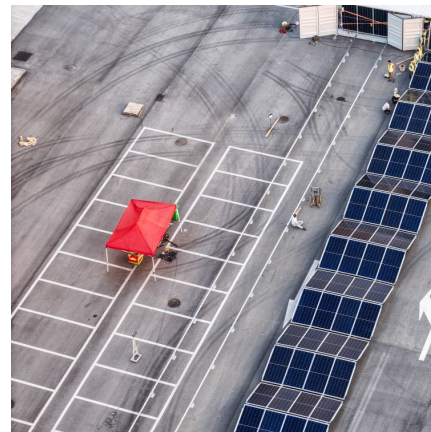


Investment Cost Calculations in the Process Industry ...

It's essential for the client or the individual overseeing the total investment budget to comprehend how to interpret the calculated investment cost estimate and consider the anticipated uncertainty.

Crunching the Numbers: A Comprehensive Guide to Calculating ...

However, calculating the total investment cost can be a complex task, especially for novice investors. In this article, we will delve into the world of investment costs, exploring the various ...



Cost of Investment

Investment cost is the total amount of money spent to acquire an asset or make an investment. It is different from market value and remains constant. Usually, the cost of ...

Estimation of capital

C is the total capital cost, F is the installation factor also known as Lang factor, and C_e is the cost of major equipment. Lang factor is 3.1 for solid processing plant and 4.74 ...



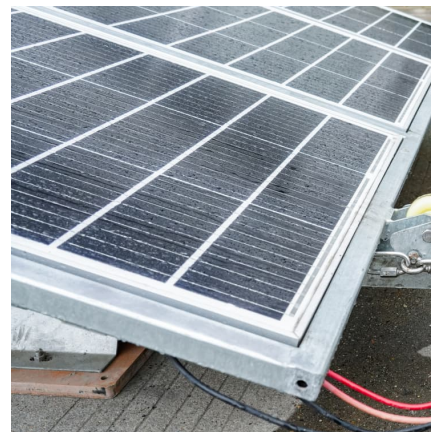
Appendix D: Capital Cost Guidelines

BM cost + contractors fees (3-5 % BM) + contingency for unexpected delays (10-15 % BM) + design contingency for changes in scope during construction (10-30 % BM) = Fixed capital ...



Total Cost of Ownership (TCO)

The total cost of ownership (TCO) is a management accounting concept that derives an asset's total cost during its useful life. It includes the purchase price, maintenance and operational cost that will incur during the asset's lifespan. ...



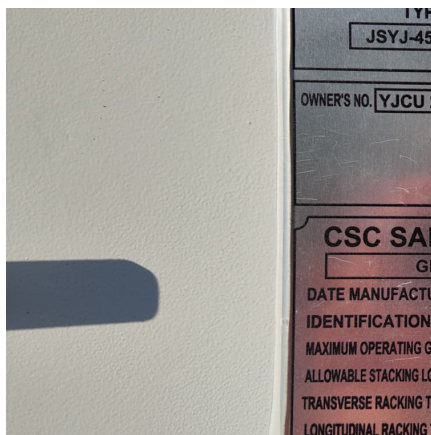
Total Cost of Ownership (TCO)

The total cost of ownership (TCO) is a management accounting concept that derives an asset's total cost during its useful life. It includes the purchase price, maintenance and operational cost ...



Investment cost optimization for industrial project portfolios using

In regular investment cost optimization, investment cost of each item is calculated independently and the lowest investment cost item has the highest priority. In this example A-B ...



ROI Essentials: A Beginner's Guide to Calculating and ...

Return on investment (ROI) is a financial metric used to evaluate the efficiency or profitability of an investment. It measures the amount of return on a particular investment relative to the investment's cost. This metric ...

[Total Investment Cost: NFB Asset Management ...](#)

Total Investment Cost (TIC) is a very useful tool that enables investors to have an accurate understanding of the actual costs incurred when investing in collective investment schemes (CIS's, unit trusts). Efficient cost ...



[Estimation of Initial Investment . Complete Guide](#)

Learning the estimation of initial investment is a crucial step in capital budgeting, as it determines the total upfront cost required to launch a project. Whether expanding an existing business or replacing outdated assets, understanding ...



total-cost-of-investing

Total cost of investing: Improving outcomes for Europe's retail investors
Authors Georgina Yarwood, Investment Strategy Group Paul McGhee, European Public Policy Andy Reed, PhD, ...



[What Is Return on Investment \(ROI\) and How to ...](#)

Return on investment (ROI) is a performance measure used to evaluate the efficiency of an investment or compare the efficiency of several investments.

Cost of Investment

The cost of investment, often referred to as the cost basis, is the original value of an investment at the time of purchase. It represents the total amount of money paid to acquire ...





Investment, capital stock, and replacement cost of assets when ...

This paper extends the Q -theory of investment to capital goods with arbitrary efficiency profiles. When efficiency is non-geometric, the firm's capital stock and the ...

[How to Calculate the Cost of Investment? \(With Example\)](#)

This article will guide you to calculate the cost of investment! The cost of an investment includes acquisition charges such as brokerage, fees and duties.



Cost of electricity by source

The cost of a solar PV module make up the largest part of the total investment costs. As per the 2021 analysis of Solar Power Generation Costs in Japan, module unit prices fell sharply.

[Components of Total Cost o MBA Notes by TheMBA stitute](#)

Embark on a journey to explore the fundamental components of total cost, unraveling their significance in financial analysis and management decisions.



Cost Estimation? ???

???? ??? ??? EPC ??? ??? #????(Total Investment Cost) ?? ? ??? ?? ? ??? ??? #EPC_CAPEX ??? ???
???? ????. ?? EPC Cost? ??? ?? ?? ??? ...



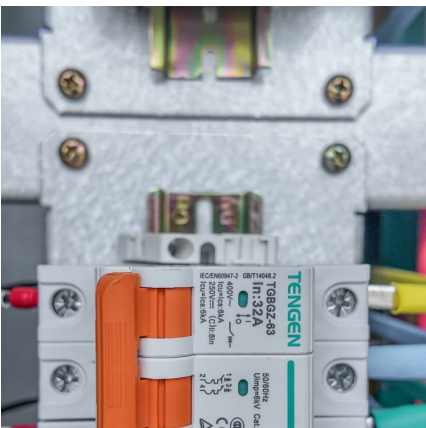
Total cost definition

Total Cost for Investments Total cost refers to all of the costs incurred to make an investment, which includes the cost of the investment, plus any broker commissions, taxes, ...



A Discussion on Return Metrics: IRR, Interest Rate, Return-on-Cost...

In the world of real estate private equity (REPE), investors rely on a variety of financial metrics to evaluate the performance and potential of their investments. Four key ...





What Is Meant by Total Investment?

When starting a new business, the total investment can be the projected cost of beginning the business (this use comes up frequently in franchises, where the parent company has a history of previous business ventures and a good idea ...



Cost Investment: ROI vs: Total Cost: Making Informed Investment

When making cost investment decisions, it is important to consider both the return on investment (ROI) and the total cost of ownership (TCO) of the investment. ROI ...

Investment Costs , I , Definitions , Accounting Terms Lexicon

Definition Investment costs refer to the total expenditures associated with acquiring, installing, and maintaining investments or assets. These costs can include the purchase price, installation ...



Contact Us

For catalog requests, pricing, or partnerships, please visit:
<https://www.conrad.edu.pl>