

What battery to use with 100 watt solar panel





Overview

100W solar panels are compatible with 12V batteries. You can choose a 50 amp or 100 amp Lead-Acid or Lithium-ion battery for 100W solar panels. You will have to use a battery double the capacity of your solar panel's output.

100W solar panels are compatible with 12V batteries. You can choose a 50 amp or 100 amp Lead-Acid or Lithium-ion battery for 100W solar panels. You will have to use a battery double the capacity of your solar panel's output.

If you're considering using a 100-watt solar panel, understanding the right battery to pair with it is crucial for maximizing efficiency and ensuring you have a reliable power source. In this article, we will explore everything you need to know about selecting the best battery for your 100-watt.

Daily Energy Generation: A 100-watt solar panel can produce up to 500 watt-hours daily with 5 hours of sunlight; understanding this helps in battery sizing. Battery Capacity Requirements: Opt for a battery with at least 100 amp-hours (Ah) for optimal performance with a 100-watt solar panel.

100W solar panels are compatible with 12V batteries. You can choose a 50 amp or 100 amp Lead-Acid or Lithium-ion battery for 100W solar panels. You will have to use a battery double the capacity of your solar panel's output. Before everything else, you should also know that a 100W solar panel is.

The best way to use your 100-watt solar panel is to hook it up to the right battery. Batteries store excess power to keep your electricity running on cloudy days and at night. We are here to tell you all about batteries you may need for 100-watt solar panels. You will learn about the types of.

A 100W solar panel can charge a variety of battery sizes, from small 12V batteries to large 24V batteries. The size of the battery will determine how long it takes to charge and how much power is stored. Solar panels are devices that capture energy from the sun and convert it into electricity. A.

The number of batteries required for a 100W, 500W and 1000W solar panel system depends on different factors, such as: If you utilize a larger battery or



more batteries, you will most likely need to enlarge your solar array as well. Moreover, charging larger or more batteries may take a long time. Which battery should I use for a 100W solar panel?

You can choose a 50 amp or 100 amp Lead-Acid or Lithium-ion battery for 100W solar panels. You will have to use a battery double the capacity of your solar panel's output. Before everything else, you should also know that a 100W solar panel is compatible with 12V batteries. In other words, you must use 12V batteries with 100W solar panels.

Can a 100 watt solar panel charge a 12V battery?

Yes, a 100 watt solar panel can charge a 12V battery. In fact, one 100Ah 12V battery can be fully charged by a 100 watt 12V solar panel. However, charging larger batteries or multiple batteries may take a longer time.

What kind of batteries can I use with my solar panels?

There are two types of batteries you can use with your solar panels. Lead-Acid batteries and Lithium-Ion batteries are compatible with the solar energy system. For Lead-Acid batteries, you will require almost double the capacity of the output of your solar panel to store electricity.

Can a 100W solar panel charge a 50W battery?

So, if you use a 100W solar panel, you can fully charge a 50W solar panel from zero in 6 hours. A lot of other factors are related to it. However, you can also use a 100W solar panel for a 100Ah battery. But, you will need at least two of them for a better result.

What inverter do I need for a 100 watt solar panel?

What size inverter do I need for a 100-watt solar panel?

A safe bet would be to have a 10-amp charge controller for a 100W solar panel with a 12V battery bank. Inverters work to convert the electricity flowing from your battery from direct current (DC) into alternating current (AC).

Which solar battery should I use for my RV?

For your RV's solar panel, lead-acid batteries are the most cost-effective energy storage option. They are commonly used in RV solar setups. To ensure optimal performance, you should not run your lead acid battery below 50%



capacity and have a solar battery with the capacity to store twice the daily amount of your panel's output.



What battery to use with 100 watt solar panel



How Many Batteries are Needed for a 100W, 500W and 1000W Solar Panel?

One 100Ah 12V battery will power one 100-watt 12V solar panel. You may determine that you require a larger battery or two batteries for your solar setup after assessing your power ...

The Ultimate Guide: What Battery to Use With a 100 Watt Solar Panel

Fun fact: A 100W panel produces about 300-600Wh daily (depending on sunlight). Pair it with a 100Ah LiFePO4 battery, and you've got enough juice to power a mini ...



The Ultimate Guide: What Battery to Use With a 100 Watt Solar ...

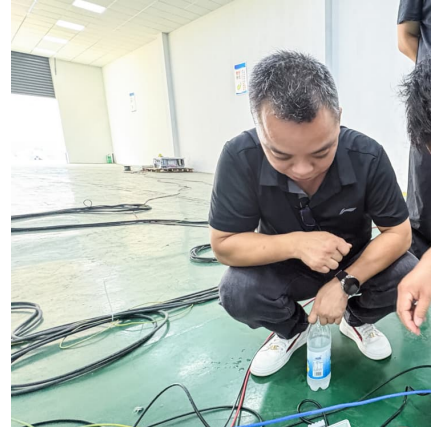
Fun fact: A 100W panel produces about 300-600Wh daily (depending on sunlight). Pair it with a 100Ah LiFePO4 battery, and you've got enough juice to power a mini ...

What Size Battery for 100 Watt Solar Panel: A Complete Guide to ...

Discover how to choose the ideal battery size for your 100-watt solar panel in our comprehensive guide. We break down key factors like daily



energy requirements, battery ...



[What Size Battery Will a 100W Solar Panel Charge?](#)

A single 100 Ah 12V battery typically suffices for a single 100-watt solar panel. Under ideal conditions, this basic setup provides adequate storage for the energy produced.



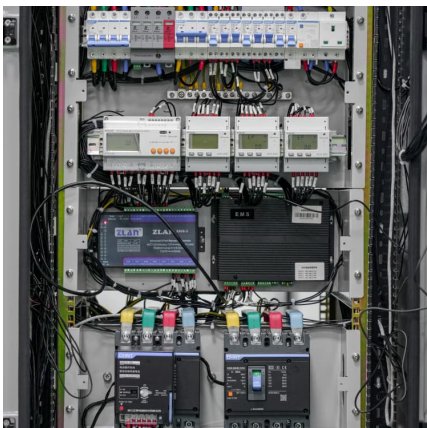
[What Size Battery For 100w Solar Panel?](#)

You can choose a 50 amp or 100 amp Lead-Acid or Lithium-ion battery for 100W solar panels. You will have to use a battery double the capacity of your solar panel's output.



How Many Batteries Do I Need for a 100 Watt Solar Panel?

The article discusses the use of 100-watt solar panels for portable power systems, particularly in off-grid settings like RVs. It emphasizes the importance of connecting these panels to the right ...





Battery For 100 Watt Solar Panel

In this article, we will explore everything you need to know about selecting the best battery for your 100-watt solar panel system, including types of batteries, sizing, and ...



[How Many Batteries Do I Need for a 100W Solar Panel?](#)

A 100W solar panel requires a 100ah 12V battery minimum. Solar panel output can range from 400-900 watts so the battery capacity must be at least 1000 watts. 100ah is equal to 1200 ...

[Battery Requirements for 100-Watt Solar Panel](#)

A single 100 Ah 12V battery typically suffices for a single 100-watt solar panel. Under ideal conditions, this basic setup provides adequate storage for the energy produced.



[How Many Batteries are Needed for a 100W, 500W ...](#)

One 100Ah 12V battery will power one 100-watt 12V solar panel. You may determine that you require a larger battery or two batteries for your solar setup after assessing your power requirements.



[What Size Battery Will a 100W Solar Panel Charge?](#)

A 70Ah battery can be charged with a 100-watt solar panel in as little as two hours. However, if you want to charge the battery faster, you can opt for a larger panel.



Contact Us

For catalog requests, pricing, or partnerships, please visit:
<https://www.conrad.edu.pl>