

What causes solar batteries to drain quickly





Overview

Factors that can cause solar batteries to drain too quickly include inefficient power habits, improper charging, high electrical load, or charge controller issues. Some common causes include inefficient energy conversion, poor battery maintenance, and fluctuating weather conditions.

Factors that can cause solar batteries to drain too quickly include inefficient power habits, improper charging, high electrical load, or charge controller issues. Some common causes include inefficient energy conversion, poor battery maintenance, and fluctuating weather conditions.

If your battery bank is draining rapidly, there might be an underlying problem in your solar panel system. This guide will show the most common reasons for rapid battery power loss and what to do about it. A solar battery will drain quickly if it isn't recharged for a long period or if the charge.

Solar batteries are a popular way of storing energy for later use, but one common issue that users face is that they discharge quickly. There are several reasons why this happens, and understanding them can help users make informed decisions about their energy storage needs. One reason why solar.

If a solar battery is not recharged for a significant period or if there is a malfunction in the charge controller, it will experience rapid drainage. Similarly, leaving a battery completely discharged without recharging it for extended periods of time will also result in quick drainage. Here are.

The rapid draining of solar batteries can happen due to several factors, ranging from improper maintenance and installation to environmental conditions and battery age. In this guide, I'll explain the details of why your solar battery drains so fast, and help you explore the underlying reasons.

If your solar battery is draining too quickly, it might be a result of improper charging habits, charge controller issues, or inefficient power usage. Solar batteries are designed to store excess electricity generated by your solar panels, so when they lose charge too fast, it can affect your.



Solar batteries draining fast is a common challenge faced by many users. There are several reasons why this may occur, including inefficient energy conversion, poor battery maintenance, and fluctuating weather conditions. Inefficient energy conversion occurs when the solar panels are not able to. Why is my solar battery draining fast?

If your battery bank is draining rapidly, there might be an underlying problem in your solar panel system. This guide will show the most common reasons for rapid battery power loss and what to do about it. A solar battery will drain quickly if it isn't recharged for a long period or if the charge controller is faulty.

Why is my solar panel drained at night?

However, if a battery is being drained by a solar panel during nighttime, it could be due to a lack of a diode or a malfunctioning diode in the panel. The absence or failure of a diode allows the current to reverse its path, resulting in battery drainage.

Can solar panels drain batteries at night?

Solar panels are not intended to drain batteries at night. Their primary function is to draw power from batteries and maintain their smooth operation. However, if a battery is being drained by a solar panel during nighttime, it could be due to a lack of a diode or a malfunctioning diode in the panel.

How do you fix a solar panel battery drain?

Install the diode in the terminal hole, making sure the gray bar or band side is oriented in the same direction as the positive cable gland. Carefully solder the intersection of the diode lead and terminal. Close the junction box cover and press the locking tab to seal it shut. What are Some Tips on Fixing Solar Panel Battery Drainage?

.

Should you charge or discharge a solar battery?

It's best not to fully charge or discharge a solar battery. For lead acid batteries, aim to recharge at around 50% capacity, while for lithium batteries, aim for 35%-40%. Avoid letting the battery charge drop too low as well. For example, if you recharge an AGM battery to 50% and then top it off at 75%, you're only utilizing 25% of its power.



Does a solar charge controller prevent battery drainage?

However, if you have a Solar Charge Controller, it will prevent battery drainage. Many people think that solar charge controllers or inverters are responsible for battery drainage, especially at night.



What causes solar batteries to drain quickly

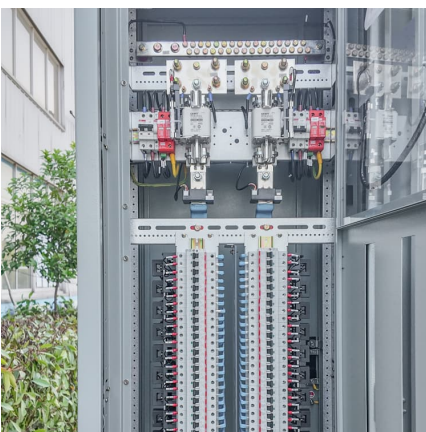


[Why Your Solar Battery May Be Draining Too Fast](#)

Fast-draining solar batteries can be caused by several factors, including improper charging, inefficient energy use, faulty charge controllers, or solar panel issues.

[Why Does My Solar Battery Drain So Fast?](#)

In this guide, I'll explain the details of why your solar battery drains so fast, and help you explore the underlying reasons behind this issue. By understanding these causes, ...



[Why My Solar Battery is Draining Fast: Reasons and ...](#)

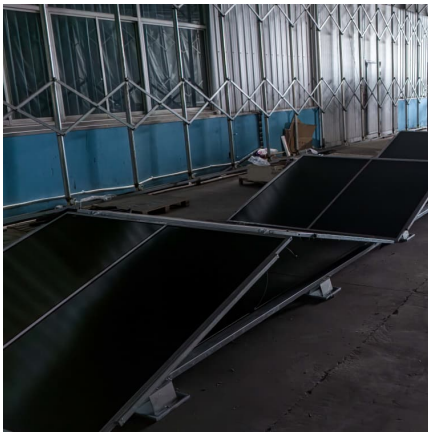
Let's explore the reasons behind solar panels draining batteries, identify faulty conditions that lead to this problem, and provide solutions to fix these conditions.

Why Solar Batteries Drain Quickly: What Causes Rapid Discharges

Solar batteries are a popular way of storing energy for later use, but one common issue that users face is that they discharge quickly. There



are several reasons why this happens, and ...

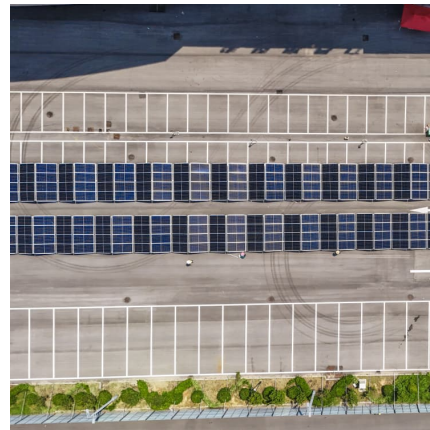


Why Your Solar Batteries Drain Fast And How To Prevent It

In this post, we'll shed some light on the culprits behind rapid battery drain and equip you with strategies to keep your batteries charged for longer. Let's explore the common causes of fast ...

Why is My Solar Battery Draining So Fast? Causes & Solutions

Discover the common reasons why your solar battery is draining quickly, including temperature impacts, charge controller issues, and more.



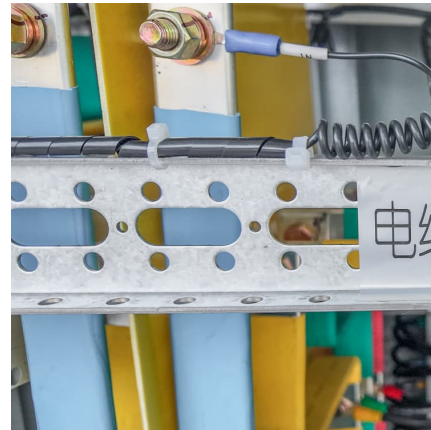
[Why Is My Solar Battery Draining So Fast?](#)

This article provides a comprehensive guide to understanding why solar batteries drain faster than expected. It discusses the common culprits behind rapid battery ...



[Why Is My Solar Battery Draining So Fast?](#)

There are several potential causes of a solar battery draining faster than expected, from inefficient energy use and faulty charge controllers to battery aging and external ...



Why My Solar Battery is Draining Fast: Reasons and Solutions

Let's explore the reasons behind solar panels draining batteries, identify faulty conditions that lead to this problem, and provide solutions to fix these conditions.

[Reasons of solar batteries draining fast + 7 solutions](#)

In conclusion, there are several potential reasons why your solar battery may be draining quickly, ranging from improper maintenance and insufficient power generation to excessive energy consumption and faulty ...



[Reasons of solar batteries draining fast + 7 solutions](#)

In conclusion, there are several potential reasons why your solar battery may be draining quickly, ranging from improper maintenance and insufficient power generation to ...



Contact Us

For catalog requests, pricing, or partnerships, please visit:
<https://www.conrad.edu.pl>