

What is the efficiency of the flywheel energy storage system





Overview

Compared with other ways to store electricity, FES systems have long lifetimes (lasting decades with little or no maintenance; full-cycle lifetimes quoted for flywheels range from in excess of 10 , up to 10 , cycles of use), high (100–130 W·h/kg, or 360–500 kJ/kg), and large maximum power output. The (ratio of energy out per energy in) of flywheels, also known as round-trip efficiency, can be as high as 90%. Typical capacities range from 3 to 13.

The efficiency of a flywheel energy storage system typically ranges from 1. 70% to 90%, 2. Involves energy loss due to friction and air resistance, 3. Offers rapid charge and discharge capabilities, 4. Provides long lifespan compared to chemical batteries.

The efficiency of a flywheel energy storage system typically ranges from 1. 70% to 90%, 2. Involves energy loss due to friction and air resistance, 3. Offers rapid charge and discharge capabilities, 4. Provides long lifespan compared to chemical batteries.

What is the efficiency of the flywheel energy storage system?

The efficiency of a flywheel energy storage system typically ranges from 1. 70% to 90%, 2. Involves energy loss due to friction and air resistance, 3. Offers rapid charge and discharge capabilities, 4. Provides long lifespan compared to.

Flywheel energy storage (FES) works by accelerating a rotor (flywheel) to a very high speed and maintaining the energy in the system as rotational energy. When energy is extracted from the system, the flywheel's rotational speed is reduced as a consequence of the principle of conservation of.

A flywheel energy storage system is a mechanical device used to store energy through rotational motion. When excess electricity is available, it is used to accelerate a flywheel to a very high speed. The energy is stored as kinetic energy and can be retrieved by slowing down the flywheel.

One such technology is flywheel energy storage systems (FESSs). Compared with other energy storage systems, FESSs offer numerous advantages, including a long lifespan, exceptional efficiency, high power density, and



minimal environmental impact. This article comprehensively reviews the key.

High efficiency: FES systems are capable of high-round-trip efficiencies, often above 85%. This means a larger proportion of input energy can be effectively stored and used. **Environmental friendliness:** Flywheels are made from materials that are easily recyclable and do not produce harmful waste.



What is the efficiency of the flywheel energy storage system



Flywheels , Climate Technology Centre & Network , Tue, 11/08/2016

The mechanics of energy storage in a flywheel system are common to both steel- and composite-rotor flywheels. In both systems, the momentum (the product of mass times velocity) of the ...

[What is a flywheel energy storage system?.. NenPower](#)

A flywheel energy storage system is a mechanical device that utilizes rotational energy to store and release electricity. 1. It operates on the ...



Flywheel Energy Storage Systems and their Applications: A ...

Solar systems have been the preferred backup system to use. However, the high cost of purchase and maintenance of solar batteries has been a major hindrance. Flywheel energy storage ...

[What is Flywheel Energy Storage - How Does it Work?](#)

Flywheel energy storage is a promising technology for replacing conventional lead acid batteries as energy storage systems. Most



modern high ...



Technology: Flywheel Energy Storage

Summary of the storage process Flywheel Energy Storage Systems (FESS) rely on a mechanical working principle: An electric motor is used to spin a rotor of high inertia up to 20,000-50,000 ...

Flywheel Energy Storage System

Flywheel Energy Storage Systems (FESS) are defined as systems that store energy by spinning a rotor at high speeds, converting the rotor's rotational energy into electricity. They utilize a high ...



[Flywheel Energy Storage: Alternative to Battery Storage](#)

The system's efficiency stems from minimizing frictional losses and air resistance, often by using magnetic bearings and placing the flywheel ...



Flywheel energy storage

Overview
Physical characteristics
Main components
Applications
Comparison to electric batteries
See also
Further reading
External links

Compared with other ways to store electricity, FES systems have long lifetimes (lasting decades with little or no maintenance; full-cycle lifetimes quoted for flywheels range from in excess of 10, up to 10, cycles of use), high specific energy (100-130 W·h/kg, or 360-500 kJ/kg), and large maximum power output. The energy efficiency (ratio of energy out per energy in) of flywheels, also known as round-trip efficiency, can be as high as 90%. Typical capacities range from 3 kWh to 13...

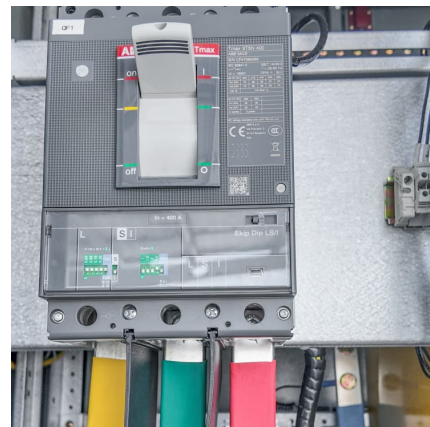


FLYWHEEL ENERGY STORAGE SYSTEMS: A KEY COMPONENT IN BUILDING ENERGY

Flywheel Energy Storage Systems (FESS) provide efficient, sustainable energy storage for grid-interactive buildings like hospitals, universities, and commercial properties. ...

[Dual-inertia flywheel energy storage system for](#)

This system provides storage with adaptive capacity, which enables more efficient contribution in different dynamic periods. The sizing of ...



A Comprehensive Review on Flywheel Energy Storage Systems: ...



Finding efficient and satisfactory energy storage systems (ESSs) is one of the main concerns in the industry. Flywheel energy storage system (FESS) is one of the most satisfactory energy ...

Flywheel Energy Storage System: What Is It and How ...

High Efficiency: Flywheel systems are highly efficient at storing and releasing energy, with minimal energy loss over time. Environmentally Friendly: Since ...

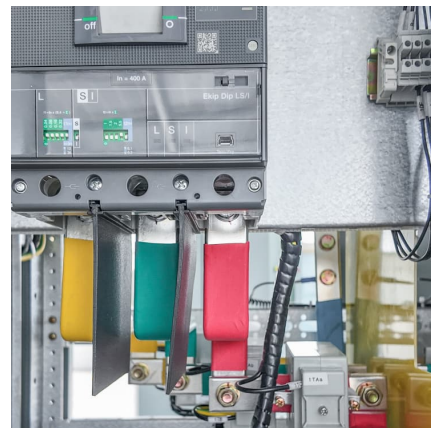


Flywheel Energy Storage Systems and their Applications: A ...

Flywheel energy storage systems are suitable and economical when frequent charge and discharge cycles are required. Furthermore, flywheel batteries have high power density and a ...

A review of flywheel energy storage systems: state of the art and

In this paper, state-of-the-art and future opportunities for flywheel energy storage systems are reviewed. The FESS technology is an interdisciplinary, complex subject that ...





[Flywheel Energy Storage for Automotive Applications](#)

Flywheel energy storage is reaching maturity, with 500 flywheel power buffer systems being deployed for London buses (resulting in fuel ...

[What is Superconducting Energy Storage Technology?](#)

Explore how superconducting magnetic energy storage (SMES) and superconducting flywheels work, their applications in grid stability, and why they could be key ...

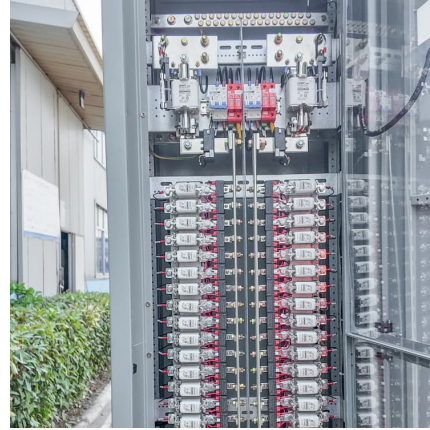


[Flywheel vs Battery Energy Storage Cost Analysis](#)

How do flywheel energy storage systems compare to other forms of energy storage (such as batteries) in terms of cost, efficiency, and reliability? calculation Considering ...

A Comprehensive Review on Flywheel Energy Storage Systems: ...

Flywheel energy storage system (FESS) is one of the most satisfactory energy storage which has lots of advantages such as high efficiency, long lifetime, scalability, high ...



[Flywheel Energy Storage Systems and Their ...](#)

The flywheel energy storage system (FESS) offers a fast dynamic response, high power and energy densities, high efficiency, good reliability, ...



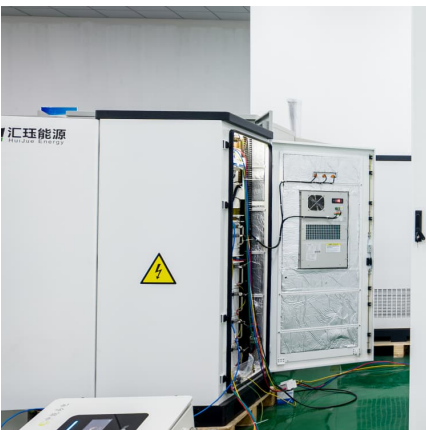
[Why NASA's Mechanical Battery Could Be the Future ...](#)

NASA's flywheel-based mechanical battery system showcased a sustainable and efficient alternative to chemical batteries, using gyroscopic ...



Enhancing vehicular performance with flywheel energy storage systems

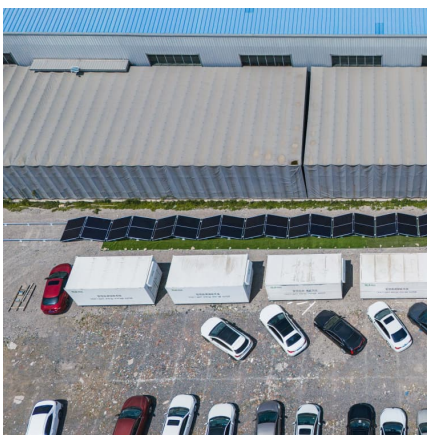
Flywheel Energy Storage Systems (FESS) are a pivotal innovation in vehicular technology, offering significant advancements in enhancing performance in vehicular ...





What is the energy storage efficiency of a flywheel?

1. Energy storage efficiency of a flywheel is notably high, ranging from 80% to 95% based on design and operational parameters. 2. Flywheels ...



Flywheel Energy Storage

Flywheel energy storage is a versatile and efficient technology that plays a crucial role in modern energy systems. Its ability to rapidly store and release energy ...

A Review of Flywheel Energy Storage System Technologies

One such technology is flywheel energy storage systems (FESSs). Compared with other energy storage systems, FESSs offer numerous advantages, including a long ...



Contact Us

For catalog requests, pricing, or partnerships, please visit:
<https://www.conrad.edu.pl>