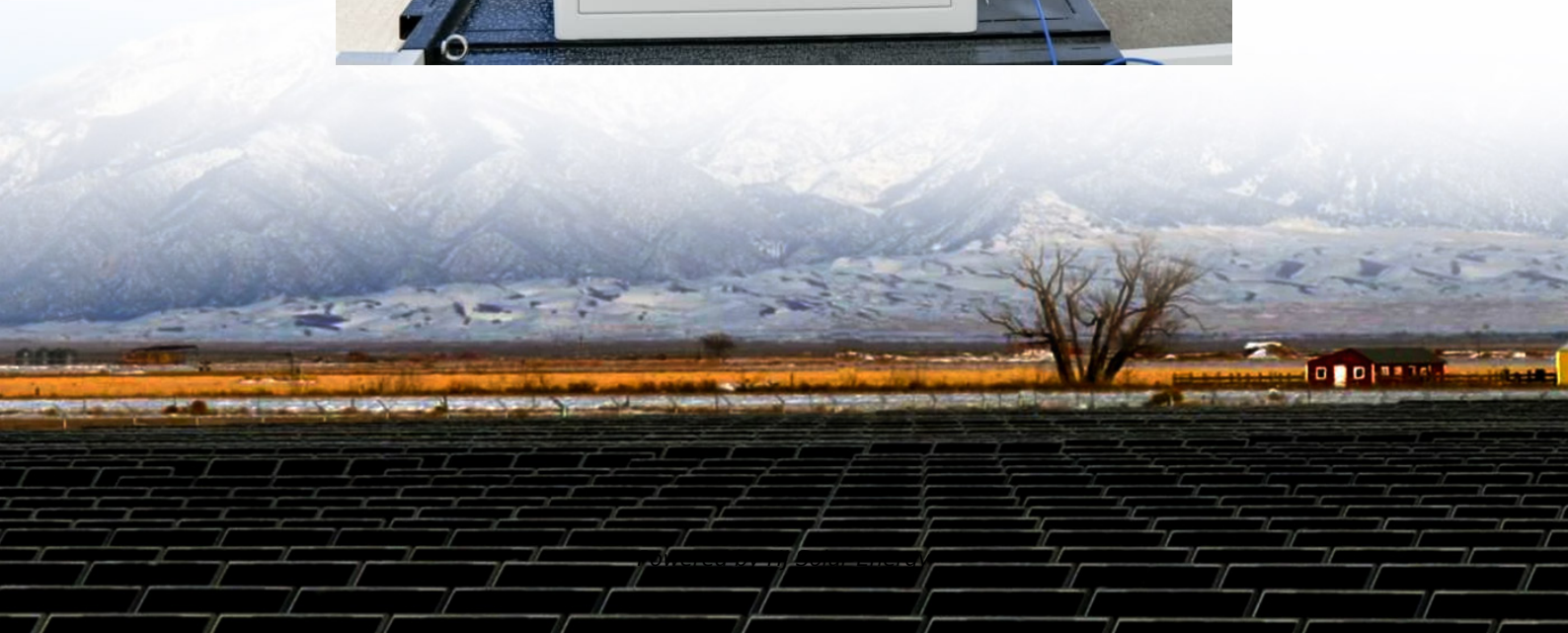


What is the rectifier module of the energy storage cabinet





Overview

The rectifier cabinet is composed of DC power module, intelligent monitoring module, load distribution module, cooling system, etc. The DC power module is the core part of the rectifier cabinet. It converts the input AC power into a stable DC power supply for use by the equipment.

The rectifier cabinet is composed of DC power module, intelligent monitoring module, load distribution module, cooling system, etc. The DC power module is the core part of the rectifier cabinet. It converts the input AC power into a stable DC power supply for use by the equipment.

With BENNING ENERGY STORAGE Solutions, we offer modular systems tailored to your specific needs – from high-performance storage for e-mobility applications to hybrid UPS energy systems with integrated energy management. You get more than just standalone components like inverters or UPS systems. We.

What is the energy storage module energy storage cabinet Energy storage cabinets, 1. serve as essential custodians of accumulated energy, 2. facilitate the seamless integration of renewable sources, 3. enhance reliability during peak demands, and 4. optimize energy consumption for various.

ATESS energy storage systems are designed for a wide range of applications, suitable for small commercial use from 5kW to 50kW, as well as commercial and industrial use ranging from 30kW to MW scale. Our product offerings include hybrid inverters, battery inverters, battery solutions, solar charge.

A rectifier module changes alternating current (AC) into direct current (DC). It gives steady power to devices that need DC systems. These modules are used in industries needing stable energy. They control voltage and stop problems from changing AC power. New rectifier modules save energy, working.

The rectifier cabinet is composed of DC power module, intelligent monitoring module, load distribution module, cooling system, etc. The DC power module is the core part of the rectifier cabinet. It converts the input AC power into a stable DC power supply for use by the equipment. The intelligent.



It converts alternating current (AC) into direct current (DC)—the language most energy storage systems (like batteries) understand. Without this bridge, your solar panels would be shouting Italian opera lyrics at a battery that only understands Shakespearean sonnets. Tesla's Powerwall: Uses. What is a rectifier module?

A rectifier module has parts that work together to change AC to DC. The diode is the most important part. Diodes let electricity flow in one direction only. Advanced rectifiers may use special devices like SCRs for better control. Transformers are also key parts.

Why are modular rectifiers important?

Modular rectifiers are easy to upgrade and lower maintenance costs. Rectifier modules are crucial for changing AC power into DC power. They help devices get steady electricity to work properly. You've seen how they work and the types like half-wave, full-wave, and bridge rectifiers. These modules are very important in power systems.

How does a rectifier work?

Gadgets like phones, laptops, and TVs depend on rectifiers. These convert AC from outlets into usable DC power. When you plug in a device, the rectifier changes AC to DC. This DC power is needed for sensitive parts inside. For example, your phone charger has a rectifier. It helps charge your battery safely and efficiently.

Can a modular rectifier cabinet be combined with ATS PCs?

Modular rectifier cabinet with ATS, two-in-one design, can be combined with ATESS PCS to form a DC coupling solution suitable for large industrial scenarios. Modular rectifier cabinet, 300KW and 600KW optional, can be combined with ATESS PCS to form a DC coupling solution, suitable for large industrial scenarios.

How does rectification work?

Rectification changes AC power into DC power. This is important because devices like phones need steady DC power. Rectifiers do this by letting electricity flow in one direction only. They block electricity from going backward. There are two main types of rectification: half-wave and full-wave.

How much is the rectifier market worth in 2024?



The rectifier market is growing fast. It might go from \$6.92 billion in 2024 to \$9.75 billion by 2032. Many industries, like cars, green energy, and telecom, need them more and more. Rectifier modules change AC power into DC power. This gives steady electricity for many devices and systems.



What is the rectifier module of the energy storage cabinet

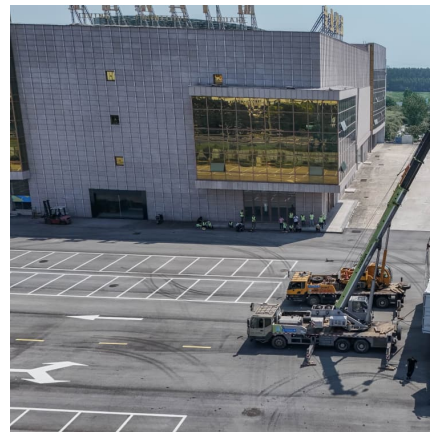


Rectifier solution

With ATESS's Rectifier solution, enjoy smooth energy efficiency. With its solid performance and universal compatibility, it's the key to unlocking sustainable energy management.

ENETEK POWER

Enetek; Safer, Reliable Power for critical processes with enetek, businesses can confidently navigate the complexities of power management, knowing that their critical processes are ...



[CATL 90KW/266KWH All-in-one Outdoor Cabinet BESS](#)

90KW/266KWH All-in-one Fully integrated Outdoor Cabinet BESS produced by catl Individual pricing for large scale projects and wholesale demands is available. Mobile/WhatsApp/Wechat: ...



[Battery Storage Cabinets , Slimline & Rack](#)

PowerPlus Energy offers a range of battery storage cabinets, including slimline and rack options. Keep your energy storage organized and secure with our ...



The Future of Energy Storage: Battery Energy Storage Systems

Battery Energy Storage Systems: Explore the benefits of battery energy storage systems for dynamic power, grid support, and online UPS mode integration.



What ESTEL Delta Rectifier Modules Are and How They Power ...

Delta rectifier modules convert AC to DC power, ensuring stable energy for telecom systems. Their modular design and efficiency enhance reliability and scalability.



What Makes ESTEL Telecom Rectifier Cabinets Essential for ...

ESTEL telecom rectifier cabinets ensure reliable DC power, energy efficiency, and scalability, making them vital for 5G, data centers, and rural connectivity.





Balancing cost and reliability in rectifier module selection with N+1

Compare N+1 and N+2 rectifier module configurations to balance cost, reliability, and uptime for critical power systems in commercial and industrial settings.



[Huawei Rectifier Cabinet Introduction , PDF , Power ...](#)

Huawei Rectifier Cabinet Introduction - Free download as PDF File (.pdf), Text File (.txt) or view presentation slides online. This document provides ...

Hybrid Energy

Product Rating The Cat® ETS150 cabinet house contains the renewable energy controller, converters and storage system with a number of batteries and support equipment. The ETS ...



[Lithium Battery Storage Cabinet , Rack Cabinets](#)

PowerPlus Energy provides high-quality rack cabinets for lithium battery storage. Streamline and secure your energy system with our efficient and reliable ...



[DC power supply cabinet working principle and role ...](#)

The AC power distribution part is mainly composed of AC power distribution unit. The rectifier part is composed of charging module and ...



Photovoltaic Energy Storage System Cabinet: Your Ultimate ...

You're a homeowner tired of skyrocketing electricity bills, or maybe a facility manager trying to hit sustainability targets. Enter the photovoltaic energy storage system ...

48Vdc Cordex® 650W Shelf System

The Cordex® 650W rectifier is available in a choice of 19" or 23" shelf configurations. Either power system option comes complete with distribution, controller, and rectifier slots. With a maximum ...





[Solar Controller Integration with AC Rectifiers](#)

Grid Rectifier with Solar PV Backup Systems
Telecommunications equipment is expected to operate without any interruptions. These systems incorporate energy storage and backup ...

Energy Infrastructure & Industrial Solutions Energy Storage ...

Energy Management Energy storage systems (ESSs) can control energy to enhance the reliability and energy through four critical technologies: energy management, power conditioning,



[What is a Rectifier Module and How Does It Work](#)

Rectifier modules convert AC to DC, providing stable power for devices. They are essential in telecom, industrial systems, and renewable energy setups.

Contact Us

For catalog requests, pricing, or partnerships, please visit:
<https://www.conrad.edu.pl>