

# **What should i do if the new automatic equipment cannot store energy outdoors**





## Overview

---

Generators are machines that convert mechanical energy into electrical energy. They can provide power when there is no access to a regular electrical power source or when the regular power source is unavailable, such as during power outages, camping trips, or.

We typically use generators for providing temporary or portable power, but storing them outside can pose certain risks and challenges. Here are a few things to consider when storing a.

When storing a portable generator, it is important to choose a location that is safe and dry to prevent damage to the generator and it is ready for use when needed. Here are some.

If you don't use your generator for an extended period, you have take certain steps so that it remains in good condition and is ready to use when you need it. Here are some tips for.

Storing a generator properly when it's not in use is important to ensure that it remains in good condition and is ready to use when needed. Here.

Learn the essential tips on how to store your generator outdoors effectively. Protect your investment with our comprehensive guide for all weather conditions.

Learn the essential tips on how to store your generator outdoors effectively. Protect your investment with our comprehensive guide for all weather conditions.

Here are some tips for what to do if you don't use your generator: To prevent rust and other damage, store your generator in a dry, covered location, such as a shed or garage. Make sure the location is well-ventilated to prevent the buildup of fumes. If you won't be using your generator for more.

While maintenance for battery-powered equipment is less involved than that for their gasoline counterparts, there are still some steps you should follow to make sure your gear is ready now that peak mowing season is upon us. I spoke with experts from some of the top brands of electric outdoor.



Whatever your story, new outdoor power storage gadgets are changing the game – and you don't want to miss this train. What's in It for You?

Power for mini-fridges that keep beers cold (priorities, right?)

) Remember when portable power meant lugging car batteries around?

Yeah, neither do we. Here's.

Explore battery storage, pumped hydro storage, compressed air energy storage, thermal energy storage, hydrogen storage, and more. Discover the working principles, advantages, and challenges of each storage technology. Dive into the exciting world of energy storage innovation in this informational.

Whether you decide to connect your home renewable energy system to the electric grid or not, you will need to invest in some additional equipment (called "balance-of-system") to condition the electricity, safely transmit the electricity to the load that will use it, and/or store the electricity for.

Essential steps to safely store a portable generator outside, including choosing the right location, investing in a quality generator cover, ensuring proper ventilation, and conducting regular maintenance, can prolong the life of your generator. Whether you're preparing for an upcoming storm season. Do I need a balance-of-system equipment for a stand-alone system?

If you want to store power for use when your renewable energy system isn't producing electricity, you will need to purchase batteries and a charge controller, which are considered balance-of-system equipment. The cost of this equipment for a stand-alone system could account for half of your total system costs.

What equipment do I need for a stand-alone system?

For a stand-alone renewable energy system, typical balance-of-system equipment includes batteries, charge controller, power conditioning equipment, safety equipment, and meters and instrumentation. Your system supplier will be able to tell you exactly what equipment you will need for your situation.

How much equipment do I need for a stand-alone electric system?

For stand-alone systems, which are not connected to the electric grid, the amount of equipment you will need to buy depends on what you want your



system to do. In the simplest systems, the current generated by your system is connected directly to the equipment that it is powering (load).

Should you bring battery-powered yard equipment indoors?

Instead, consider bringing them indoors or to a cool, dry area like a heated garage or well-ventilated shed. Removing the batteries from the tool and charger is also best to avoid damage or overcharging. Battery-powered yard equipment has become powerful enough to be many people's only yard equipment.

Is power conditioning equipment required?

For both stand-alone and grid-connected renewable energy systems, you will need power conditioning equipment since most electrical appliances and equipment in the United States run on alternating current (AC) electricity. Virtually all the available renewable energy technologies, with the exception of some solar electric units, produce direct current (DC) electricity.

What equipment does a grid-connected system need?

A grid-connected renewable energy system -- one that is connected to the electric grid -- requires balance-of-system equipment to safely transmit electricity to your loads and to comply with your power provider's grid-connection requirements. You will need power conditioning equipment, safety equipment, and meters and instrumentation.



## What should i do if the new automatic equipment cannot store ener

---



### Lockout/Tagout

General Requirements The regulation requires that procedures be developed, documented, and utilized for the control of potentially hazardous energy when employees service and maintain ...

### [OSHA Quiz \( 13 \) Lockout/Tagout Flashcards . Quizlet](#)

Study with Quizlet and memorize flashcards containing terms like If an energy isolating device is capable of being locked out, the employer's energy control ...



### [\(18\) Lockout/Tagout Procedures Flashcards . Quizlet](#)

Study with Quizlet and memorize flashcards containing terms like Recognize hazardous energy sources, understand their risks, and perform energy-control procedures., Are designed to be ...



### What should I do if the new automatic equipment cannot store ...

If you want to store power for use when your renewable energy system isn't producing electricity, you will need to purchase batteries



and a charge controller, which are considered balance-of ...



[Can an Air Compressor Be Stored Outside? Read Our ...](#)

Can an Air Compressor Be Stored Outside? before you head outdoors to find a new home for your air compressor, here is what you should know.

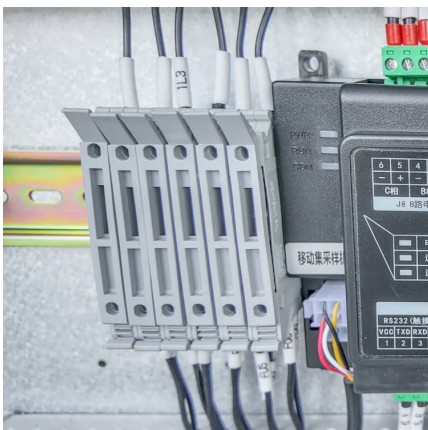
[Academy Sports + Outdoors , Quality Sporting Goods ...](#)

Shop Academy Sports + Outdoors for sporting goods, hunting, fishing and camping equipment. Find recreation and leisure products, footwear, apparel, ...



[Control of Hazardous Energy \(Lockout/Tagout\)](#)

What is hazardous energy? Energy sources including electrical, mechanical, hydraulic, pneumatic, chemical, thermal, or other sources in machines and equipment can be hazardous ...



[Balance-of-System Equipment Required for ...](#)

However, if you want to store power for use when your system isn't producing electricity, you will need to purchase batteries and a charge controller. ...



[Energy Control Procedure \(Lockout-Tagout\)](#)

ENERGY CONTROL (LOCKOUT-TAGOUT) Purpose  
The purpose of this procedure is to establish safeguards for the protection of employees and others, to prevent the unexpected, ...



**If You Aren't Following These Expert Steps to Store Your**

I spoke with experts from some of the top brands of electric outdoor equipment to learn the best tips for properly storing battery-powered outdoor equipment in the winter.



[Exceptions to LOTO - Safety and Health Safety Shares](#)

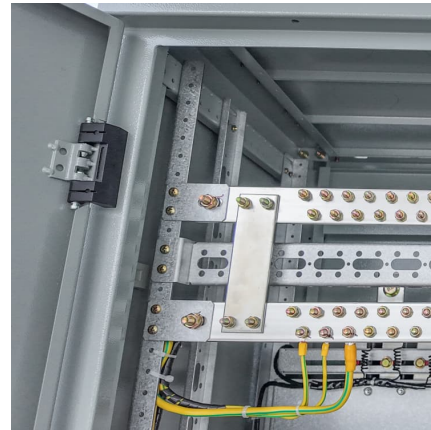
LOTO procedures do not have to be implemented when servicing or maintaining cord-and-plug connected electrical equipment IF complete de ...





### [What are the Safety Precautions for Stored Energy?](#)

Learn essential safety precautions for stored energy to prevent accidents and ensure a safe environment. This guide covers key tips and best practices for handling and ...



### [Preventing an automatic restart with safe start devices](#)

Preventing an automatic restart with safe start devices. You can promote workplace safety by using safe start devices that are compliant with OSHA's safety standards designed to prevent ...

### [What Is Energy Storage & How Does It Work?](#)

Interested in energy storage? Learn what energy storage is, why it's important, how it works and how energy storage systems may be used to lower energy ...



### [REI: A Life Outdoors is a Life Well Lived , REI Co-op](#)

Top-brand gear, clothing--and outdoor adventures! Plus rentals, classes, events, expert advice and more. Visit REI Co-op online and in-store.



### Should Solar Batteries Be Inside or Outside: Choosing the Best ...

Frequently Asked Questions What are solar batteries and what do they do? Solar batteries store energy generated by solar panels for use when sunlight is unavailable. They ...

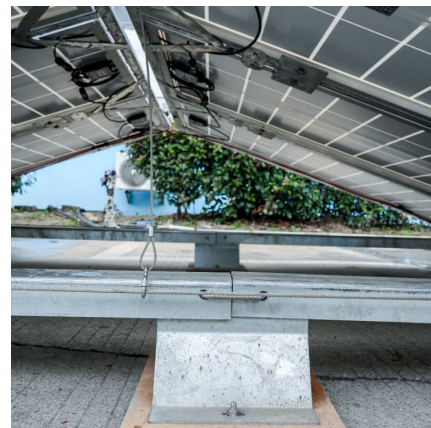


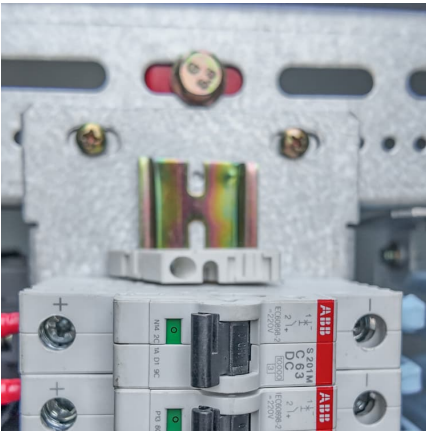
### Follow These Expert Tips to Store Your Electric Yard ...

I spoke with experts from some of the top brands of electric outdoor equipment to learn the best tips for properly storing battery-powered ...

### How to Store a Lawn Mower Outside Without a Shed: Effective ...

Learn how to safely store your lawn mower outdoors without a shed while protecting it from the elements. This article explores the best locations for outdoor storage, the ...





### What Is Energy Storage & How Does It Work? , Constellation

Interested in energy storage? Learn what energy storage is, why it's important, how it works and how energy storage systems may be used to lower energy costs.

### Lockout/Tagout: Control of Hazardous Energy Lockout-Tagout

"Lockout/tagout" refers to specific practices and procedures to safeguard employees from the unexpected energization or startup of machinery and equipment, or the release of hazardous ...



### [Safety Training: Lockout Tagout Flashcards , Quizlet](#)

Study with Quizlet and memorize flashcards containing terms like Which of the following secures a machine's energy isolating devices in a position that prevents accidental startup?, Which ...



### Quora

Quora is a place to gain and share knowledge. It's a platform to ask questions and connect with people who contribute unique insights and quality answers. This empowers people to learn ...



### [Tool box talk for LOTO & stored energy](#)

Stored energy (also residual or potential energy) is energy that resides or remains in the power supply system. When stored energy is released in an uncontrolled manner, individuals may be ...



### [Energy Isolation Device Requirements Occupational ...](#)

As a reminder, according to 29 CFR § 1910.147 (c) (2) (iii), after January 2, 1990, whenever replacement or major repair, renovation or ...



### **LOTO Safety Procedures: 6 Steps for Effective Lockout Tagout**

Lockout/Tagout is Part of an Energy Control Program Every workplace should have an energy control program in place, with LOTO safety being one part of that program. An ...





## Contact Us

---

For catalog requests, pricing, or partnerships, please visit:  
<https://www.conrad.edu.pl>