

What size cable from solar controller to battery





Overview

The cable connecting the charge controller and battery can be the same size as the one on the solar array. The further the controller is from the battery, the thicker the cable needs to be. Solar cable wire sizes are based on standard AWG, so you should.

The cable connecting the charge controller and battery can be the same size as the one on the solar array. The further the controller is from the battery, the thicker the cable needs to be. Solar cable wire sizes are based on standard AWG, so you should.

The wires connecting the charge controller to the battery have to be the right size to get the best results. The cables transmit current from the different parts of the PV system, so you need to use the optimum wire gauges. The cable connecting the charge controller and battery can be the same size.

Below you'll find a calculator that will help you find the right cable size to connect your solar charge controller to your battery, along with a couple of examples that will make this more comprehensive. What size cable from solar charge controller to battery?

The size of the cable that you need.

The correct cable size from your solar charge controller to your battery depends on the current (amps), voltage, distance, and acceptable voltage drop—typically 4 AWG to 10 AWG is used. Choosing the right cable size is not just a technical detail—it's critical for safety, performance, and.

The wire size from a solar charge controller to a battery depends on the current, or amperage, and the distance between the two components. However, commonly used wire sizes for such setups range from 8 AWG to 10 AWG. You may find the exact wire size you need by using a wire gauge calculator and.

When setting up a solar energy system, it's essential to understand the importance of properly sizing the wires that connect the solar charge



controller to the battery bank. In this guide, we will explore the significance of wire size, its impact on system performance, and provide you with.

The wires will range from the solar panels to the charge controller, busbar, and inverter. To start with, we can divide the calculations into two parts. These are: The wires from the solar panels to the charge controller will be lengthy. That's why we need to use a different calculation based on. What size cable do I need for a solar charge controller?

The cable connecting the charge controller and battery can be the same size as the one on the solar array. The further the controller is from the battery, the thicker the cable needs to be. Solar cable wire sizes are based on standard AWG, so you should have no problem finding one.

How to choose a solar charge controller & battery?

The cables transmit current from the different parts of the PV system, so you need to use the optimum wire gauges. The cable connecting the charge controller and battery can be the same size as the one on the solar array. The further the controller is from the battery, the thicker the cable needs to be.

How important is wire sizing for a solar charge controller?

Importance of Proper Wire Sizing When it comes to charge controller to battery wire sizing, one size does not fit all. The wire size directly affects the performance and safety of your solar energy system. Insufficient wire gauge can lead to voltage drop, overheating, and even fire hazards.

What is a solar charge controller to battery cable?

The purpose of this cable is to transfer the energy harnessed by the solar panels—from the solar charge controller—to the batteries for storage. The charge controller to battery cable plays an integral role in transferring power, helping to regulate the system's voltage and stop (or redirect) the flow of current to prevent overcharging.

How to connect a charge controller to a battery?

The wires connecting the charge controller to the battery have to be the right size to get the best results. The cables transmit current from the different parts of the PV system, so you need to use the optimum wire gauges. The cable connecting the charge controller and battery can be the same size as the one on the solar array.

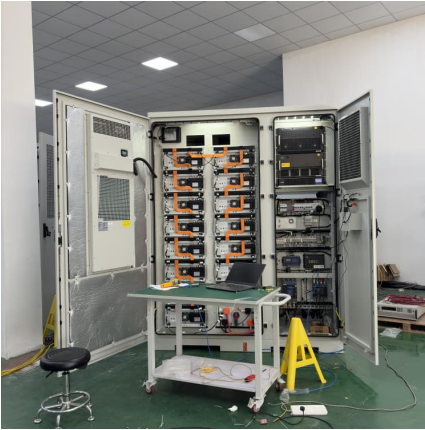


How to connect a solar controller to a battery?

Select the correct wire size and prepare it by cutting it to the appropriate length and stripping the ends. Connect one end of the cable to the respective terminal on your solar controller. Attach the other end to the corresponding terminal on the battery. Switch the charge controller back on and monitor the voltage.



What size cable from solar controller to battery



What size cable from solar charge controller to battery?

Below you'll find a calculator that will help you find the right cable size to connect your solar charge controller to your battery, along with a couple of examples that will ...

What size cable from solar charge controller to battery?

Below you'll find a calculator that will help you find the right cable size to connect your solar charge controller to your battery, along with a couple of examples that will make this more comprehensive.



[Charge Controller to Battery Wire Size Guide - ECGSOLAX](#)

Maximize your solar system's efficiency! Get the guide to wire sizing for charge controller to battery connection. Embrace renewable energy today!



[How to Calculate Wire Size for Solar System](#)

In this article, I will show you how you can calculate the wire size of a solar power system. From the solar panels to the battery. These will be easy.



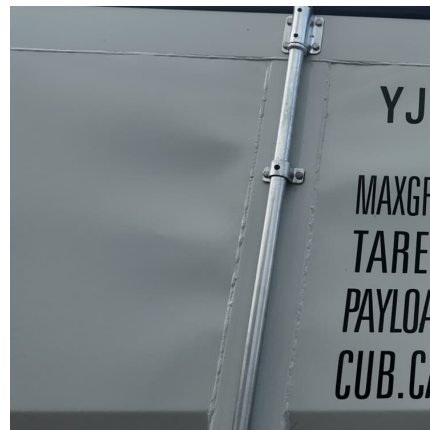
Wire size after the charge controller , DIY Solar Power Forum

The cable size from the charge controller to the battery should be whatever wire meets or exceeds the output amp rating of the charge controller. Regardless of whether ...



What Size Wire from Solar Charge Controller to Battery: Your

The right charge controller to battery wire size is crucial for an efficient solar system. This guide aims to equip you with a thorough understanding and practical skills to ...



[Charge Controller to Battery Wire Size Guide - ...](#)

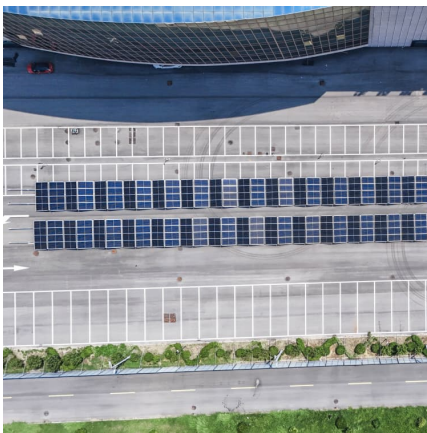
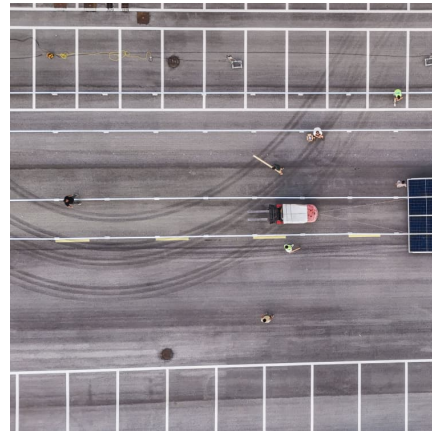
Maximize your solar system's efficiency! Get the guide to wire sizing for charge controller to battery connection. Embrace renewable energy today!





What Size Cable Do I Need from Solar Controller to Battery?

The correct cable size from your solar charge controller to your battery depends on the current (amps), voltage, distance, and acceptable voltage drop--typically 4 AWG to 10 ...



[Charge Controller to Battery Wire Size Guide](#)

The cable connecting the charge controller and battery can be the same size as the one on the solar array. The further the controller is from the battery, the thicker the cable needs to be.

What Size Wire from Solar Charge Controller to Battery? The ...

Choosing the correct wire size from solar charge controller to battery isn't just about compliance - it's about safety, efficiency, and getting the most juice from your solar ...



[What Size Wire from Solar Charge Controller to ...](#)

The right charge controller to battery wire size is crucial for an efficient solar system. This guide aims to equip you with a thorough understanding and practical skills to calculate the appropriate wire size for your ...



What Size Wire from Solar Charge Controller to Battery: Get to ...

Whether you're planning to power a small off-grid cabin or make your home more energy-efficient, one crucial piece of the puzzle is understanding what size wire to use from ...



[What Size Wire From Solar Charge Controller To Battery](#)

The size of the cable needed to connect a solar charge controller (MPPT or PWM) to a battery bank depends on three factors: the output current rating, distance, and wire ...



Contact Us

For catalog requests, pricing, or partnerships, please visit:
<https://www.conrad.edu.pl>