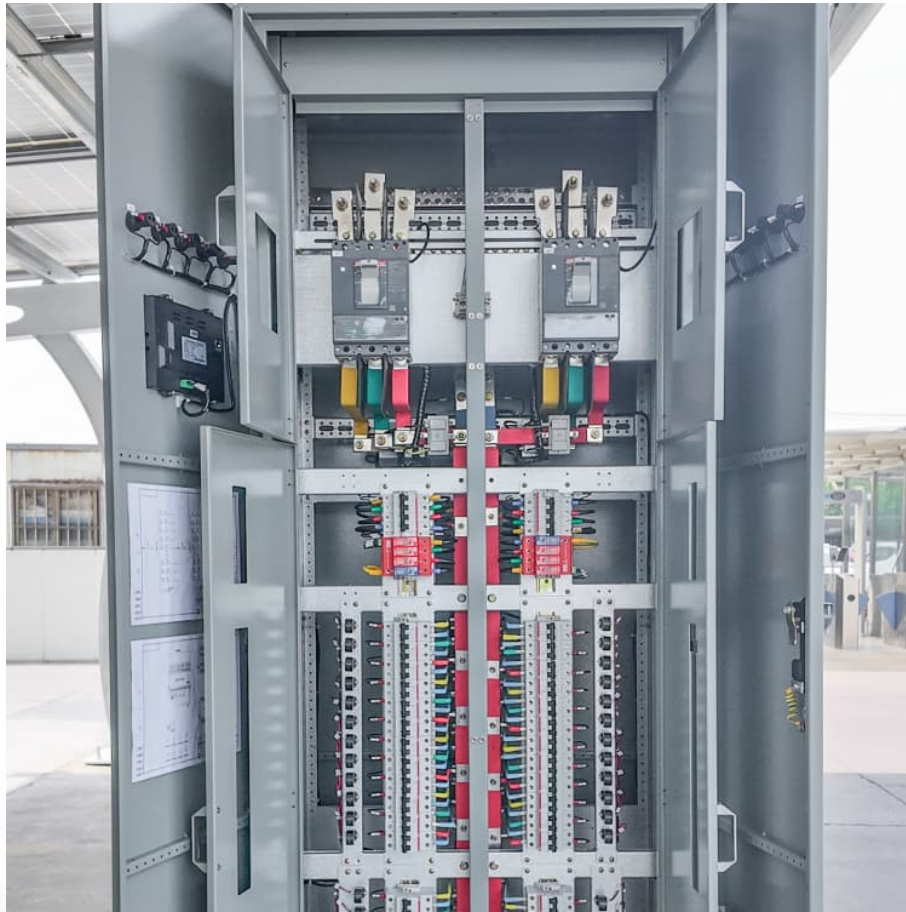


Why does my solar battery discharge overnight





Overview

A good solar panel won't drain your battery; even during nighttime. If it happens the main reason is that its blocking or bypass diodes are broken and need replacement. Even then if you have a Solar Charge Controller it'll prevent battery drainage.

A good solar panel won't drain your battery; even during nighttime. If it happens the main reason is that its blocking or bypass diodes are broken and need replacement. Even then if you have a Solar Charge Controller it'll prevent battery drainage.

After sun down with hardly any load the battery (ive disconnected the inverter to rule that out) voltage tails off and last night went down to 12.11v (50% soc?

) this is with no load bar the SCC being connected to the batteries. Ive got an ammeter / shunt in place which shows the SCC draws around.

In fact, you might even find your solar panels drain your batteries at night when there is no sun to produce electricity. But don't worry, it doesn't have to keep happening and it should be a simple fix to remove the problem. There are several common reasons why a solar panel drains a battery.

A good solar panel won't drain your battery; even during nighttime. If it happens the main reason is that its blocking or bypass diodes are broken and need replacement. Even then if you have a Solar Charge Controller it'll prevent battery drainage. Usually, most people's solar panels drain during.

A solar battery stores the energy harnessed from your solar panels for later use. Think of it as a bank where you deposit the electricity produced during the day and withdraw it when needed, typically at night or during cloudy periods. Capacity refers to the amount of energy a battery can store.

If your battery bank is draining rapidly, there might be an underlying problem in your solar panel system. This guide will show the most common reasons for rapid battery power loss and what to do about it. A solar battery will drain quickly if it isn't recharged for a long period or if the charge.



If a solar battery is not recharged for a significant period or if there is a malfunction in the charge controller, it will experience rapid drainage. Similarly, leaving a battery completely discharged without recharging it for extended periods of time will also result in quick drainage. Here are. Why is my solar battery draining fast?

If your battery bank is draining rapidly, there might be an underlying problem in your solar panel system. This guide will show the most common reasons for rapid battery power loss and what to do about it. A solar battery will drain quickly if it isn't recharged for a long period or if the charge controller is faulty.

Why does my solar battery discharge to the grid?

Solar battery discharge to the grid occurs for several reasons. Knowing these reasons helps you manage your solar system effectively. Your solar battery might not store enough energy if its capacity is too low. This limitation leads to energy overflow, resulting in discharge to the grid.

Why is my solar panel drained at night?

However, if a battery is being drained by a solar panel during nighttime, it could be due to a lack of a diode or a malfunctioning diode in the panel. The absence or failure of a diode allows the current to reverse its path, resulting in battery drainage.

Do solar panels discharge at night?

The answer is yes. Solar panels will discharge at night if your solar panel doesn't have a diode or it is broken. In fact not only does it happen at night, but it also happens when the panel doesn't get sunlight. Why you may ask. Well at night your Panel Voltage becomes 0.

Why does my solar panel feed on my battery instead of charging?

For example, your panel deciding to feed on your battery instead of charging it. So why does this happen and what is the fix?

A good solar panel won't drain your battery; even during nighttime. If it happens the main reason is that its blocking or bypass diodes are broken and need replacement.

Can a solar panel drain a battery at night?



A good solar panel won't drain your battery; even during nighttime. If it happens the main reason is that its blocking or bypass diodes are broken and need replacement. Even then if you have a Solar Charge Controller it'll prevent battery drainage. Usually, most people's solar panels drain during the night.



Why does my solar battery discharge overnight



[5 Reasons Your Solar Panel is Draining Your Battery ...](#)

But don't worry, it doesn't have to keep happening and it should be a simple fix to remove the problem. There are several common reasons why a solar panel drains a battery. Let's go through the issues and how to easily solve the problem.

Why Does My Solar Battery Discharge to the Grid and How to ...

Discover why your solar battery may be discharging to the grid instead of storing energy. This article delves into common causes, such as insufficient capacity and ...



[Why does my solar battery drain at night?](#)

Solar batteries discharge at night because photovoltaic panels stop generating electricity in darkness. Energy draw continues for essential loads like lighting and refrigeration, ...

Why My Solar Battery is Draining Fast: Reasons and Solutions

In this article, we will explore the possible reasons why your solar battery is draining fast and offer practical solutions to fix it. Why My



Solar Battery is Draining Fast?



[Why Solar Battery Drains Fast and How to Avoid It](#)

If your battery bank is draining rapidly, there might be an underlying problem in your solar panel system. This guide will show the most common reasons for rapid battery power loss and what ...

Why is My Solar Battery Draining So Fast? Causes & Solutions

Discover the common reasons why your solar battery is draining quickly, including temperature impacts, charge controller issues, and more.



5 Reasons Your Solar Panel is Draining Your Battery (& How to ...

But don't worry, it doesn't have to keep happening and it should be a simple fix to remove the problem. There are several common reasons why a solar panel drains a battery. Let's go ...



[Why Does My Solar Battery Discharge Overnight?](#)

Common causes of solar battery discharge include insufficient solar input, high energy consumption, inefficient solar panels, the age and condition of the battery, and ...



[Why My Solar Battery is Draining Fast: Reasons and ...](#)

In this article, we will explore the possible reasons why your solar battery is draining fast and offer practical solutions to fix it. Why My Solar Battery is Draining Fast?

Why Does Your Solar Battery Drain Overnight? (And How to Stop It)

If you've ever wondered, "Why does my solar battery drain overnight?", you're not alone. This issue plagues 23% of off-grid solar users according to a 2023 NREL study.



Weird overnight battery discharging , DIY Solar Power Forum

It's strange that the battery capacity and charging current do not mix well. If the bank capacity is at 100% the battery charging current should be very small, right?



Contact Us

For catalog requests, pricing, or partnerships, please visit:
<https://www.conrad.edu.pl>