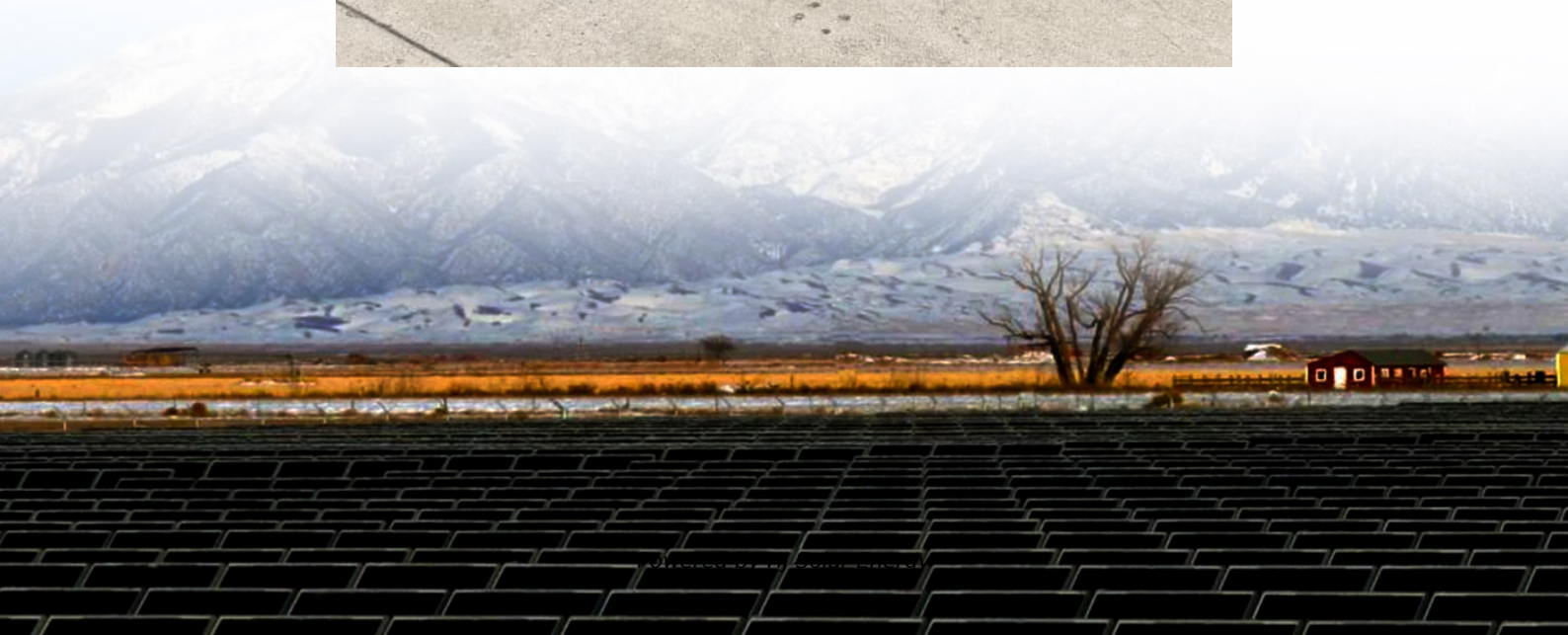


# **Wind power generation and energy storage power station**





## Overview

---

What is co-locating energy storage with a wind power plant?

Co-locating energy storage with a wind power plant allows the uncertain, time-varying electric power output from wind turbines to be smoothed out, enabling reliable, dispatchable energy for local loads to the local microgrid or the larger grid.

What is a wind storage system?

A storage system, such as a Li-ion battery, can help maintain balance of variable wind power output within system constraints, delivering firm power that is easy to integrate with other generators or the grid. The size and use of storage depend on the intended application and the configuration of the wind devices.

Can energy storage control wind power & energy storage?

As of recently, there is not much research done on how to configure energy storage capacity and control wind power and energy storage to help with frequency regulation. Energy storage, like wind turbines, has the potential to regulate system frequency via extra differential droop control.

Can energy storage improve wind power integration?

Overall, the deployment of energy storage systems represents a promising solution to enhance wind power integration in modern power systems and drive the transition towards a more sustainable and resilient energy landscape. 4. Regulations and incentives This century's top concern now is global warming.

Why do wind turbines need an energy storage system?

To address these issues, an energy storage system is employed to ensure that wind turbines can sustain power fast and for a longer duration, as well as to achieve the droop and inertial characteristics of synchronous generators



(SGs).

What is energy storage system generating-side contribution?

The energy storage system generating-side contribution is to enhance the wind plant's grid-friendly order to transport wind power in ways that can be operated such as traditional power stations. It must also be operated to make the best use of the restricted transmission rate. 3.2.2. ESS to assist system frequency regulation



## Wind power generation and energy storage power station

---



### Solar, battery storage to lead new U.S. generating capacity ...

We expect 63 gigawatts (GW) of new utility-scale electric-generating capacity to be added to the U.S. power grid in 2025 in our latest Preliminary Monthly Electric Generator ...

### How Do Wind Turbines Work?

The terms "wind energy" and "wind power" both describe the process by which the wind is used to generate mechanical power or electricity. This mechanical ...



### Configuration and operation model for integrated energy power ...

Furthermore, simulation is done to obtain the optimal configuration for integrated wind-PV-storage power stations. The results indicate that considering the lifespan loss of ...



### Optimal Joint Operation between Wind Power Plants and Pumped Storage

China is in a critical period of energy sector low-carbon transformation, with renewable energy based generation such as wind generation as the



representative of this transformation, the ...



### Optimal site selection for wind-solar-hydrogen storage power ...

Building an economical and efficient WSHEP (Solar solar Hydrogen Energy storage power plant) is a key measure to effectively use clean energy such as wind and solar ...



### Configuration and operation model for integrated energy power station

This article first analyses the costs and benefits of integrated wind-PV-storage power stations. Considering the lifespan loss of energy storage, a two-stage model for the ...



### Pumped-storage renovation for grid-scale, long-duration energy storage

Grid-scale, long-duration energy storage has been widely recognized as an important means to address the intermittency of wind and solar power. This Comment explores ...





### Cost of electricity by source

The calculations also assist governments in making decisions regarding energy policy. On average the levelized cost of electricity from utility scale solar power ...



### [Mobile Wind Power Station: Portable Clean Energy](#)

A mobile wind power station typically comprises a wind turbine, tower, controller, inverter, and energy storage equipment. The wind turbine harnesses wind energy to ...

### Control strategy to smooth wind power output using battery energy

Within the variety of energy storage systems available, the battery energy storage system (BESS) is the most utilized to smooth wind power output. However, the capacity of ...



### Wind Turbine Power Generation and Energy Storage: The ...

Imagine this: A wind turbine spinning gracefully on a breezy hill--poetic, right? But what happens when the wind stops? That's where energy storage swoops in like a superhero. Together, wind ...



### Storage of wind power energy: main facts and feasibility - ...

It is recommended that detailed calculations be made of available energy and the excess power amount to be stored. However, the article discusses the most viable storage ...



### What are the energy storage systems for wind power ...

1. Energy storage systems for wind power stations play a vital role in ensuring stability and reliability.
2. These systems help mitigate the ...

### Pumped-storage hydroelectricity

Pumped-storage hydroelectricity (PSH), or pumped hydroelectric energy storage (PHES), is a type of hydroelectric energy storage used by electric power systems for load balancing. A PSH ...





### [China's Largest Grid-Forming Energy Storage Station...](#)

This marks the completion and operation of the largest grid-forming energy storage station in China. The photo shows the energy storage station supporting the Ningdong ...

### [Battery Energy Storage Station \(BESS\)-Based Smoothing ...](#)

The battery energy storage station (BESS) is the current and typical means of smoothing wind- or solar-power generation fluctuations. Such BESS-based hybrid power ...

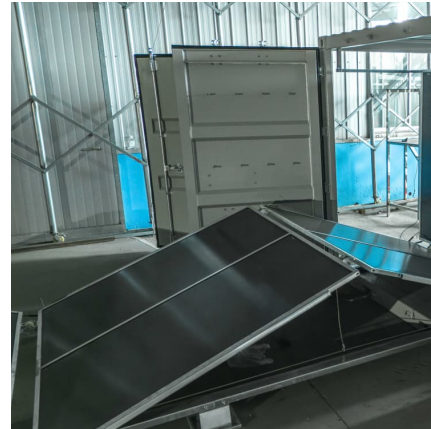


### [Bidding Strategy of Virtual Power Plant with Energy ...](#)

In this context, this paper studies the bidding strategy of the virtual power plant with photovoltaic and wind power. Assuming that the upper ...

## **Wind Power Station**

2.1.2 Structure of Power-Generating Energy and Utilization of Non-fossil Energy In 2015 China's installed capacities for nuclear power, hydropower (including pumped-storage power stations), ...



### The future of wind energy: Efficient energy storage for ...

Since wind conditions are not constant, it is crucial to develop hybrid power plants that combine wind energy with storage systems. These ...



### A review of energy storage technologies for wind power applications

Energy Storage Systems (ESSs) may play an important role in wind power applications by controlling wind power plant output and providing ancillary services to the ...



### Optimal Configuration of Wind-PV and Energy ...

The installed capacity of energy storage in China has increased dramatically due to the national power system reform and the integration of ...





### Construction of pumped storage power stations among cascade ...

For insufficient flexible regulating power supply in the hybrid power generation system (HPGS), the construction of the pumped storage power station for hydro-wind ...

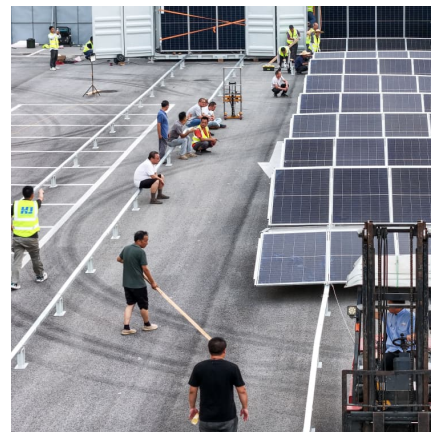


### What are wind energy storage power stations?

Energy storage plays a pivotal role in wind power by addressing the inherent variability of wind energy generation. Due to the fluctuating nature ...

### Power control of an autonomous wind energy conversion system ...

The intermittent characteristics of wind energy make it essential to incorporate energy storage solutions to guarantee a consistent power supply.



### Dynamic regulation reliability of a pumped-storage power generating

To ensure the safety and stability of the integrated power generation system during the transient process, evaluating the dynamic performance indicators of the pumped ...



### **WINDEXchange: What Is Wind Power?**

This requires certain technologies, such as a generator that sits at the top of a tower, behind the blades, in the head (nacelle) of a wind turbine. This aerial view shows how a group of wind ...



### [What is a wind and solar energy storage power station?](#)

A wind and solar energy storage power station is a facility that combines the generation of renewable energy from wind and solar sources with advanced storage ...



### **Optimal allocation method of energy storage for integrated ...**

A wind-solar-storage integrated generation plant would solve the aforementioned problems. The integrated renewable generation plant comprises three units: wind power ...

### **Capacity configuration and economic**



### **analysis of integrated wind...**

A case study was conducted on a 450 MW system in Xinjiang, China. The effects of heat storage capacity, capacity ratio of wind power and photovoltaic to molten salt parabolic ...

## **Contact Us**

---

For catalog requests, pricing, or partnerships, please visit:  
<https://www.conrad.edu.pl>