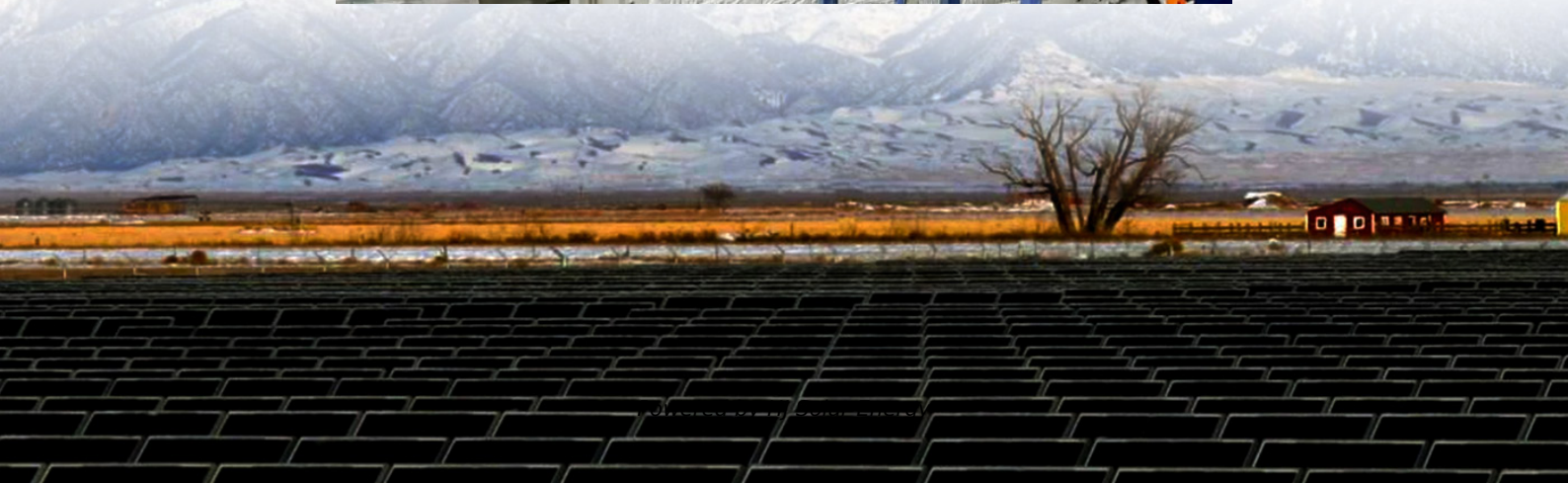


Working principle of superconducting energy storage device





Overview

Superconducting magnetic energy storage (SMES) systems store energy in the magnetic field created by the flow of direct current in a superconducting coil that has been cryogenically cooled to a temperature below its superconducting critical temperature. This use of superconducting coils to store magnetic.

There are several reasons for using superconducting magnetic energy storage instead of other energy storage methods. The most important advantage of SMES is that the time delay during charge and discharge is quite short.

There are several small SMES units available for use and several larger test bed projects. Several 1 MW·h units are used for control in installations around the world, especially to provide power quality at manufacturing plants requiring ultra.

Besides the properties of the wire, the configuration of the coil itself is an important issue from a aspect. There are three factors that affect the.

Under steady state conditions and in the superconducting state, the coil resistance is negligible. However, the refrigerator necessary to keep the superconductor cool requires electric.

A SMES system typically consists of four partsSuperconducting magnet and supporting structureThis system includes the.

As a consequence of , any loop of wire that generates a changing magnetic field in time, also generates an . This process takes energy out of the wire through the (EMF). EMF is defined as electromagnetic work.

Whether HTSC or LTSC systems are more economical depends because there are other major components determining the cost of SMES: Conductor consisting of superconductor and.

Superconducting energy storage systems utilize superconducting magnets to convert electrical energy into electromagnetic energy for storage once charged via the converter from the grid, magnetic fields form within each coil that is then utilized by superconductors as magnets and.



Superconducting energy storage systems utilize superconducting magnets to convert electrical energy into electromagnetic energy for storage once charged via the converter from the grid, magnetic fields form within each coil that is then utilized by superconductors as magnets and.

Superconducting magnetic energy storage (SMES) systems store energy in the magnetic field created by the flow of direct current in a superconducting coil that has been cryogenically cooled to a temperature below its superconducting critical temperature. This use of superconducting coils to store.

In this paper, we will deeply explore the working principle of superconducting magnetic energy storage, advantages and disadvantages, practical application scenarios and future development prospects. Superconducting magnetic energy storage technology converts electrical energy into magnetic field.

Superconducting Magnetic Energy Storage (SMES) is an innovative system that employs superconducting coils to store electrical energy directly as electromagnetic energy, which can then be released back into the grid or other loads as needed. Here, we explore its working principles, advantages and.

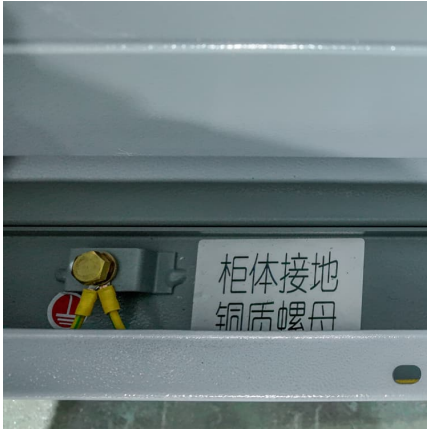
SMES is an advanced energy storage technology that, at the highest level, stores energy similarly to a battery. External power charges the SMES system where it will be stored; when needed, that same power can be discharged and used externally. However, SMES systems store electrical energy in the.

The superconducting magnetic energy storage system is a kind of power facility that uses superconducting coils to store electromagnetic energy directly, and then returns electromagnetic energy to the power grid or other loads when needed. In this article, we will introduce superconducting magnetic.

The operating principle of SMES is quite simple: it is a device for efficiently storing energy in the magnetic field associated with a circulating current. An inverter/converter is toroidal magnet. Upon discharge, energy is withdrawn from the magnet and converted to AC power. Figure 21.1 is a.



Working principle of superconducting energy storage device

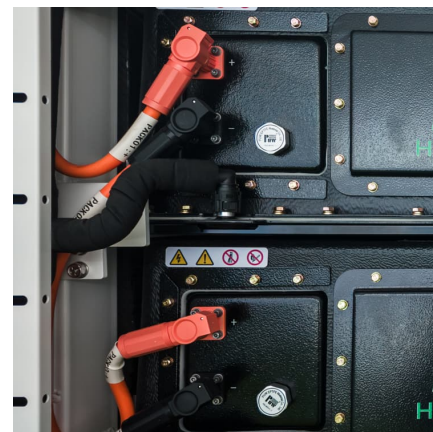


Energy Storage Method: Superconducting Magnetic Energy ...

ABSTRACT Magnetic Energy Storage (SMES) is a highly efficient technology for storing power in a magnetic field created by the flow of direct current through a superconducting coil. SMES has ...

Recent trends in supercapacitor-battery hybrid energy storage devices

Recent trends in use of porous and graphene-based carbon electrode materials in hybrid energy storage devices are critically reviewed.



Superconducting energy storage principle

Superconducting magnetic energy storage (SMES) is a device that utilizes magnets made of superconducting The superconducting magnetic energy storage system is a kind of power ...

Superconducting Devices: Principles, Types, and Applications

14 ????· Explore superconducting devices, their principles, types, and applications in electronics, quantum computing, power systems, and



medical technology.



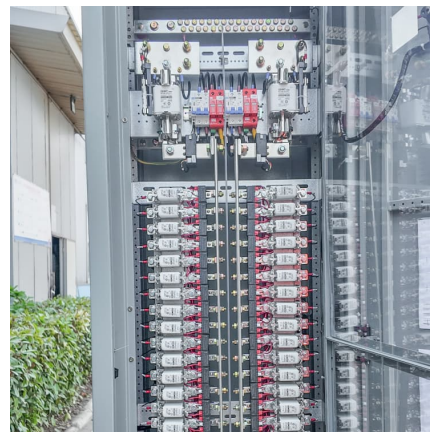
Application of superconducting magnetic energy storage in ...

Superconducting magnetic energy storage (SMES) is known to be an excellent high-efficient energy storage device. This article is focussed on various potential applications of ...



Supercapacitors for energy storage applications: Materials, devices ...

The integrated energy storage device must be instantly recharged with an external power source in order for wearable electronics and continuous health tracking devices ...



[working principle of superconducting energy storage](#)

A superconducting magnetic energy storage with dual functions of active filtering and power fluctuation suppression for photovoltaic microgrid. The working principle of SAPF can be ...





[Superconducting Magnetic Energy Storage \(SMES\) System](#)

This paper presents Superconducting Magnetic Energy Storage (SMES) System, which can storage, bulk amount of electrical power in superconducting coil.

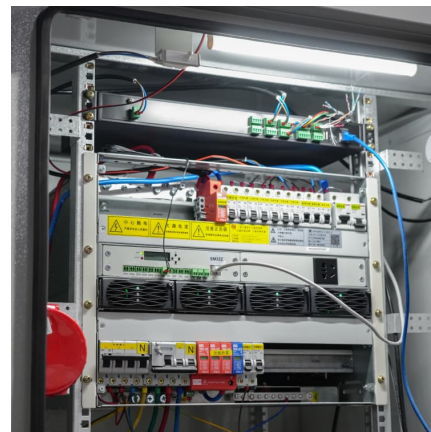


[A STUDY OF WORKING PRINCIPLES OF HIGH ...](#)

s that energy storage devices will be the only feasible and prompt resolution for both scenarios. Superconducting Magnetic Energy Storage (SMES) systems have been identified as ...

[Fundamentals of superconducting magnetic energy ...](#)

Superconducting magnetic energy storage (SMES) systems use superconducting coils to efficiently store energy in a magnetic field generated ...



Working principle of superconducting energy storage system

What is magnetic energy storage in a short-circuited superconducting coil? An illustration of magnetic energy storage in a short-circuited superconducting coil (Reference: ...



working principle of superconducting magnetic energy storage device

Abstract -- The SMES (Superconducting Magnetic Energy Storage) is one of the very few direct electric energy storage systems. Its energy density is limited by mechanical considerations to a ...



[Application of superconducting magnetic energy](#)

Superconducting magnetic energy storage (SMES) is known to be an excellent high-efficient energy storage device. This article is focused on ...

[Working principle of new energy storage coil](#)

Moreover, the power converter acts as a connection between the stored energy and the alternating current in the national electricity grid. Controller. The controller provides a ...





Superconducting Magnetic Energy Storage

The operating principle of SMES is quite simple: it is a device for efficiently storing energy in the magnetic field associated with a circulating current. An inverter/convertor is used to transform ...

Microsoft Word

Abstract -- The SMES (Superconducting Magnetic Energy Storage) is one of the very few direct electric energy storage systems. Its energy density is limited by mechanical considerations to a ...



Superconducting Magnetic Energy Storage (SMES) Systems

Abstract Superconducting magnetic energy storage (SMES) systems can store energy in a magnetic field created by a continuous current flowing through a superconducting ...

superconducting magnetic energy storage system , in hindi

3) Playlist Energy Storage System: o Energy Storage System ABOUT THIS TOPIC in this video I have explained about superconducting magnetic energy storage system that is a technology of ...



working principle of superconducting energy storage technology

Superconducting magnetic energy storage (SMES) is known to be an excellent high-efficient energy storage device. This article is focussed on various potential applications of the SMES ...



[Superconducting magnetic energy storage-definition, ...](#)

In this article, we will introduce superconducting magnetic energy storage from various aspects including working principle, pros and cons, application ...



Working principle of superconducting coil energy storage

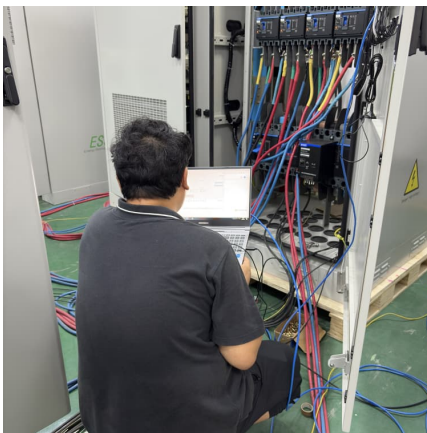
The framework diagram of the SMES system and its working principle. 3. Some practical countermeasures to improve the energy storage density A fact is that the superconducting ...





Describe the working principle of superconducting energy storage device

Superconducting magnetic energy storage (SMES) systems deposit energy in the magnetic field produced by the direct current flow in a superconducting coil, which has been cryogenically ...



MALLA REDDY COLLEGE OF ENGINEERING

analysis of thermal energy storage, Electrical Energy storage-super-capacitors, Magnetic Energy storage Superconducting systems, Mechanical-Pumped hydro, flywheels and pressurized air ...

Progress in Superconducting Materials for Powerful Energy Storage

This chapter of the book reviews the progression in superconducting magnetic storage energy and covers all core concepts of SMES, including its working concept, design ...



Superconducting Magnetic Energy Storage: Principles and ...

Superconducting Magnetic Energy Storage (SMES) is an innovative system that employs superconducting coils to store electrical energy directly as electromagnetic ...



Superconducting magnetic energy storage systems: Prospects ...

The review of superconducting magnetic energy storage system for renewable energy applications has been carried out in this work. SMES system components are identified ...



[How Superconducting Magnetic Energy Storage \(SMES\) Works](#)

How does a Superconducting Magnetic Energy Storage system work? SMES technology relies on the principles of superconductivity and electromagnetic induction to ...

[Energy Storage Systems: Supercapacitors](#)

Explore the potential of supercapacitors in energy storage systems, offering rapid charge/discharge, high power density, and long cycle life for various applications.





Contact Us

For catalog requests, pricing, or partnerships, please visit:
<https://www.conrad.edu.pl>